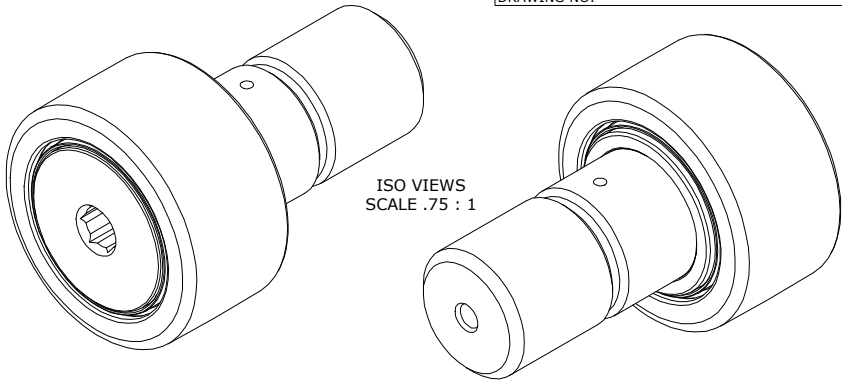


LOAD RATINGS		
RATING	lbf	Newtons
RADIAL BASIC DYNAMIC	6,385	28,402
MAXIMUM STATIC CAPACITY	15,840	70,460

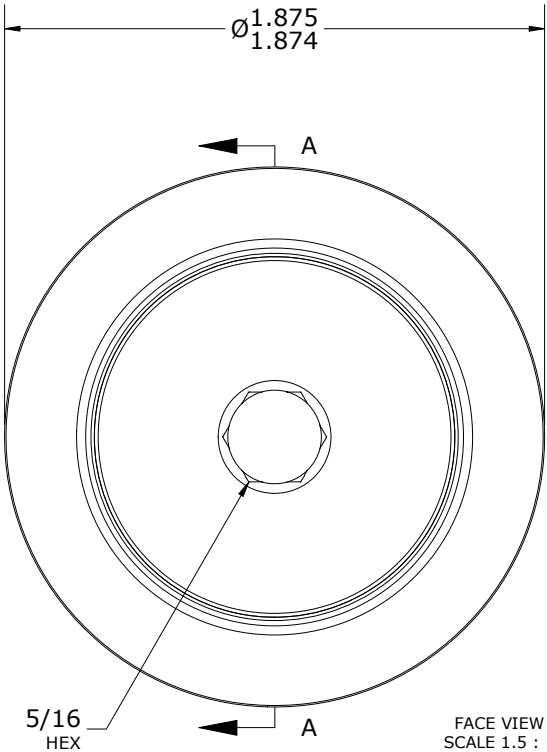
RECOMMENDED MOUNTING HOLE Ø		
Limit	Inch	mm
MIN	1.0000	25.4000
MAX	1.0005	25.4127

MAXIMUM CLAMPING TORQUE**		
Thread Type	Inch lbf	Nm
LUBRICATED	1,125	127

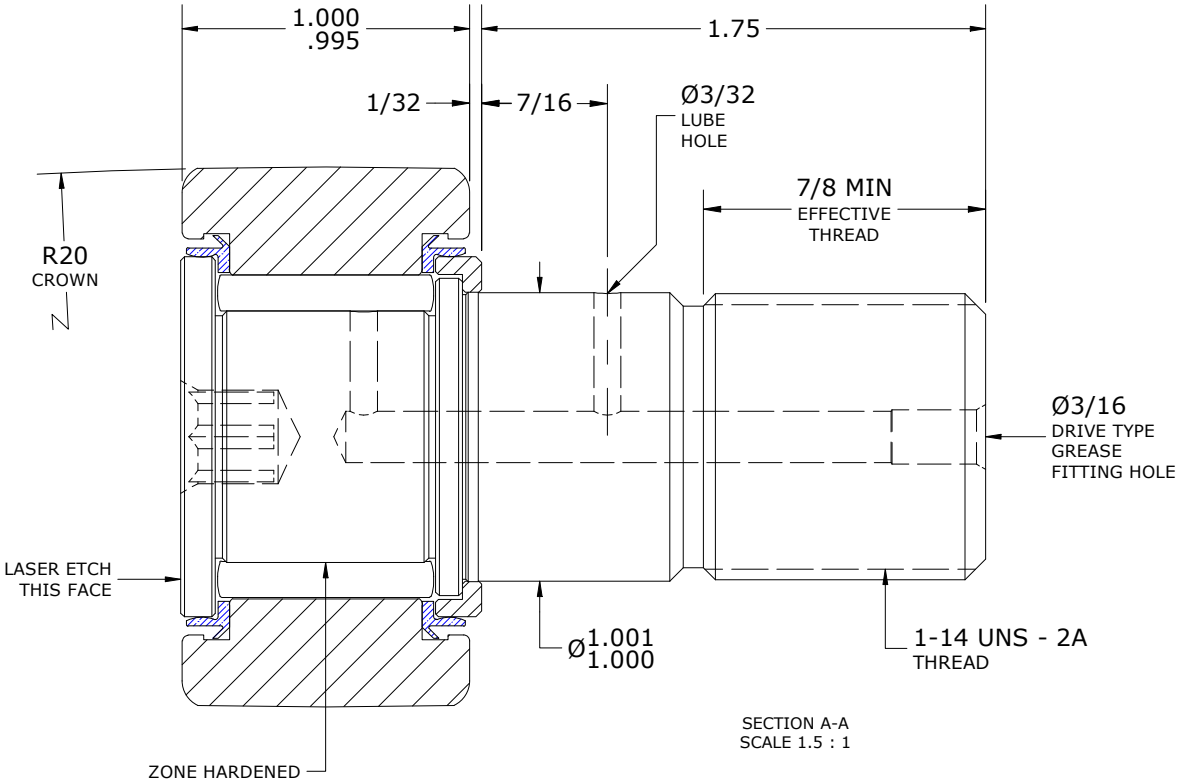
- NOTES:
1. BEARING IS PACKED WITH NLGI GRADE 2, LITHIUM BASED GREASE (UNLESS OTHERWISE SPECIFIED)
 2. ALL EXPOSED STEEL SURFACES HAVE BLACK OXIDE
 3. CUSTOM LASER ETCHING AVAILABLE UPON REQUEST
 4. LIMITING SPEED:
 - A. GREASE = 2,000 RPM



ISO VIEWS
SCALE .75 : 1



FACE VIEW
SCALE 1.5 : 1



SECTION A-A
SCALE 1.5 : 1

**(TORQUE SPECIFICATION IS BASED ON LUBRICATED THREADS, IF USING DRY THREADS DOUBLE TORQUE VALUE)

MATERIAL NOTES: OUTER RING - BEARING STEEL, HEAT TREATED STUD - BEARING STEEL, ZONE HARDENED NEEDLE ROLLER(S) - BEARING STEEL, HEAT TREATED WASHER - BEARING STEEL, HEAT TREATED SEAL(S) - SYNTHETIC	CUSTOMER PART#	XX = ± .01 XXX = ± .005 XXXX = ± .0005 ANGLES = ± 2° INCH [METRIC] FRACTION = ± 1/64	CARTER MANUFACTURING IS NOT RESPONSIBLE FOR TYPOGRAPHICAL ERRORS		CARTER MANUFACTURING CO., INC. GRAND HAVEN, MICHIGAN 49417			
	ENGINEERING CHANGE ORDER NOTE		REVISION		PART NAME: ASSEMBLY		PRODUCT TYPE: Standard HD	
			D	AUTHOR BY HG	DRAWN BY JAF	CHK'D BY MD	SALES NC	MATERIAL NOTED
			REVISION BY DJB	DATE 11/6/2023	DATE 7/13/2006	DATE 11/6/2023	DATE 11/6/2023	SHEET 1 OF 2
	CARTER STANDARD SURFACE FINISH IS MEASURED IN "Ra" UNITS UNLESS OTHERWISE SPECIFIED.							