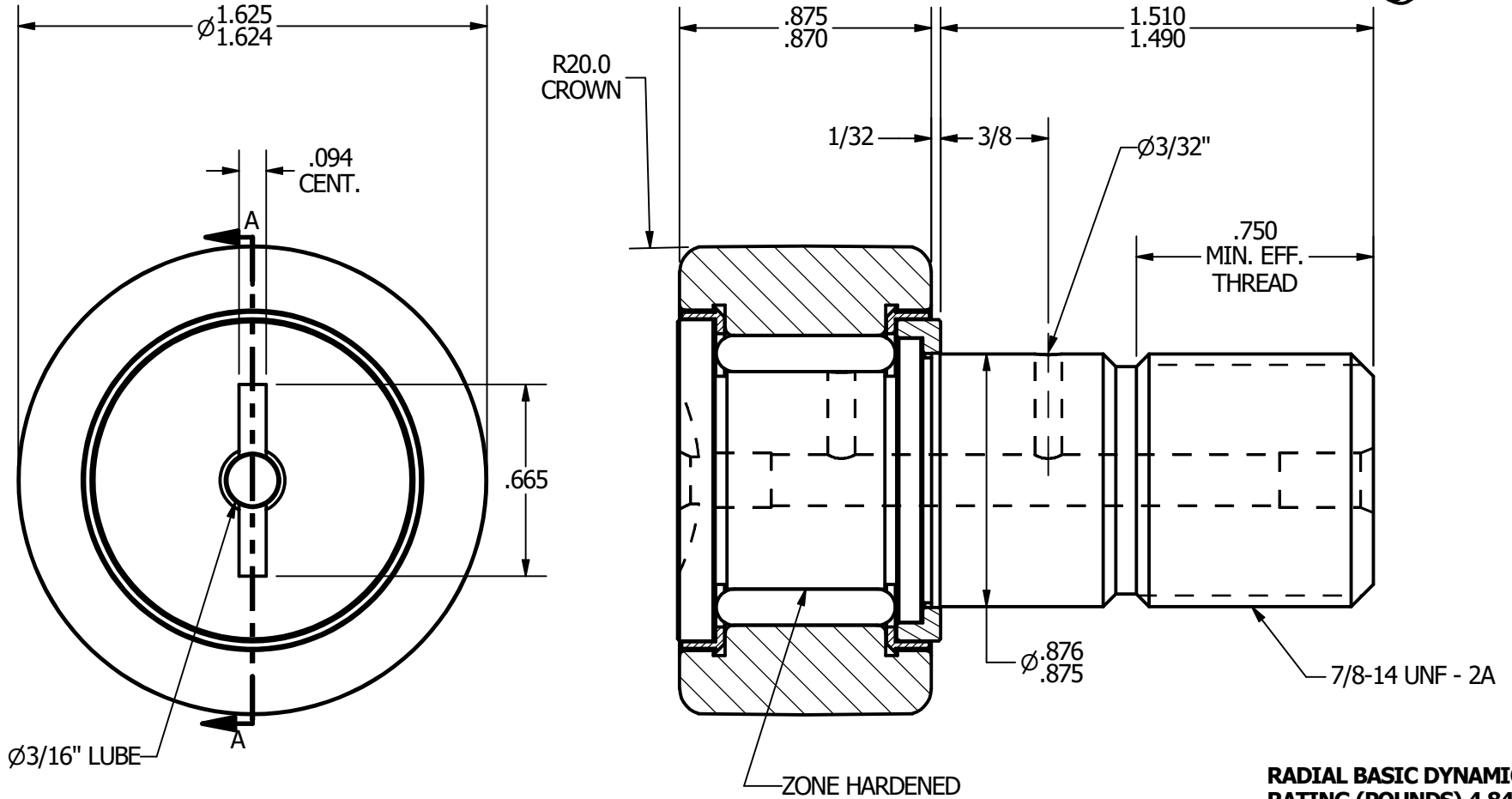
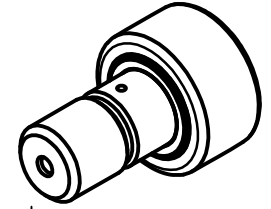


- NOTES:**
 1. BEARING IS PACKED WITH GREASE
 2. ALL EXPOSED SURFACES ARE BLACK OXIDED



RADIAL BASIC DYNAMIC RATING (POUNDS) 4,840

MAXIMUM STATIC CAPACITY (POUNDS) 11,280

MATERIAL NOTES:

- OUTER - BEARING STEEL, HEAT TREATED
- STUD - BEARING STEEL, ZONE HARDENED
- ROLLER - BEARING STEEL, HEAT TREATED
- WASHER - COLD ROLLED STEEL, HEAT TREATED
- SEAL - SYNTHETIC

CUSTOMER PART#

.XX = $\pm .01$
 .XXX = $\pm .005$
 .XXXX = $\pm .0005$
 ANGLES = ± 1
 INCH [METRIC]

CARTER MANUFACTURING IS NOT RESPONSIBLE FOR TYPOGRAPHICAL ERRORS

CARTER MANUFACTURING CO., INC.

GRAND HAVEN, MICHIGAN 49417

REVISION

PART NAME: Assembly

SHEET 1 OF 2

CHANGE NOTE:

A

REV. BY

JAF

AUTHOR. BY

JGV

DATE

7/14/2006

DRAWN BY

JAF

DATE

7/14/2006

CHK'D BY

JGV

DATE

7/14/2006

SALES

KPR

DATE

7/13/2006

MATERIAL

NOTED

DRAWING NO.

CCNBH-52-S