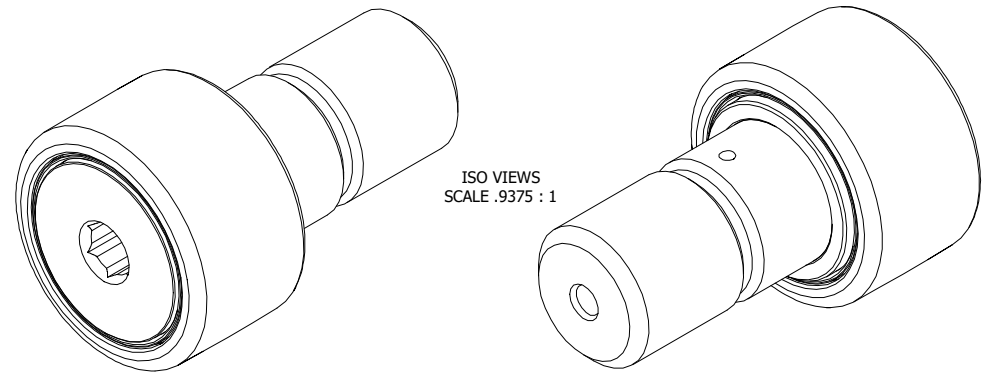
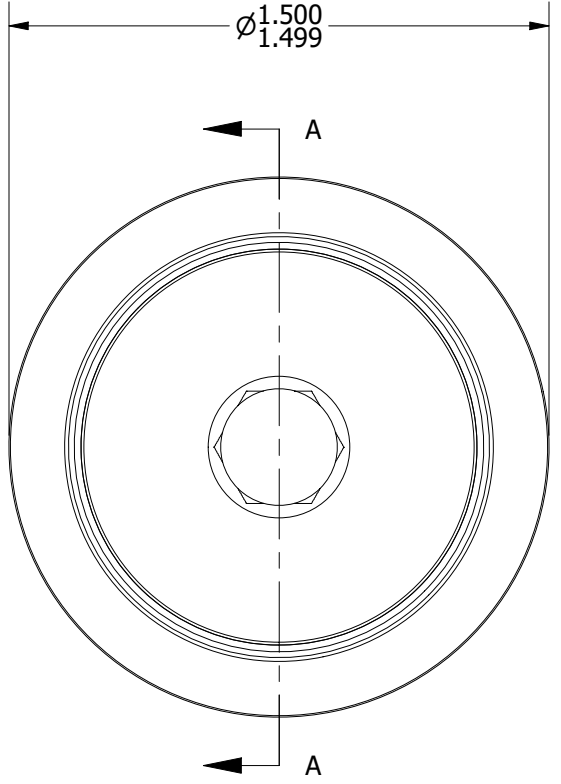


LOAD RATINGS	
RATING	Lbs
RADIAL BASIC DYNAMIC	4,840
MAXIMUM STATIC CAPACITY	11,280

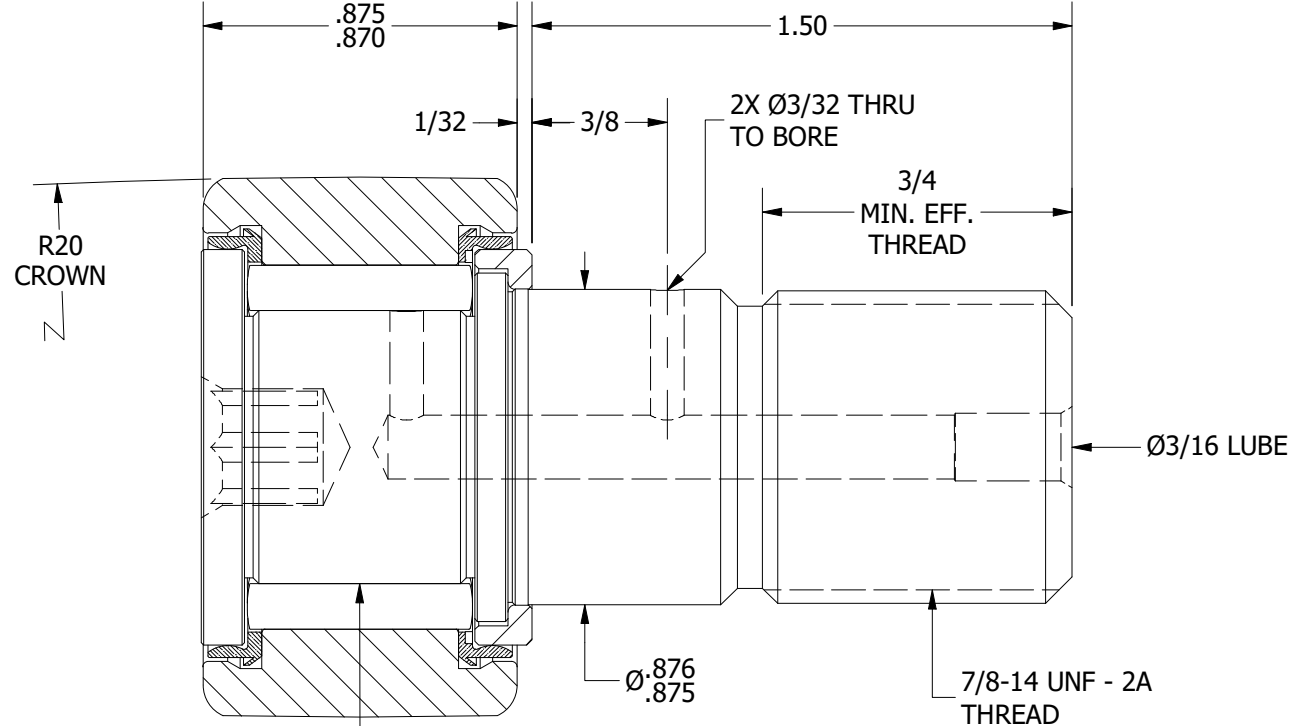
NOTES:  
 1. BEARING IS PACKED WITH LITHIUM BASED #2 WEIGHT GREASE  
 2. ALL EXPOSED SURFACES HAVE BLACK OXIDE



ISO VIEWS  
 SCALE .9375 : 1



BASE VIEW  
 SCALE 1.875 : 1



SECTION A-A  
 SCALE 1.875 : 1

MATERIAL NOTES:  
 OUTER RACE - BEARING STEEL, HEAT TREATED  
 STUD - BEARING STEEL, ZONE HARDENED  
 NEEDLE ROLLERS - BEARING STEEL, HEAT TREATED  
 WASHER - COLD ROLLED STEEL, HEAT TREATED  
 SEALS - SYNTHETIC

CUSTOMER PART#	.XX = ± .01 .XXX = ± .005 .XXXX = ± .0005 ANGLES = ± 1' INCH [METRIC] FRACTION = ± 1/32
CHANGE NOTE:	

CARTER MANUFACTURING IS NOT RESPONSIBLE FOR TYPOGRAPHICAL ERRORS	
REVISION	
<b>C</b>	
REV. BY	DATE
MD	4/4/2013

<b>CARTER MANUFACTURING CO., INC.</b>					
GRAND HAVEN, MICHIGAN 49417					
PART NAME: <b>Assembly</b>			SHEET 1 OF 2		
AUTHOR. BY	DRAWN BY	CHK'D BY	SALES	MATERIAL	
DB	AJH	SGW	KR	NOTED	
REV. BY	DATE	DATE	DATE	DATE	DRAWING NO.
MD	4/4/2013	4/5/2002	4/4/2013	12/9/2010	CCNBH-48-SB