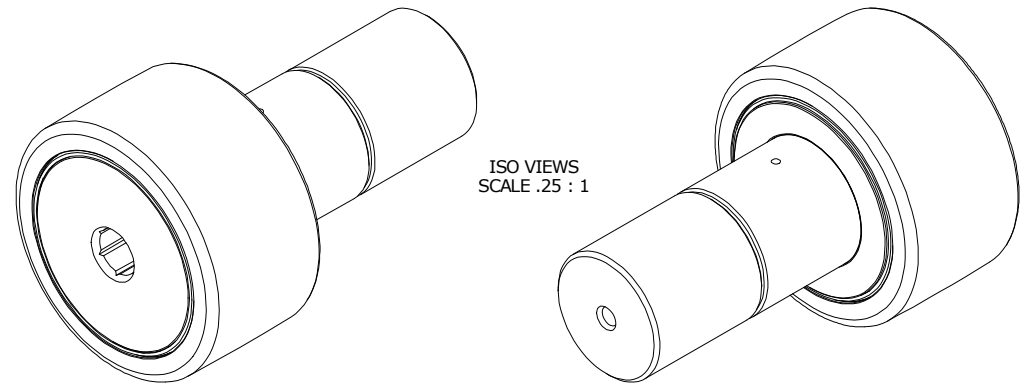
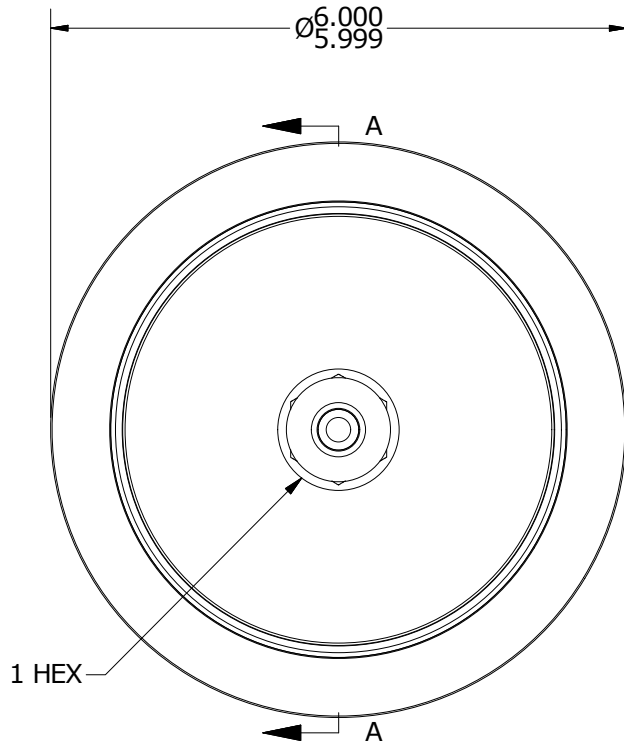


LOAD RATINGS	
RATING	Lbs
RADIAL BASIC DYNAMIC	60,000
MAXIMUM STATIC CAPACITY	160,900

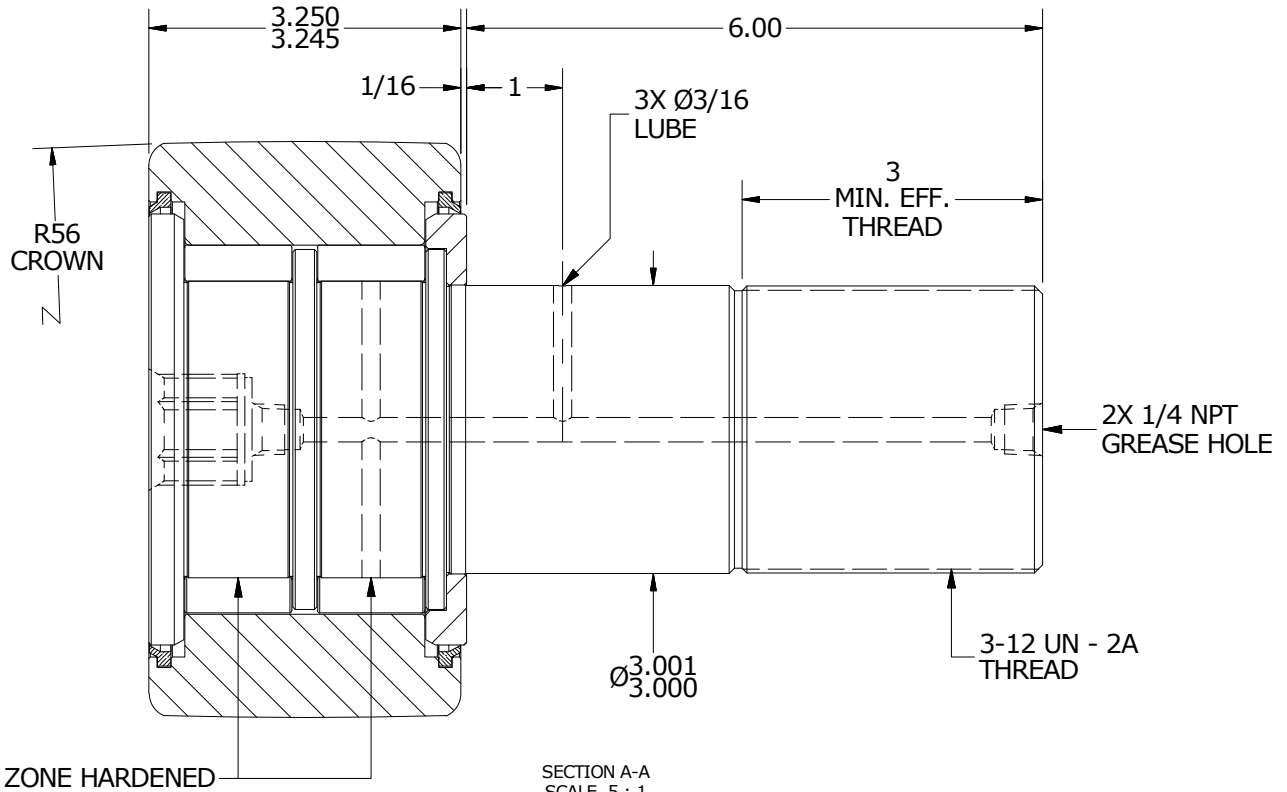
- NOTES:  
 1. BEARING IS PACKED WITH NLGI GRADE 2, LITHIUM BASED GREASE (UNLESS OTHERWISE SPECIFIED)  
 2. ALL EXPOSED SURFACES HAVE BLACK OXIDE



ISO VIEWS  
SCALE .25 : 1



END VIEW  
SCALE .5 : 1



SECTION A-A  
SCALE .5 : 1

MATERIAL NOTES:

- OUTER RACE - BEARING STEEL, HEAT TREATED
- STUD - BEARING STEEL, ZONE HARDENED
- NEEDLE ROLLERS - BEARING STEEL, HEAT TREATED
- WASHER - COLD ROLLED STEEL, HEAT TREATED
- SEALS - SYNTHETIC

CUSTOMER PART#  
 XX = ± .01  
 XXX = ± .005  
 XXXX = ± .0005  
 ANGLES = ± 1'  
 INCH [METRIC]  
 FRACTION = ± 1/32

CARTER MANUFACTURING IS NOT RESPONSIBLE FOR TYPOGRAPHICAL ERRORS

**CARTER MANUFACTURING CO., INC.**  
 GRAND HAVEN, MICHIGAN 49417

ENGINEERING CHANGE ORDER NOTE

REVISION

PART NAME: ASSEMBLY

<b>C</b>	AUTHOR BY	DRAWN BY	CHK'D BY	SALES	MATERIAL
	HG	EMD	SGW	KPR	NOTED
	REVISION BY	DATE	DATE	DATE	SHEET
MD	12/2/2016	7/17/2006	12/2/2016	7/16/2006	1 OF 2