

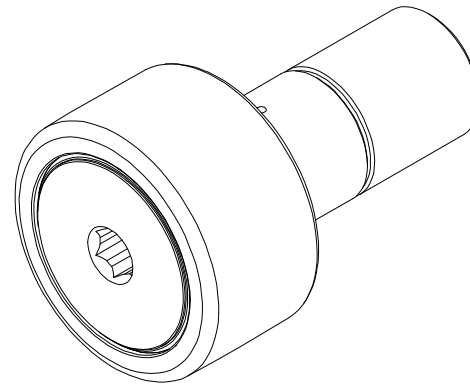
LOAD RATINGS		
RATING	lbf	Newtons
RADIAL BASIC DYNAMIC	46,575	207,176
MAXIMUM STATIC CAPACITY	67,950	302,257

MS NO. _____ NSN NO. _____ DRAWING NO. CCNBH-160-SB

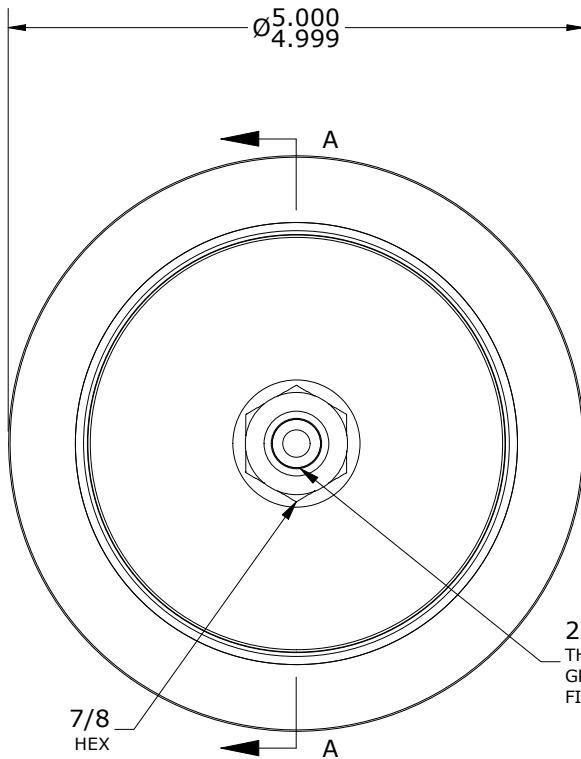
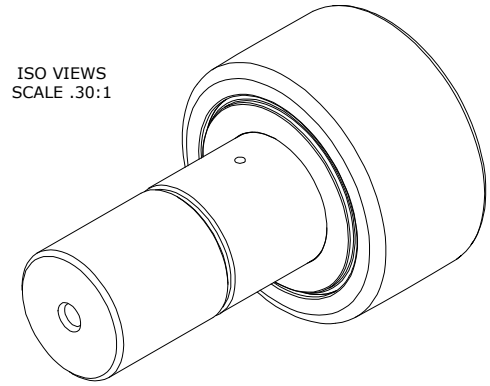
RECOMMENDED MOUNTING HOLE Ø		
Limit	Inch	mm
MIN	2.5000	63.5000
MAX	2.5005	63.5127

- NOTES:
- BEARING IS PACKED WITH NLGI GRADE 2, LITHIUM BASED GREASE (UNLESS OTHERWISE SPECIFIED)
 - ALL EXPOSED STEEL SURFACES HAVE BLACK OXIDE
 - CUSTOM LASER ETCHING UPON REQUEST
 - LIMITING SPEED:
 - A. GREASE = 575 RPM

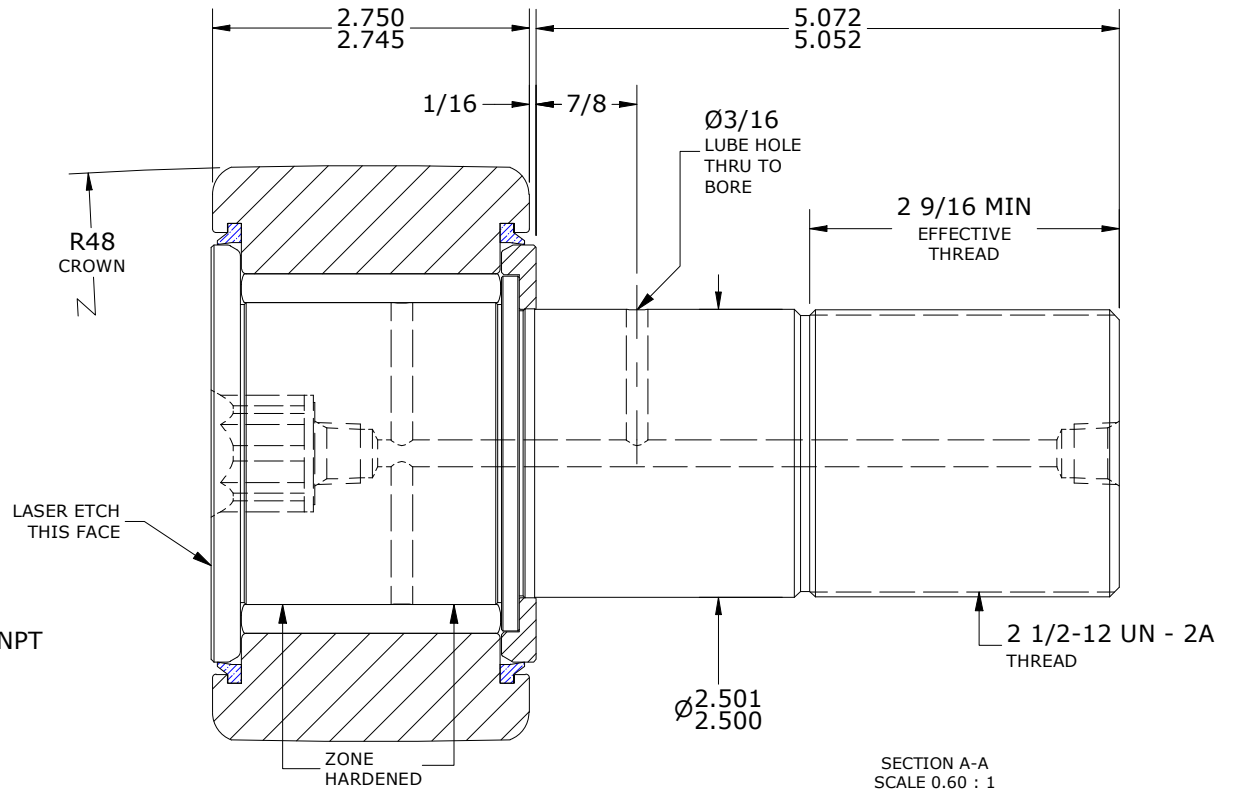
MAXIMUM CLAMPING TORQUE**		
Thread Type	Inch Lbs	Nm
LUBRICATED	5,000	565



ISO VIEWS
SCALE .30:1



HEAD: END VIEW
SCALE 0.60 : 1



SECTION A-A
SCALE 0.60 : 1

**TORQUE SPECIFICATION IS BASED ON LUBRICATED THREADS, IF USING DRY THREADS DOUBLE TORQUE VALUE

MATERIAL NOTES:

- OUTER RING - BEARING STEEL, HEAT TREATED
- STUD - BEARING STEEL, ZONE HARDENED
- NEEDLE ROLLER(S) - BEARING STEEL, HEAT TREATED
- WASHER - STEEL, HEAT TREATED
- SEAL(S) - SYNTHETIC

CUSTOMER PART#

XX = ± .01
XXX = ± .005
XXXX = ± .0005
ANGLES = ± 1'
INCH [METRIC]
FRACTION = ± 1/32

CARTER MANUFACTURING IS NOT RESPONSIBLE FOR TYPOGRAPHICAL ERRORS

CARTER MANUFACTURING CO., INC.
GRAND HAVEN, MICHIGAN 49417

ENGINEERING CHANGE ORDER NOTE

REVISION

PART NAME: ASSEMBLY

PRODUCT TYPE: CNB

D

AUTHOR BY

DRAWN BY

CHK'D BY

SALES

MATERIAL

HG

GJP

MD

NC

NOTED

REVISION BY

DATE

DATE

DATE

DATE

SHEET

SGW

1/28/2022

8/16/2000

1/28/2022

7/22/2020

1 OF 2