

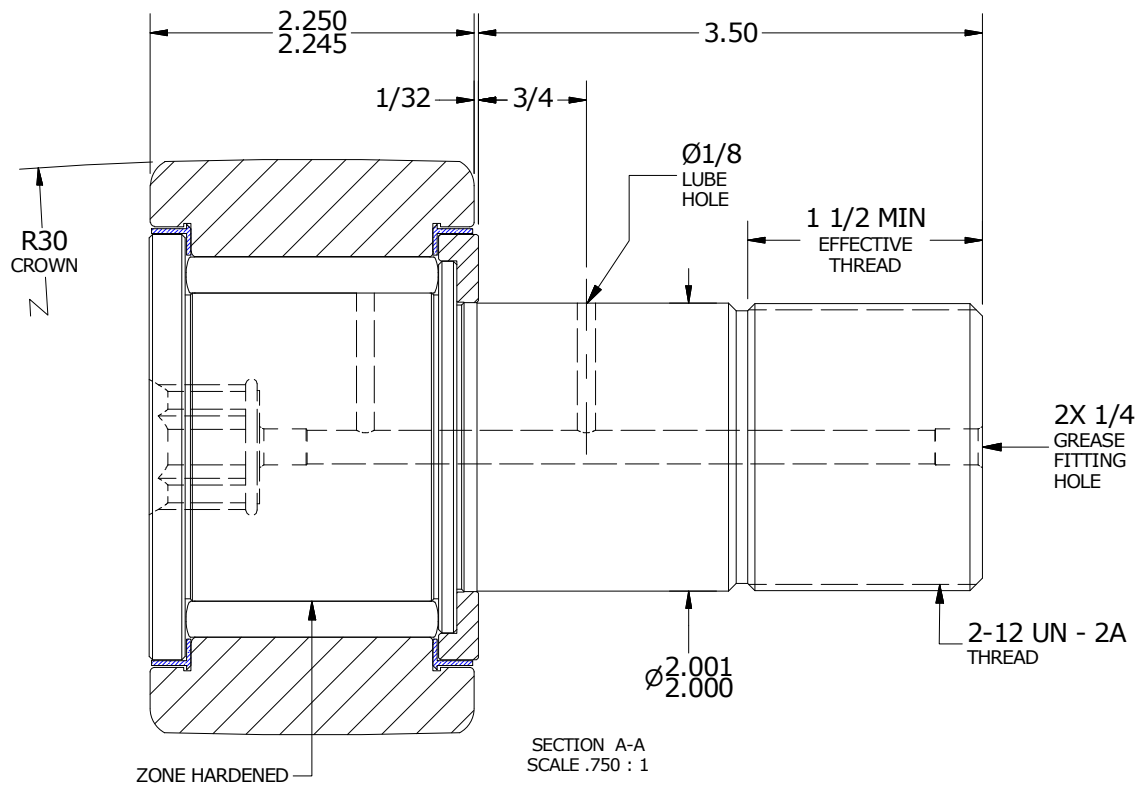
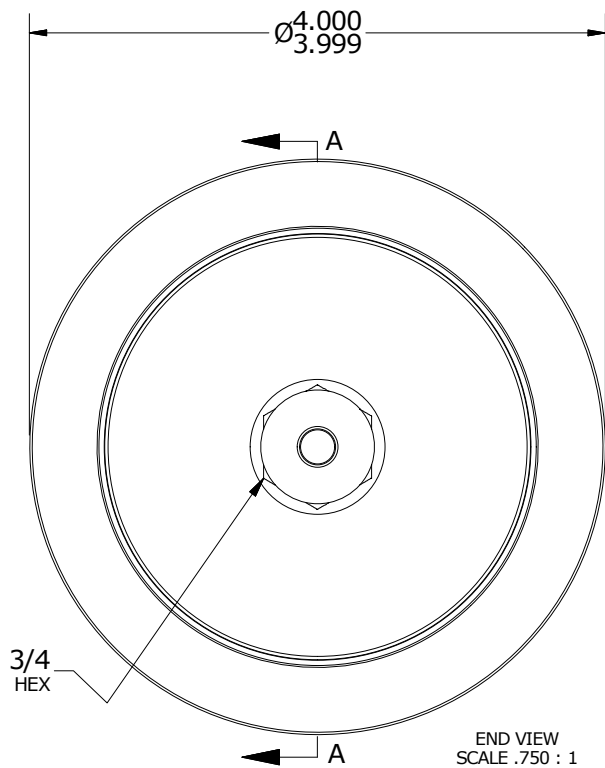
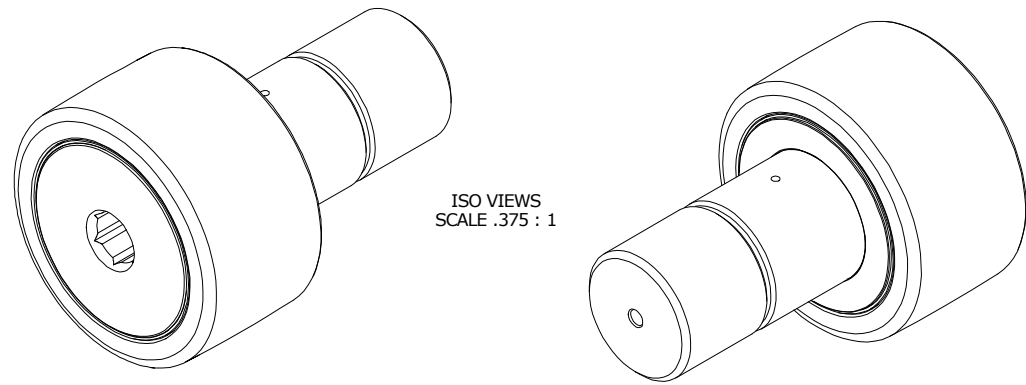
LOAD RATINGS		
RATING	lbf	Newtons
RADIAL BASIC DYNAMIC	29,985	133,380
MAXIMUM STATIC CAPACITY	89,540	398,294

RECOMMENDED MOUNTING HOLE Ø		
Limit	Inch	mm
MIN	2.0000	50.8000
MAX	2.0005	50.8127

MAXIMUM CLAMPING TORQUE		
Thread Type	Inch Lbs	Nm
DRY	5,000	565
LUBRICATED	2,500	282.5

NOTES:

1. BEARING IS PACKED WITH NLGI GRADE 2, LITHIUM BASED GREASE (UNLESS OTHERWISE SPECIFIED)
2. ALL EXPOSED SURFACES HAVE BLACK OXIDE
3. LIMITING SPEED:
A. GREASE = 700



MATERIAL NOTES:

OUTER RING - BEARING STEEL, HEAT TREATED
 STUD - BEARING STEEL, ZONE HARDENED
 NEEDLE ROLLER(S) - BEARING STEEL, HEAT TREATED
 WASHER - BEARING STEEL, HEAT TREATED
 SEAL(S) - SYNTHETIC

CUSTOMER PART#

XX = ± .01
 XXX = ± .005
 XXXX = ± .0005
 ANGLES = ± 1'
 INCH [METRIC]
 FRACTION = ± 1/32

CARTER MANUFACTURING IS NOT RESPONSIBLE FOR TYPOGRAPHICAL ERRORS

CARTER MANUFACTURING CO., INC.

GRAND HAVEN, MICHIGAN 49417

ENGINEERING CHANGE ORDER NOTE

REVISION

PART NAME: ASSEMBLY

PRODUCT TYPE: CNB

A

AUTHOR BY

DRAWN BY

CHK'D BY

SALES

MATERIAL

BMC

GJP

BMC

KPR

NOTED

REVISION BY

DATE

DATE

DATE

DATE

SHEET

SGW

10/5/2000

8/15/2000

10/5/2000

10/5/2000

1 OF 2