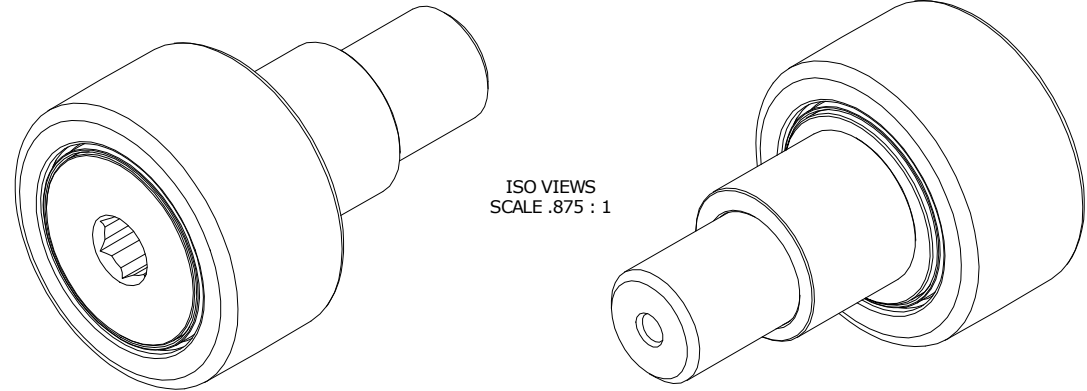


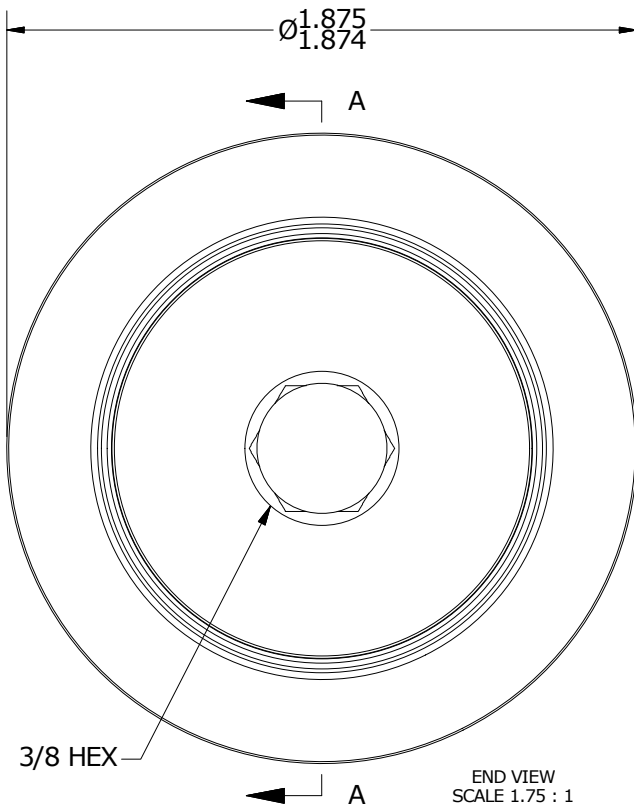
LOAD RATINGS	
RATING	Lbs
RADIAL BASIC DYNAMIC	6,385
MAXIMUM STATIC CAPACITY	7,920

- NOTES:
 1. BEARING IS PACKED WITH NLGI 2, LITHIUM BASED GREASE
 2. ALL EXPOSED SURFACES HAVE BLACK OXIDE

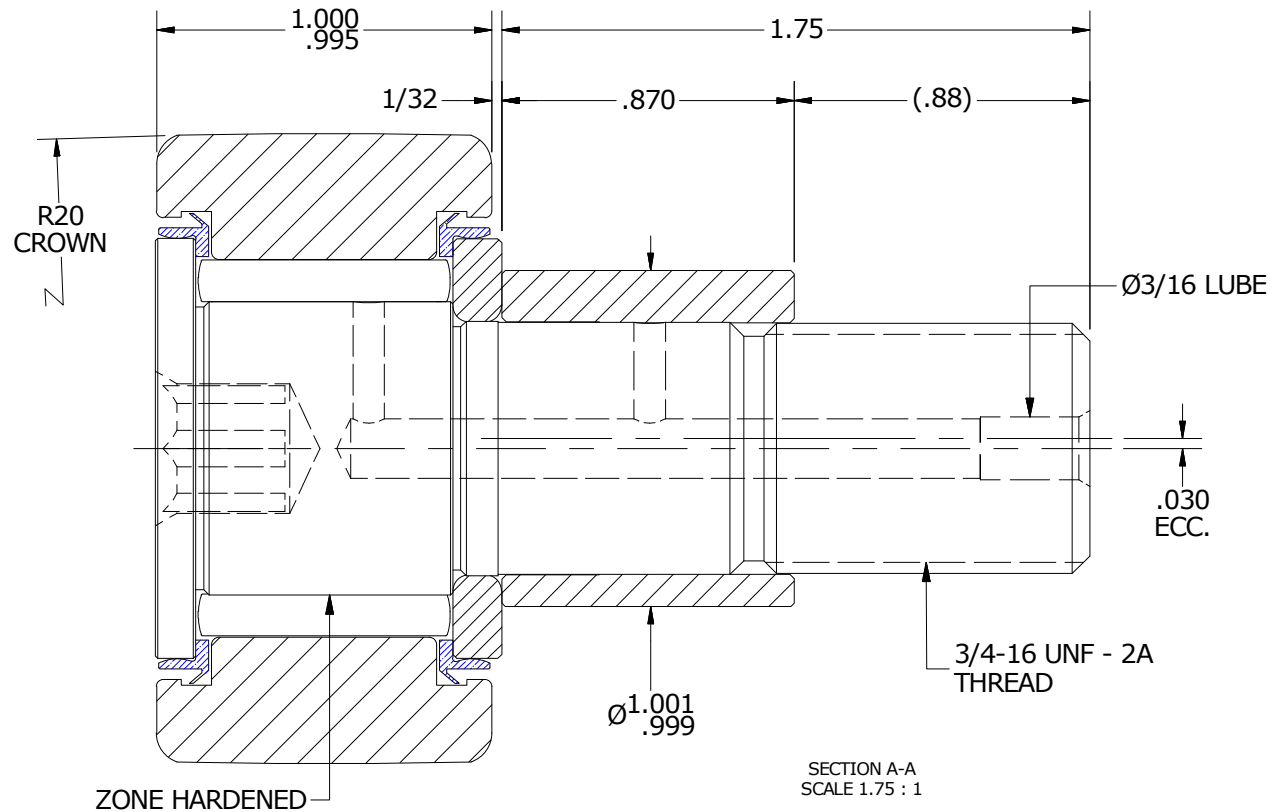
MS NO. _____ NSN NO. _____ DRAWING NO. CCNBE-60-SB



ISO VIEWS
SCALE .875 : 1



END VIEW
SCALE 1.75 : 1



SECTION A-A
SCALE 1.75 : 1

MATERIAL NOTES:

- OUTER RING - BEARING STEEL, HEAT TREATED
- STUD - BEARING STEEL, ZONE HARDENED
- NEEDLE ROLLER(S) - BEARING STEEL, HEAT TREATED
- WASHER - BEARING STEEL, HEAT TREATED
- SEAL(S) - SYNTHETIC
- ECCENTRIC SLEEVE - COLD ROLLED STEEL

CUSTOMER PART# _____
 XX = ± .01
 XXX = ± .005
 XXXX = ± .0005
 ANGLES = ± 1'
 INCH [METRIC]
 FRACTION = ± 1/32

CARTER MANUFACTURING IS NOT RESPONSIBLE FOR TYPOGRAPHICAL ERRORS

CARTER MANUFACTURING CO., INC.
 GRAND HAVEN, MICHIGAN 49417

ENGINEERING CHANGE ORDER NOTE

REVISION		PART NAME: ASSEMBLY			
B	AUTHOR BY HG	DRAWN BY JAF	CHK'D BY MD	SALES KR	MATERIAL NOTED
REVISION BY SGW	DATE 5/19/2017	DATE 7/13/2006	DATE 5/19/2017	DATE 5/19/2017	SHEET 1 OF 2