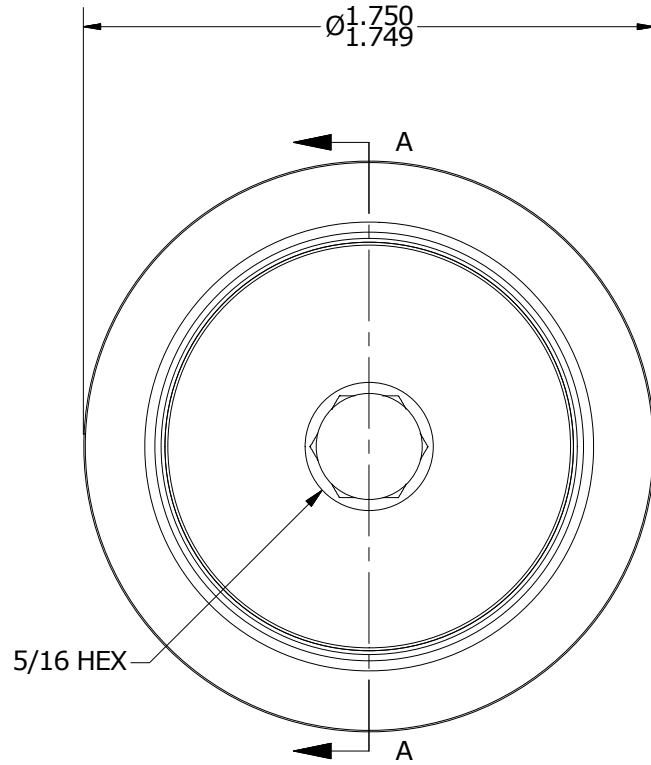
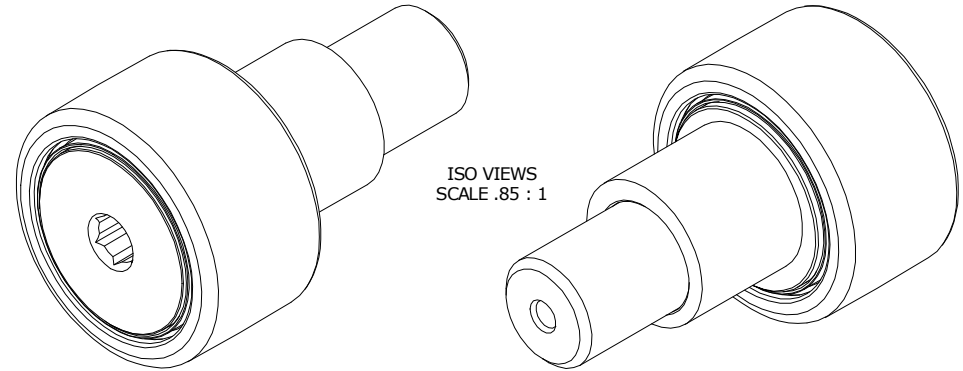


LOAD RATINGS		
RATING	lbf	Newtons
RADIAL BASIC DYNAMIC	6,385	28,402
MAXIMUM STATIC CAPACITY	7,920	35,230

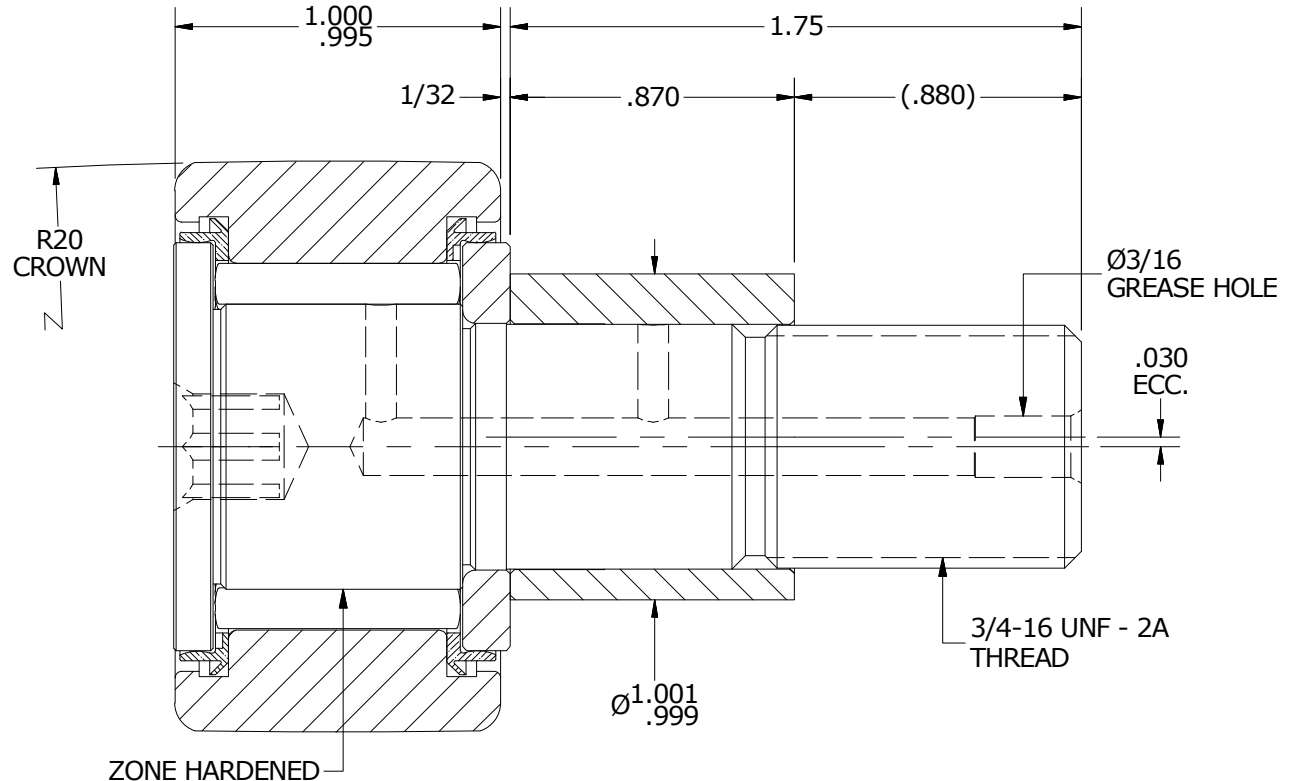
- NOTES:
1. BEARING IS PACKED WITH NLGI GRADE 2, LITHIUM BASED GREASE UNLESS OTHERWISE SPECIFIED
  2. ALL EXPOSED STEEL SURFACES HAVE BLACK OXIDE
  3. LIMITING SPEED:
    - A. GREASE = 2,200 RPM

RECOMMENDED MOUNTING HOLE Ø		
Limit	Inch	mm
MIN	1.002	25.451
MAX	1.004	25.502

MAXIMUM CLAMPING TORQUE		
Thread Type	Inch lbf	Nm
DRY	1,250	141
LUBRICATED	625	70.5



END VIEW  
SCALE 1.7 : 1



SECTION A-A  
SCALE 1.7 : 1

MATERIAL NOTES:

- OUTER RING - BEARING STEEL, HEAT TREATED
- STUD - BEARING STEEL, ZONE HARDENED
- NEEDLE ROLLERS - BEARING STEEL, HEAT TREATED
- WASHER - BEARING STEEL, HEAT TREATED
- ECCENTRIC SLEEVE - STEEL
- SEALS - SYNTHETIC

CUSTOMER PART#

XX = ± .01  
 XXX = ± .005  
 XXXX = ± .0005  
 ANGLES = ± 1'  
 INCH [METRIC]  
 FRACTION = ± 1/32

CARTER MANUFACTURING IS NOT RESPONSIBLE FOR TYPOGRAPHICAL ERRORS

**CARTER MANUFACTURING CO., INC.**

GRAND HAVEN, MICHIGAN 49417

ENGINEERING CHANGE ORDER NOTE

REVISION

PART NAME: ASSEMBLY

PRODUCT TYPE: CCNBE

C

AUTHOR BY

DRAWN BY

CHK'D BY

SALES

MATERIAL

HG

EMD

SGW

KPR

NOTED

REVISION BY

DATE

DATE

DATE

DATE

SHEET

MD

11/5/2018

7/13/2006

11/5/2018

7/12/2006

1 OF 2