

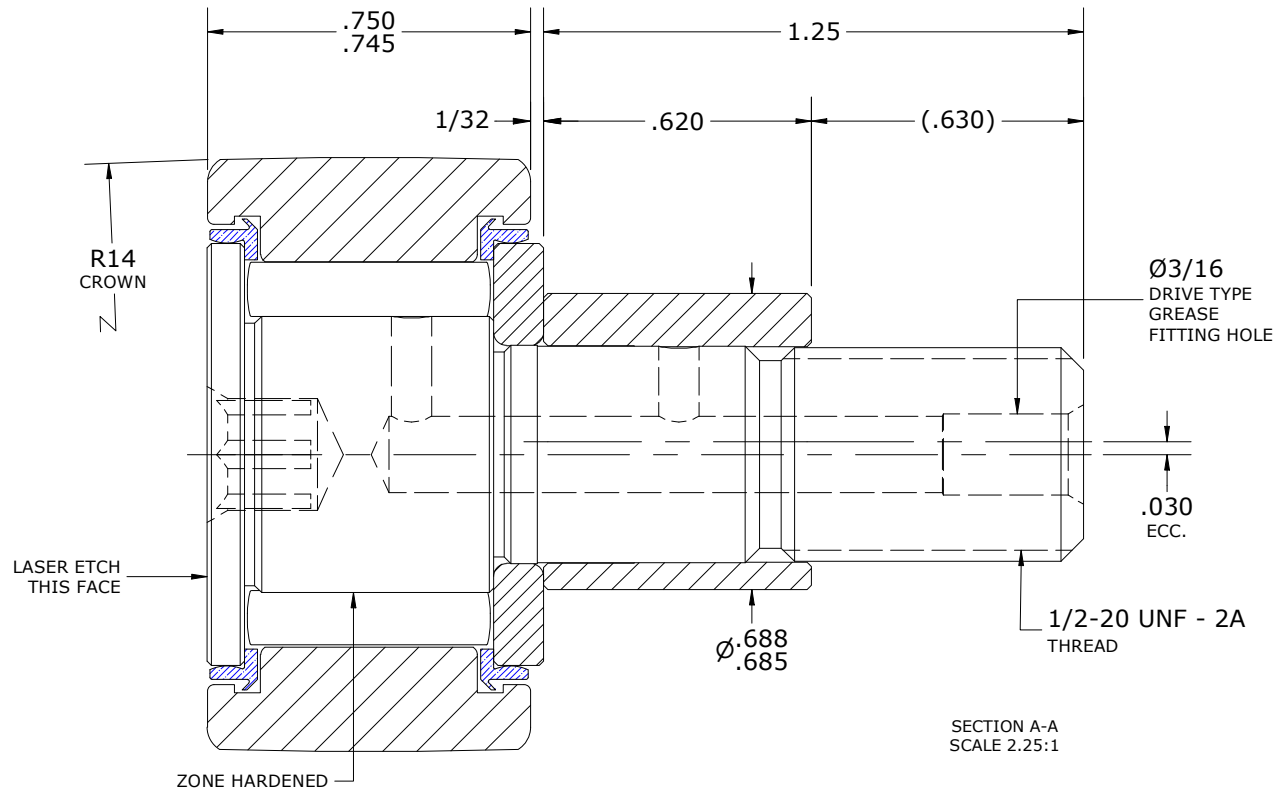
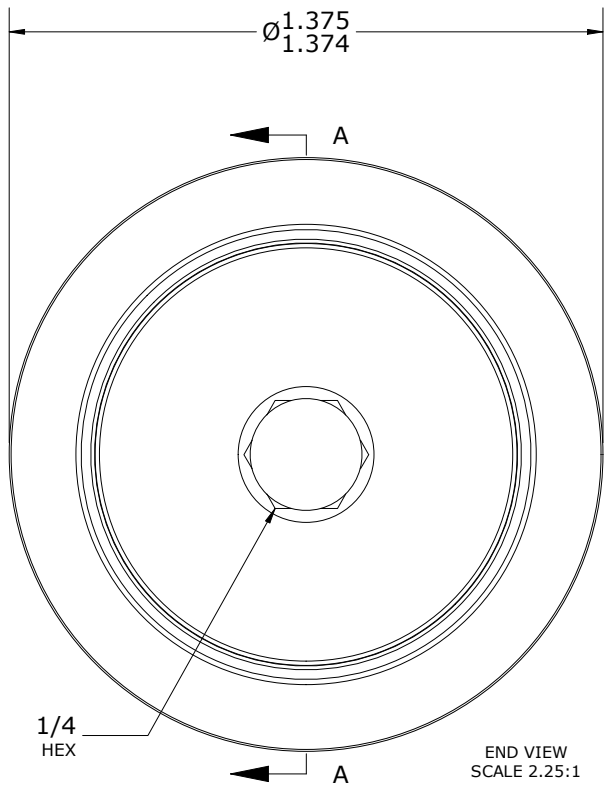
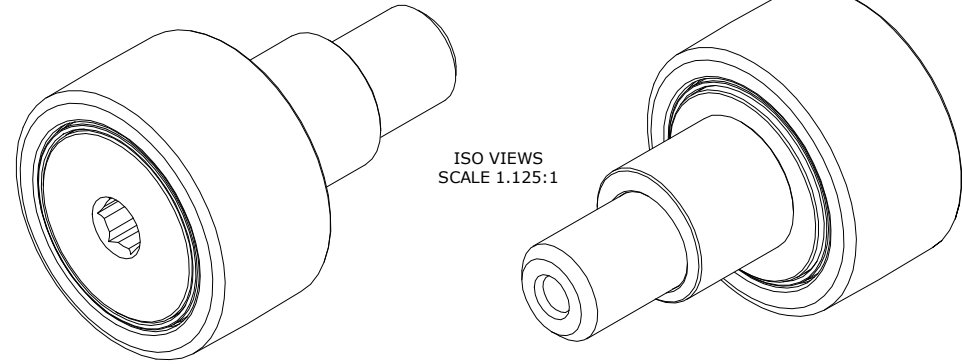
LOAD RATINGS		
RATING	lbf	Newtons
RADIAL BASIC DYNAMIC	3,930	17,481
MAXIMUM STATIC CAPACITY	4,250	18,904

RECOMMENDED MOUNTING HOLE Ø		
Limit	Inch	mm
MIN	.689	17.501
MAX	.691	17.551

MAXIMUM CLAMPING TORQUE**		
Thread Type	Inch Lbs	Nm
LUBRICATED	175	20

- NOTES:
1. BEARING IS PACKED WITH NLGI GRADE 2, LITHIUM BASED GREASE (UNLESS OTHERWISE SPECIFIED)
  2. ALL EXPOSED STEEL SURFACES HAVE BLACK OXIDE
  3. CUSTOM LASER ETCHING UPON REQUEST
  4. LIMITING SPEED:
    - A. GREASE = 2,800 RPM

DRAWING NO. CCNBE-44-SB



\*\*TORQUE SPECIFICATIONS IS BASED ON LUBRICATED THREADS, IF USING DRY THREADS DOUBLE TORQUE VALUE

MATERIAL NOTES:	OUTER RING - BEARING STEEL, HEAT TREATED
	STUD - BEARING STEEL, ZONE HARDENED
	NEEDLE ROLLER(S) - BEARING STEEL, HEAT TREATED
	WASHER - BEARING STEEL, HEAT TREATED
	ECCENTRIC SLEEVE - STEEL
SEAL(S) - SYNTHETIC	

CUSTOMER PART#	XX = ± .01 XXX = ± .005 XXXX = ± .0005 ANGLES = ± 2' INCH [METRIC] FRACTION = ± 1/64
<b>ENGINEERING CHANGE ORDER NOTE</b>	

CARTER MANUFACTURING IS NOT RESPONSIBLE FOR TYPOGRAPHICAL ERRORS	
<b>REVISION</b>	
<b>C</b>	AUTHOR BY HG
REVISION BY DJB	DATE 7/31/2023

<b>CARTER MANUFACTURING CO., INC.</b> GRAND HAVEN, MICHIGAN 49417				PART NAME: ASSEMBLY		PRODUCT TYPE: Standard CF/YR	
DRAWN BY JAF	CHK'D BY MD	SALES KR	MATERIAL NOTED	DATE 7/31/2023	DATE 7/15/2016	SHEET 1 OF 2	