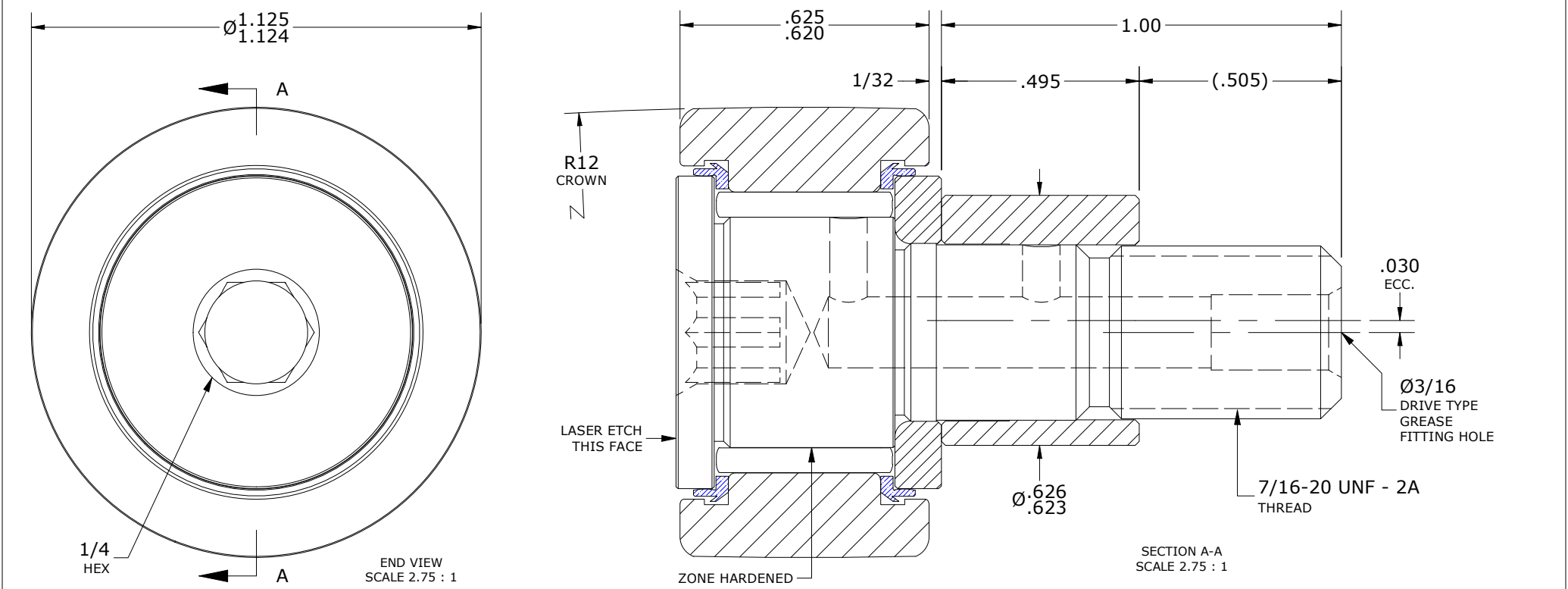
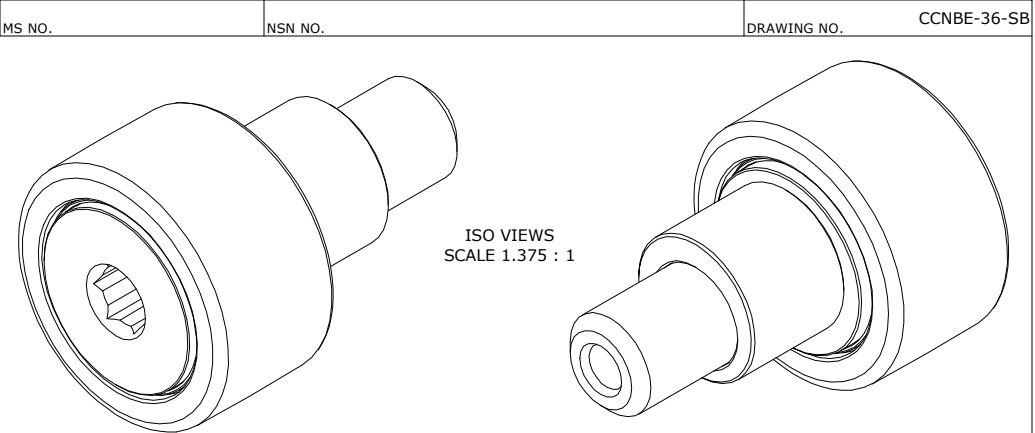


LOAD RATINGS		
RATING	lbf	Newtons
RADIAL BASIC DYNAMIC	2,225	9,897
MAXIMUM STATIC CAPACITY	3,060	13,611

RECOMMENDED MOUNTING HOLE		
LIMIT	Inch	mm
MIN.	.627	15.926
MAX.	.629	15.977

MAXIMUM CLAMPING TORQUE **		
Thread Type	Inch lbf	Nm
LUBRICATED	125	14

- NOTES:
1. BEARING IS PACKED WITH NLGI GRADE 2, LITHIUM BASED GREASE UNLESS OTHERWISE SPECIFIED
 2. ALL EXPOSED STEEL SURFACES HAVE BLACK OXIDE
 3. CUSTOM LASER ETCHING IS AVAILABLE UPON REQUEST
 4. LIMITING SPEED:
A. GREASE = 3,400 RPM



** TORQUE SPECIFICATION IS BASED ON LUBRICATED THREADS, IF USING CLEAN DRY THREADS DOUBLE TORQUE VALUE

MATERIAL NOTES: OUTER RING - BEARING STEEL, HEAT TREATED STUD - BEARING STEEL, ZONE HARDENED NEEDLE ROLLER(S) - BEARING STEEL, HEAT TREATED WASHER - STEEL, HEAT TREATED SEAL(S) - SYNTHETIC ECCENTRIC SLEEVE - STEEL	CUSTOMER PART#	XX = ± .01 XXX = ± .005 XXXX = ± .0005 ANGLES = ± 1° INCH [METRIC] FRACTION = ± 1/32	CARTER MANUFACTURING IS NOT RESPONSIBLE FOR TYPOGRAPHICAL ERRORS		CARTER MANUFACTURING CO., INC. GRAND HAVEN, MICHIGAN 49417				
	ENGINEERING CHANGE ORDER NOTE		REVISION		PART NAME: ASSEMBLY			PRODUCT TYPE: CNB	
			C	AUTHOR BY HG	DRAWN BY JGV	CHK'D BY MD	SALES NC	MATERIAL NOTED	
			REVISION BY SGW	DATE 2/1/2022	DATE 9/19/2003	DATE 1/28/2022	DATE 2/1/2022	SHEET 1 OF 2	