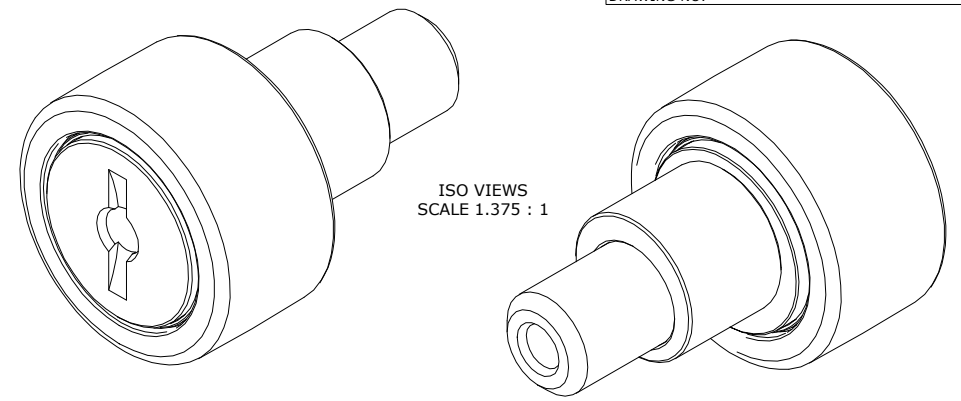


LOAD RATINGS		
RATING	lbf	Newtons
RADIAL BASIC DYNAMIC	2,225	9,897
MAXIMUM STATIC CAPACITY	3,060	13,611

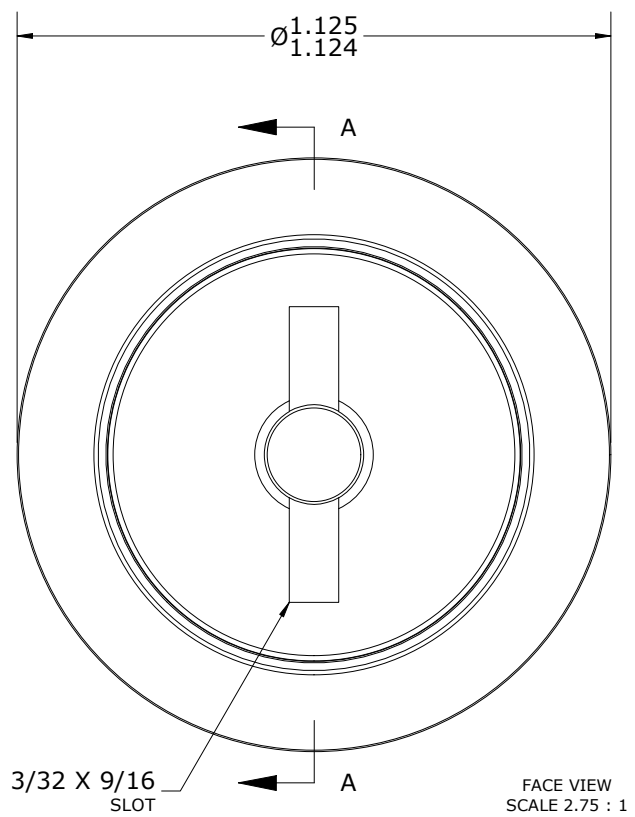
RECOMMENDED MOUNTING HOLE Ø		
Limit	Inch	mm
MIN	.627	15.926
MAX	.629	15.977

MAXIMUM CLAMPING TORQUE**		
Thread Type	Inch lbf	Nm
LUBRICATED	125	14

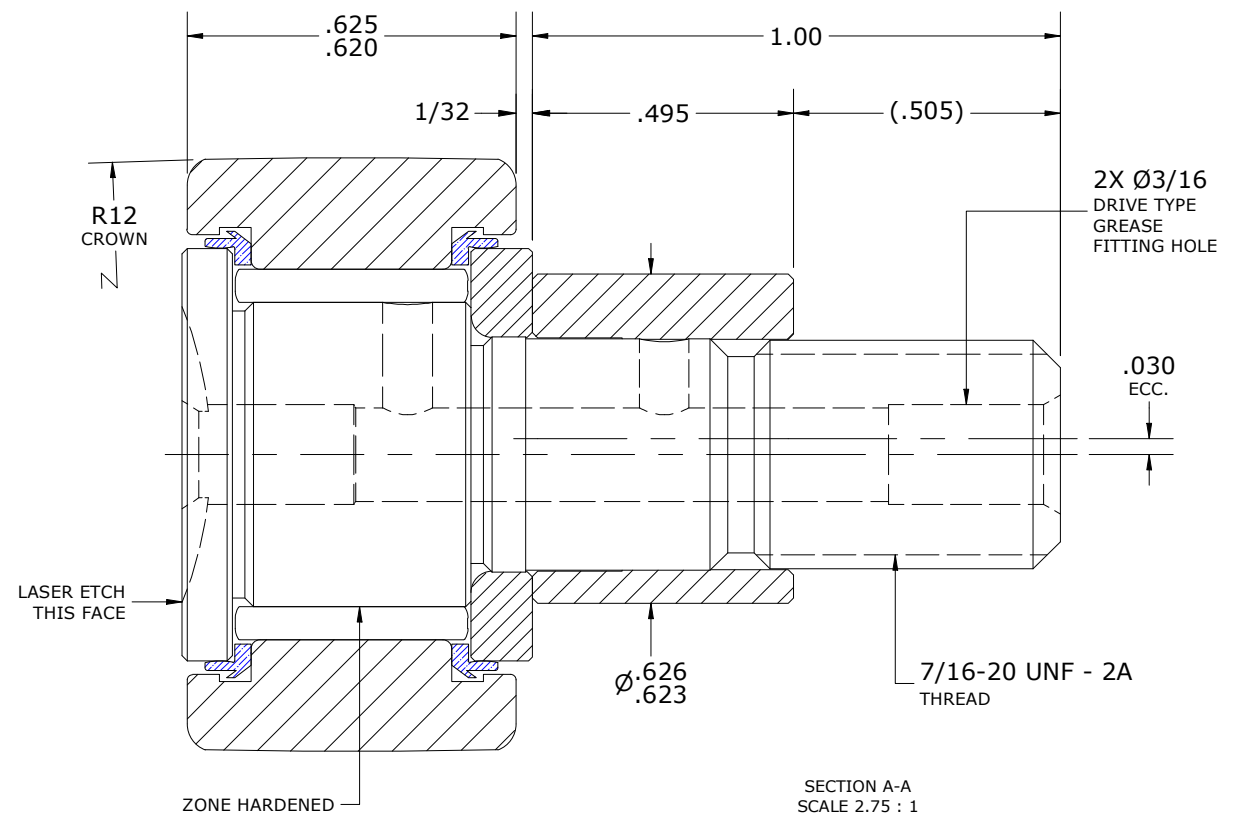
- NOTES:
- BEARING IS PACKED WITH NLGI GRADE 2, LITHIUM BASED GREASE (UNLESS OTHERWISE SPECIFIED)
 - ALL EXPOSED SURFACES HAVE BLACK OXIDE
 - CUSTOM LASER ETCHING IS AVAILABLE UPON REQUEST
 - LIMITING SPEED:
 - A. GREASE = 3,400 RPM



ISO VIEWS
SCALE 1.375 : 1



FACE VIEW
SCALE 2.75 : 1



SECTION A-A
SCALE 2.75 : 1

**TORQUE SPECIFICATION IS BASED ON LUBRICATED THREADS, IF USING DRY THREADS DOUBLE TORQUE VALUE

MATERIAL NOTES:

OUTER RING - BEARING STEEL, HEAT TREATED
STUD - BEARING STEEL, ZONE HARDENED
NEEDLE ROLLER(S) - BEARING STEEL, HEAT TREATED
WASHER - STEEL, HEAT TREATED
ECCENTRIC SLEEVE - STEEL
SEAL(S) - SYNTHETIC

CUSTOMER PART#	XX = ± .01 XXX = ± .005 XXXX = ± .0005 ANGLES = ± 2' INCH (METRIC) FRACTION = ± 1/64
ENGINEERING CHANGE ORDER NOTE	
CARTER STANDARD SURFACE FINISH IS MEASURED IN "Ra" UNITS UNLESS OTHERWISE SPECIFIED.	

CARTER MANUFACTURING IS NOT RESPONSIBLE FOR TYPOGRAPHICAL ERRORS

REVISION	
C	AUTHOR BY HG
REVISION BY DJB	DATE 5/23/2024

CARTER MANUFACTURING CO., INC.					
GRAND HAVEN, MICHIGAN 49417					
PART NAME: ASSEMBLY			PRODUCT TYPE: Standard CF/YR		
SALES	MATERIAL	DRAWN BY	CHK'D BY	DATE	SHEET
KR	NOTED	EMD	MD	5/23/2024	1 OF 2
DATE	DATE	DATE	DATE	DATE	DATE
4/7/2013		6/27/2006	5/23/2024		