

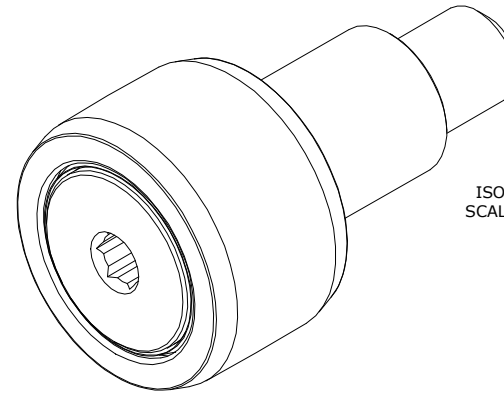
LOAD RATINGS	
RATING	Lbs
RADIAL BASIC DYNAMIC	955
MAXIMUM STATIC CAPACITY	1,215

**NOTES:**

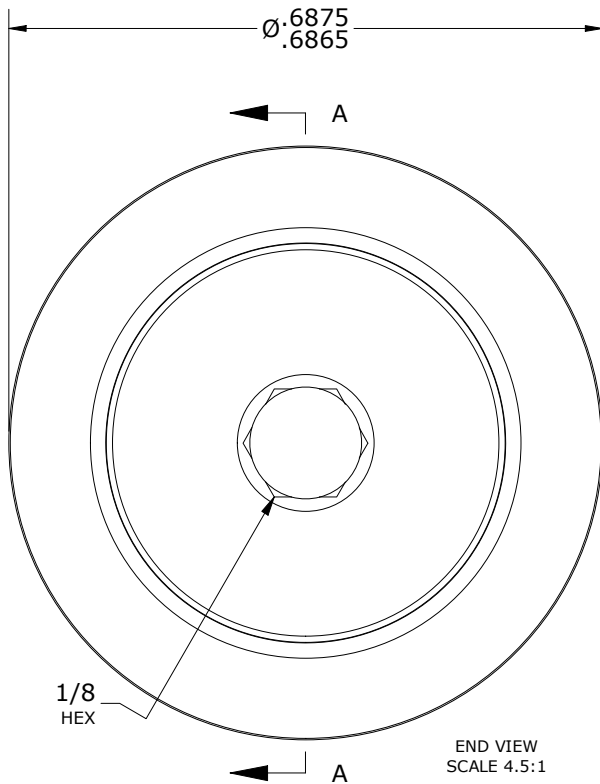
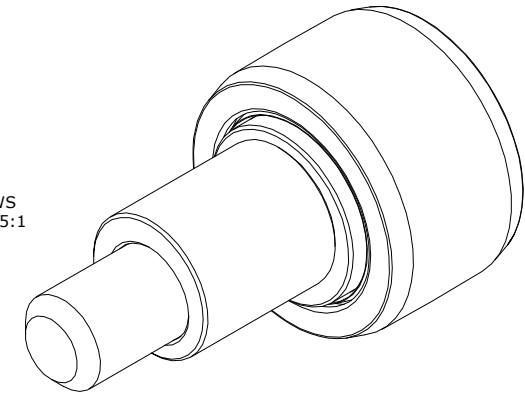
1. BEARING IS PACKED WITH NLGI GRADE 2, LITHIUM BASED GREASE (UNLESS OTHERWISE SPECIFIED)
2. ALL EXPOSED SURFACES HAVE BLACK OXIDE
3. CUSTOM LASER ETCHING IS AVAILABLE UPON REQUEST

DRAWING NO.

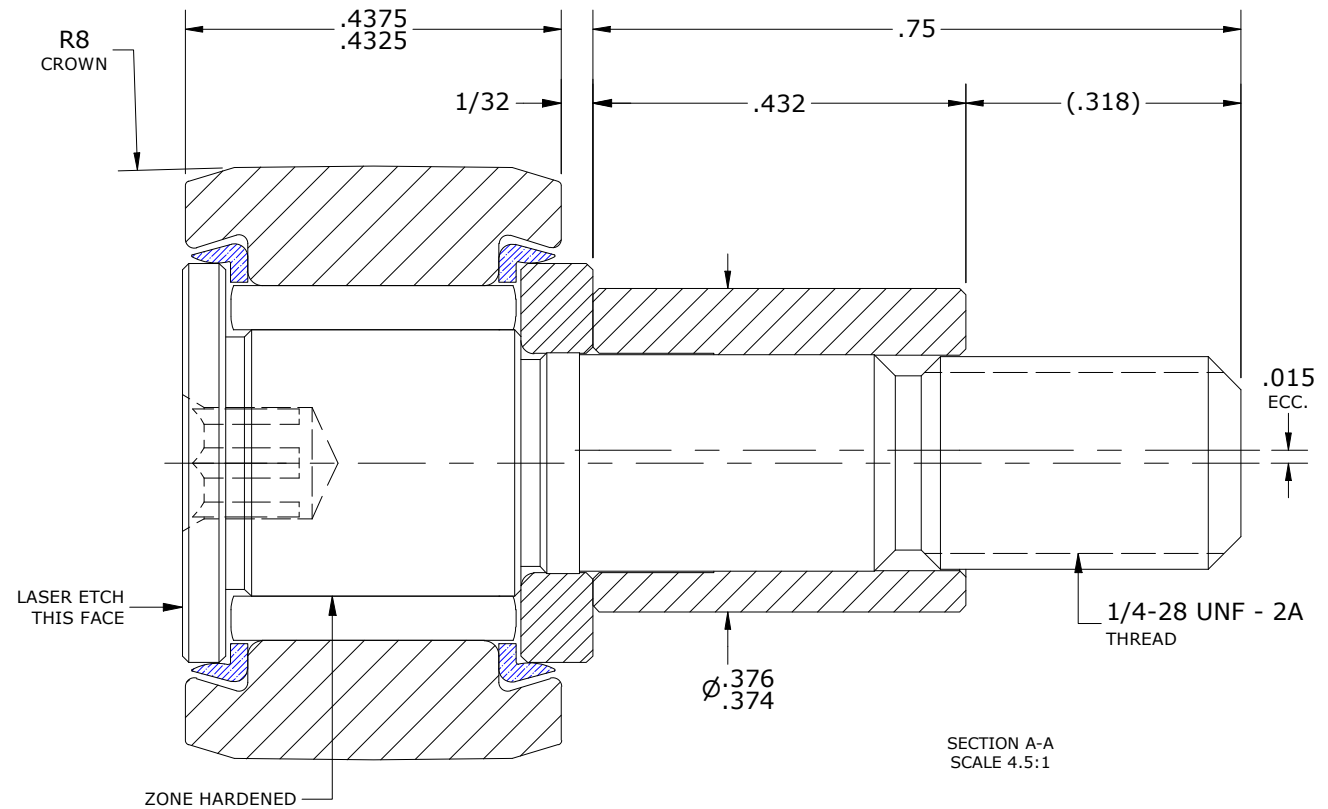
CCNBE-22-SB



ISO VIEWS  
SCALE 2.25:1



END VIEW  
SCALE 4.5:1



SECTION A-A  
SCALE 4.5:1

**MATERIAL NOTES:**  
 OUTER RING - BEARING STEEL, HEAT TREATED  
 STUD - BEARING STEEL, ZONE HARDENED  
 NEEDLE ROLLER(S) - BEARING STEEL, HEAT TREATED  
 WASHER - BEARING STEEL, HEAT TREATED  
 SEAL(S) - SYNTHETIC  
 ECCENTRIC SLEEVE - STEEL

CUSTOMER PART#  
 XX = ± .01  
 XXX = ± .005  
 XXXX = ± .0005  
 ANGLES = ± 2'  
 INCH [METRIC]  
 FRACTION = ± 1/64

CARTER MANUFACTURING IS NOT RESPONSIBLE FOR TYPOGRAPHICAL ERRORS

**CARTER MANUFACTURING CO., INC.**  
 GRAND HAVEN, MICHIGAN 49417

**ENGINEERING CHANGE ORDER NOTE**

REVISION	
<b>B</b>	AUTHOR BY HG
REVISION BY SGW	DATE 5/12/2014

PART NAME: ASSEMBLY				PRODUCT TYPE: Standard CF/YR	
DRAWN BY	CHK'D BY	SALES	MATERIAL	DATE	SHEET
EMD	MD	KR	NOTED	5/14/2014	1 OF 2

CARTER STANDARD SURFACE FINISH IS MEASURED IN "Ra" UNITS UNLESS OTHERWISE SPECIFIED.