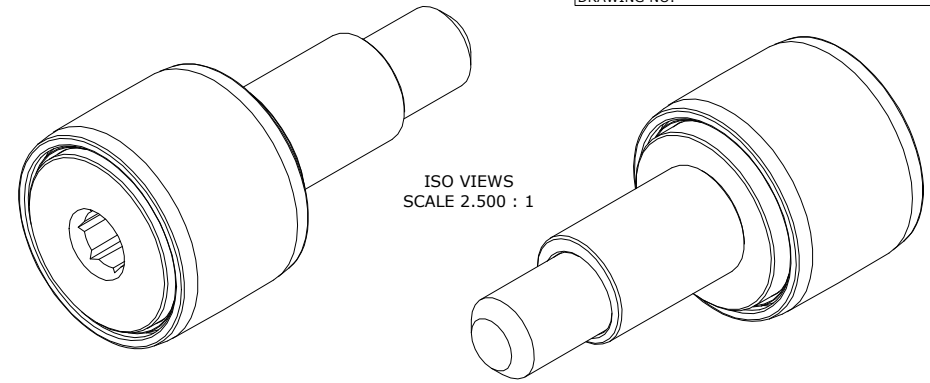


LOAD RATINGS		
RATING	lbf	Newtons
RADIAL BASIC DYNAMIC	680	3,025
MAXIMUM STATIC CAPACITY	790	3,514

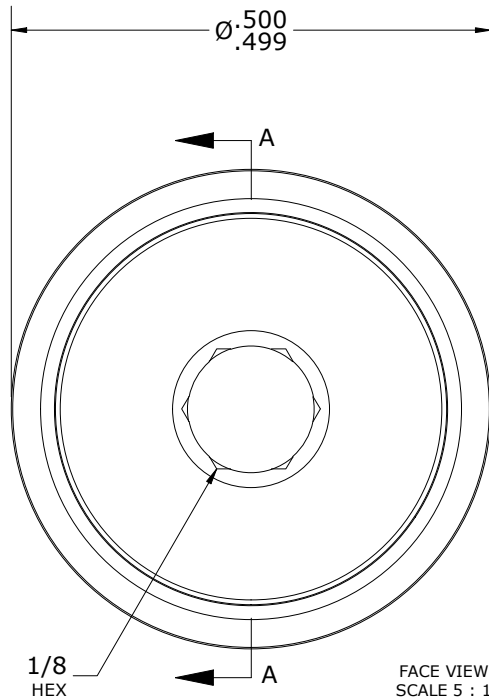
- NOTES:
1. BEARING IS PACKED WITH NLGI GRADE 2, LITHIUM BASED GREASE (UNLESS OTHERWISE SPECIFIED)
 2. ALL EXPOSED STEEL SURFACES HAVE BLACK OXIDE
 3. CUSTOM LASER ETCHING AVAILABLE UPON REQUEST
 4. LIMITING SPEED:
 - A. GREASE = 11,500 RPM

RECOMMENDED MOUNTING HOLE Ø		
Limit	Inch	mm
MIN	.252	6.4008
MAX	.254	6.4516

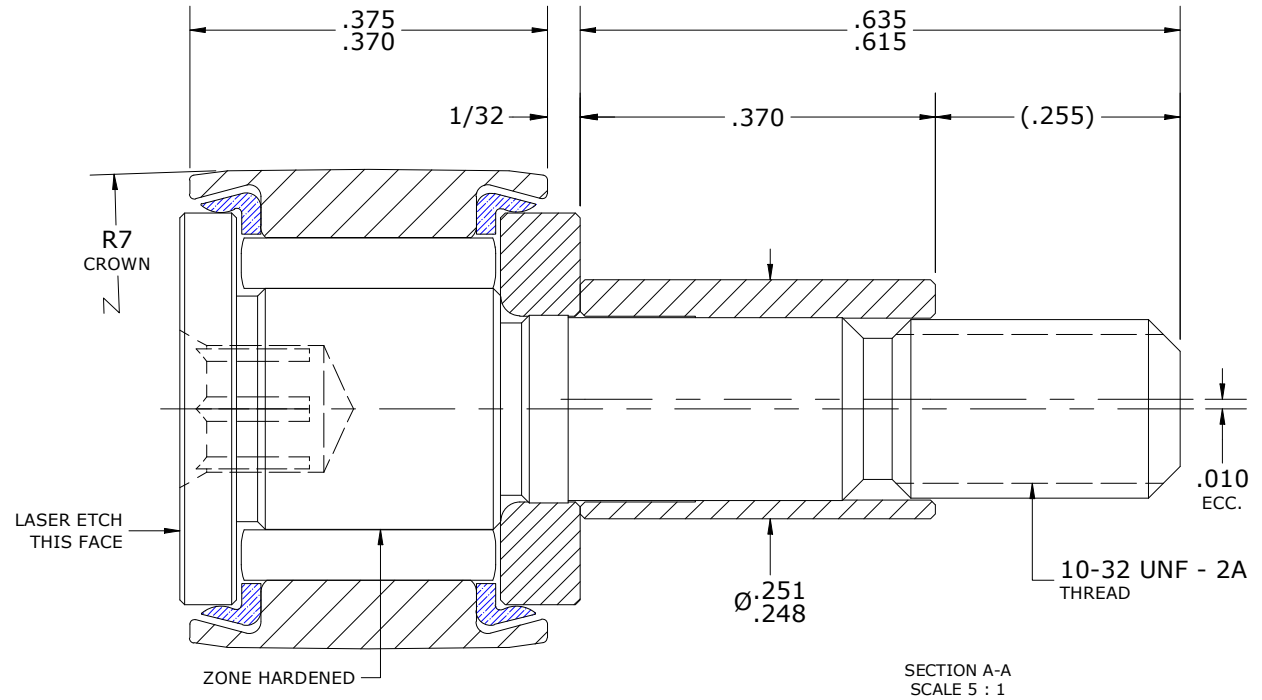
MAXIMUM CLAMPING TORQUE**		
Thread Type	Inch lbf	Nm
LUBRICATED	7.5	.85



ISO VIEWS
SCALE 2.500 : 1



FACE VIEW
SCALE 5 : 1



SECTION A-A
SCALE 5 : 1

**TORQUE SPECIFICATION IS BASED ON LUBRICATED THREADS, IF USING DRY THREADS DOUBLE TORQUE VALUE

- MATERIAL NOTES:
- OUTER RING - BEARING STEEL, HEAT TREATED
 - STUD - BEARING STEEL, ZONE HARDENED
 - NEEDLE ROLLER(S) - BEARING STEEL, HEAT TREATED
 - WASHER - BEARING STEEL, HEAT TREATED
 - SEAL(S) - SYNTHETIC
 - ECCENTRIC SLEEVE - STEEL

CUSTOMER PART#	XX = ± .01 XXX = ± .005 XXXX = ± .0005 ANGLES = ± 2' INCH [METRIC] FRACTION = ± 1/64
ENGINEERING CHANGE ORDER NOTE	
CARTER STANDARD SURFACE FINISH IS MEASURED IN "Ra" UNITS UNLESS OTHERWISE SPECIFIED.	

CARTER MANUFACTURING IS NOT RESPONSIBLE FOR TYPOGRAPHICAL ERRORS	
REVISION	
D	AUTHOR BY HG
REVISION BY DJB	DATE 10/10/2023

CARTER MANUFACTURING CO., INC. GRAND HAVEN, MICHIGAN 49417				PART NAME: ASSEMBLY		PRODUCT TYPE: Standard CF/YR	
DRAWN BY AJH	CHK'D BY MD	SALES KR	MATERIAL NOTED	DATE 4/12/2002	DATE 10/10/2023	DATE 3/8/2011	SHEET 1 OF 2