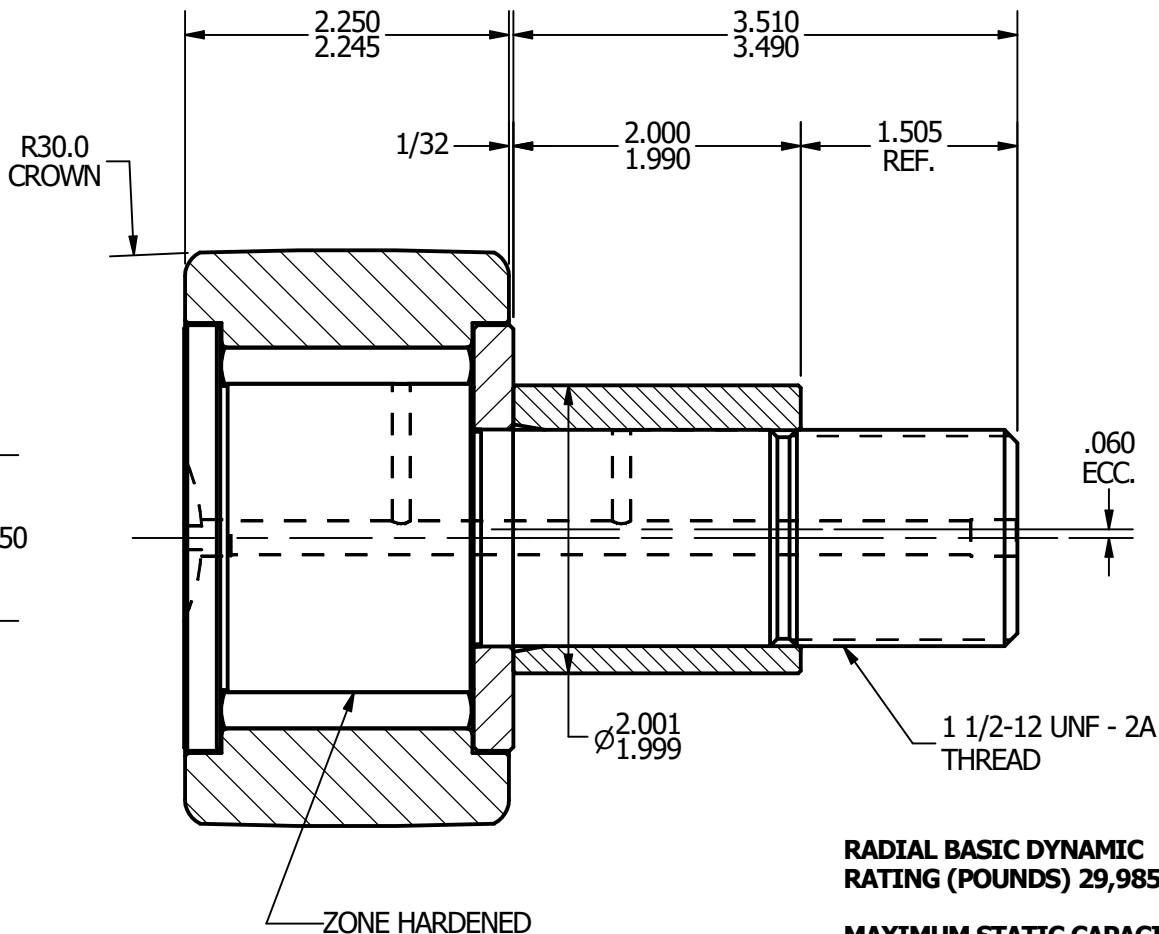
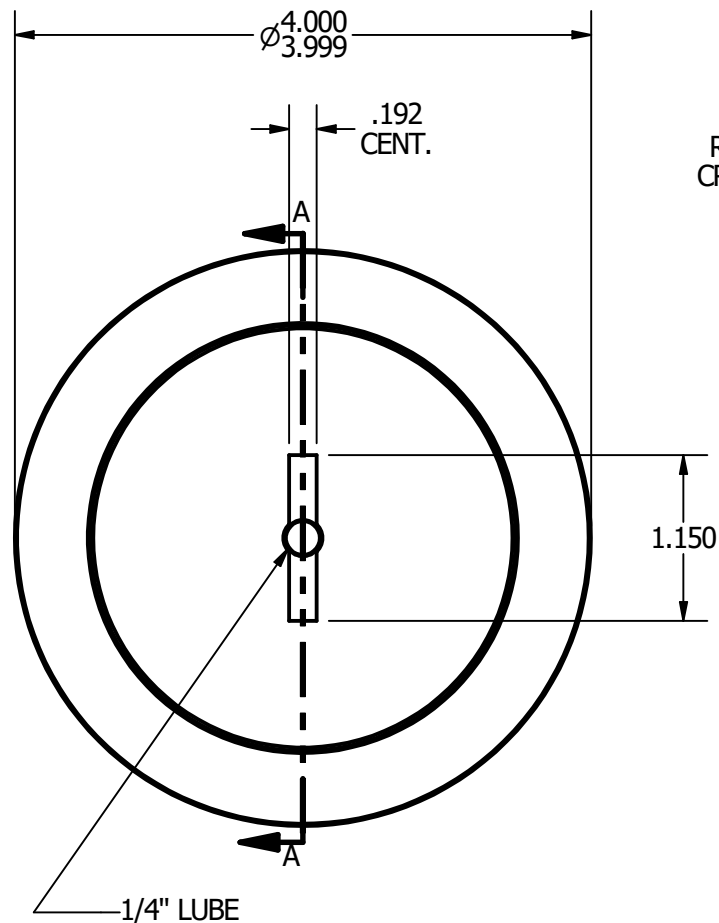
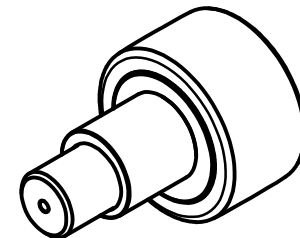


- NOTES:**
- 1. BEARING IS PACKED WITH GREASE**
 - 2. ALL EXPOSED SURFACES ARE BLACK OXIDED**



**RADIAL BASIC DYNAMIC
RATING (POUNDS) 29,985**

**MAXIMUM STATIC CAPACITY
(POUNDS) 44,770**

MATERIAL NOTES:

**OUTER - BEARING STEEL, HEAT TREATED
STUD - BEARING STEEL, ZONE HARDENED
ROLLER - BEARING STEEL, HEAT TREATED
WASHER - COLD ROLLED STEEL, HEAT TREATED
ECCENTRIC SLEEVE - COLD ROLLED STEEL**

CUSTOMER PART#

.XX = $\pm .01$
.XXX = $\pm .005$
.XXXX = $\pm .0005$
ANGLES = $\pm 1^\circ$
INCH [METRIC]

CARTER MANUFACTURING IS
NOT RESPONSIBLE FOR
TYPOGRAPHICAL ERRORS

CARTER MANUFACTURING CO., INC.

GRAND HAVEN, MICHIGAN 49417

REVISION

PART NAME: Assembly

SHEET 1 OF 2

A

AUTHOR. BY

DRAWN BY

CHK'D BY

SALES

MATERIAL

JGV

EMD

JGV

KPR

NOTED

REV. BY

DATE

DATE

DATE

DATE

DRAWING NO.

EMD

7/6/2006

7/6/2006

7/6/2006

7/5/2006

CCNBE-128