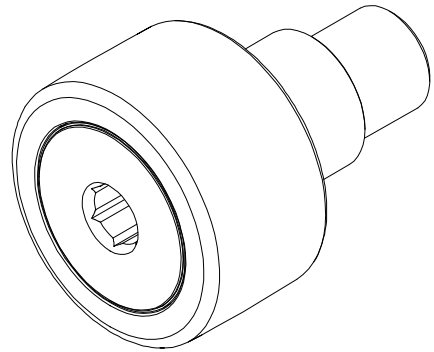


| LOAD RATINGS            |        |         |
|-------------------------|--------|---------|
| RATING                  | lbf    | Newtons |
| RADIAL BASIC DYNAMIC    | 22,800 | 101,419 |
| MAXIMUM STATIC CAPACITY | 31,625 | 140,675 |

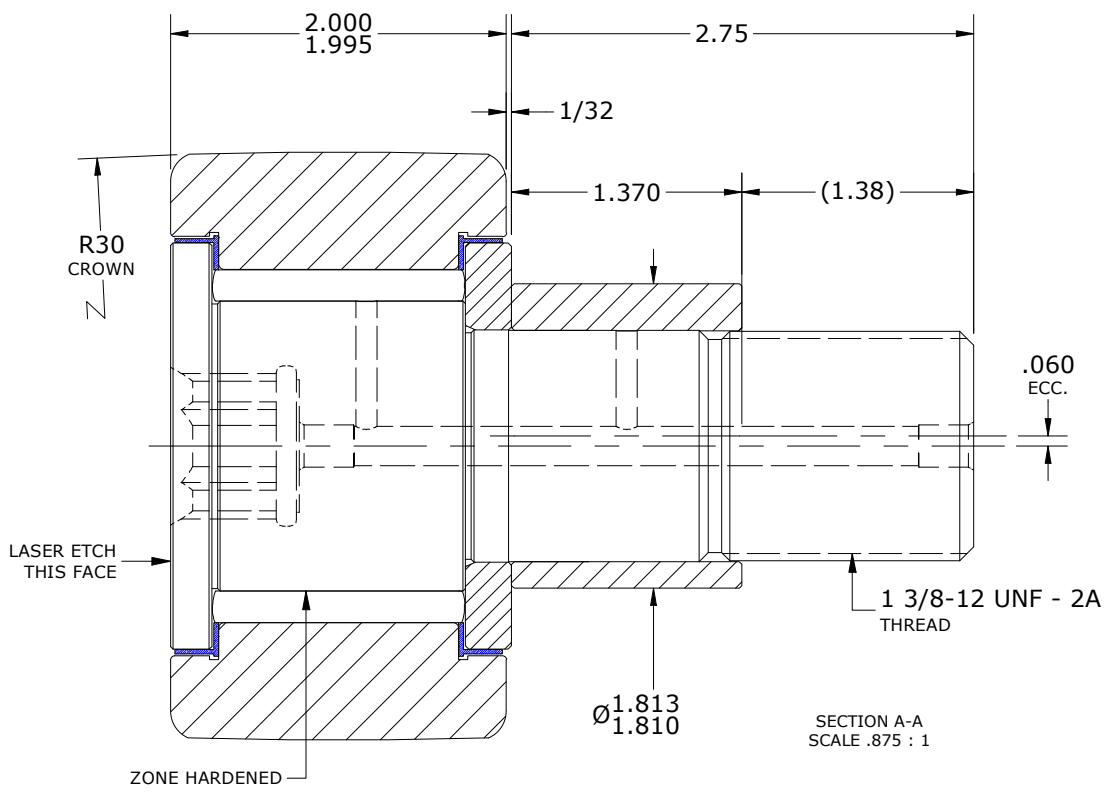
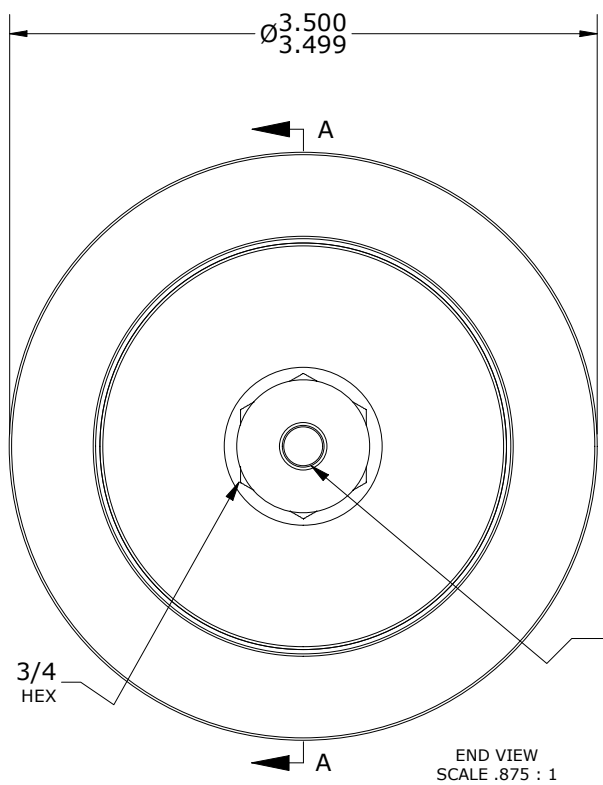
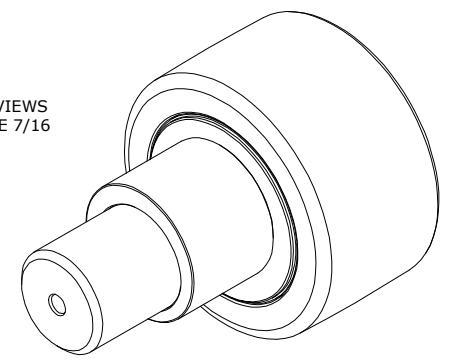
- NOTES:
1. BEARING IS PACKED WITH NLGI GRADE 2, LITHIUM BASED GREASE (UNLESS OTHERWISE SPECIFIED)
  2. ALL EXPOSED STEEL SURFACES HAVE BLACK OXIDE
  3. CUSTOM LASER ETCHING UPON REQUEST
  4. LIMITING SPEED:  
A. GREASE = 820 RPM

| RECOMMENDED MOUNTING HOLE Ø |       |         |
|-----------------------------|-------|---------|
| Limit                       | Inch  | mm      |
| MIN                         | 1.816 | 46.1264 |
| MAX                         | 1.814 | 46.0756 |

| MAXIMUM CLAMPING TORQUE** |          |     |
|---------------------------|----------|-----|
| Thread Type               | Inch lbf | Nm  |
| LUBRICATED                | 2,100    | 237 |



ISO VIEWS  
SCALE 7/16



\*\*TORQUE SPECIFICATION IS BASED ON LUBRICATED THREADS, IF USING DRY THREADS DOUBLE TORQUE VALUE

MATERIAL NOTES:

- OUTER RING - BEARING STEEL, HEAT TREATED
- STUD - BEARING STEEL, ZONE HARDENED
- NEEDLE ROLLER(S) - BEARING STEEL, HEAT TREATED
- WASHER - STEEL, HEAT TREATED
- SEAL(S) - SYNTHETIC
- ECCENTRIC SLEEVE - STEEL

|                                      |                                                                                                     |
|--------------------------------------|-----------------------------------------------------------------------------------------------------|
| CUSTOMER PART#                       | XX = ± .01<br>XXX = ± .005<br>XXXX = ± .0005<br>ANGLES = ± 2'<br>INCH [METRIC]<br>FRACTION = ± 1/64 |
| <b>ENGINEERING CHANGE ORDER NOTE</b> |                                                                                                     |

CARTER MANUFACTURING IS NOT RESPONSIBLE FOR TYPOGRAPHICAL ERRORS

**CARTER MANUFACTURING CO., INC.**  
GRAND HAVEN, MICHIGAN 49417

| REVISION           |                   | PART NAME: ASSEMBLY |                   | PRODUCT TYPE: CNB |                   |
|--------------------|-------------------|---------------------|-------------------|-------------------|-------------------|
| <b>B</b>           | AUTHOR BY<br>HG   | DRAWN BY<br>EMD     | CHK'D BY<br>MD    | SALES<br>NC       | MATERIAL<br>NOTED |
| REVISION BY<br>SGW | DATE<br>5/27/2022 | DATE<br>7/7/2006    | DATE<br>5/27/2022 | DATE<br>5/27/2022 | SHEET<br>1 OF 2   |