

**LOAD RATINGS**

RATING	lbf	Newtons
RADIAL BASIC DYNAMIC	8,090	35,986
MAXIMUM STATIC CAPACITY	10,570	47,018

MS NO.

NSN NO.

DRAWING NO.

CCNB-72-B

**RECOMMENDED MOUNTING HOLE Ø**

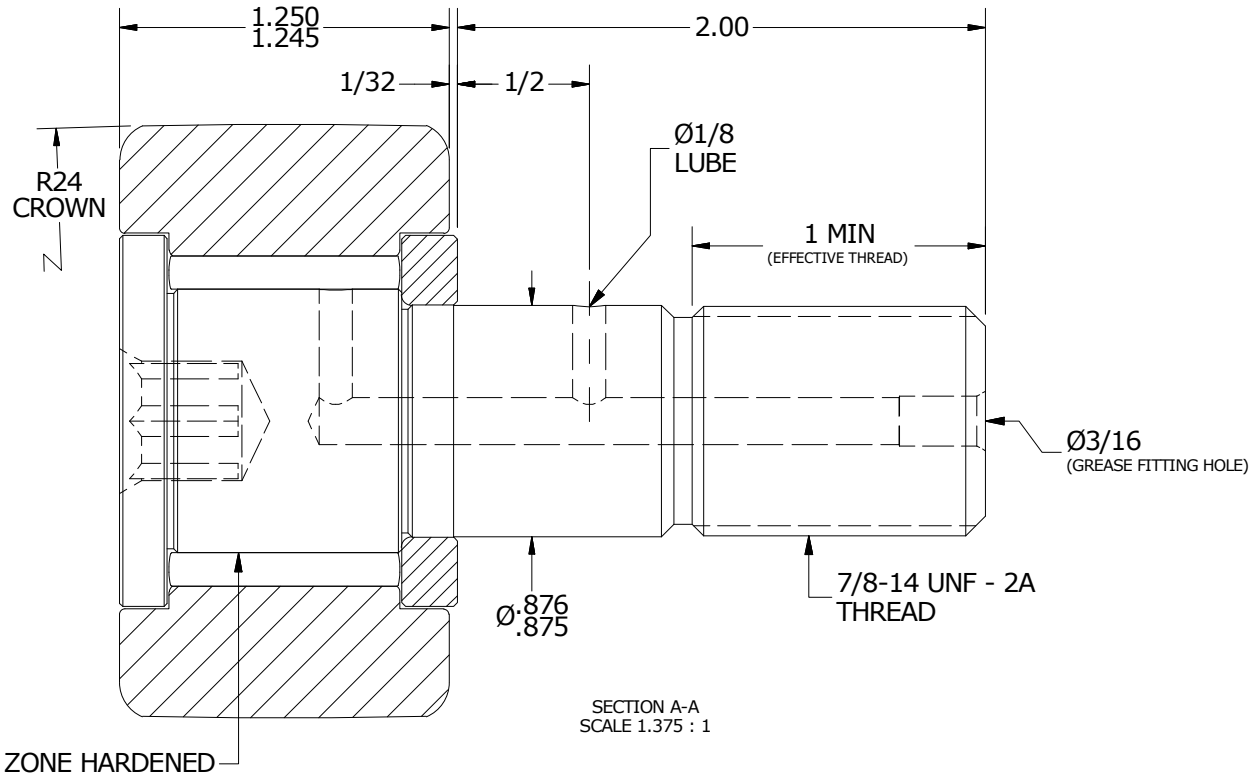
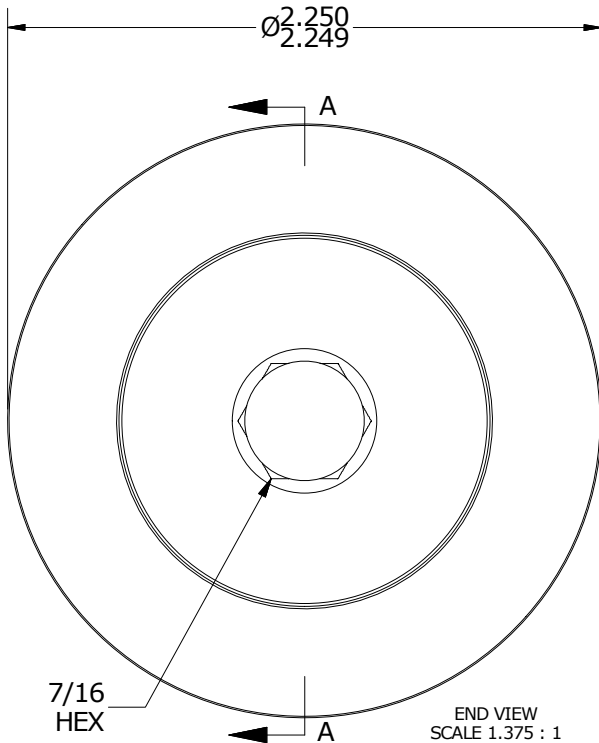
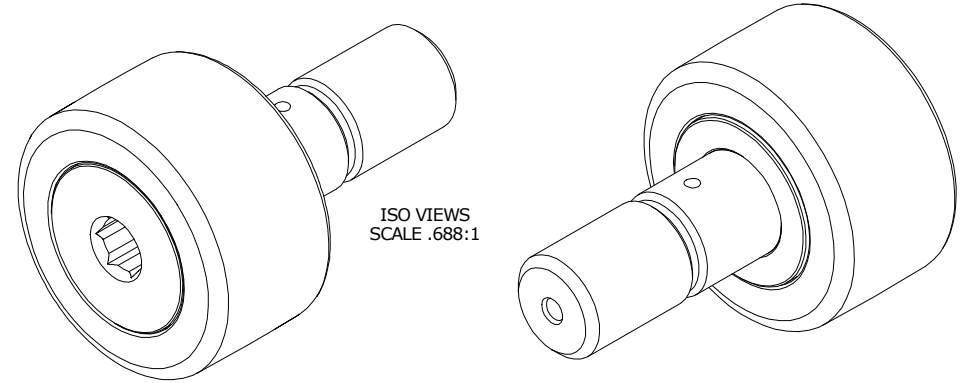
Limit	Inch	mm
MIN	.8750	22.2250
MAX	.8755	22.2377

**NOTES:**

1. BEARING IS PACKED WITH NLGI GRADE 2, LITHIUM BASED GREASE (UNLESS OTHERWISE SPECIFIED)
2. ALL EXPOSED SURFACES HAVE BLACK OXIDE
3. LIMITING SPEED:  
A. GREASE = 1,400 RPM

**MAXIMUM CLAMPING TORQUE**

Thread Type	Inch Lbs	Nm
DRY	1500	169.5
LUBRICATED	750	84.7



**MATERIAL NOTES:**

- OUTER RING - BEARING STEEL, HEAT TREATED
- STUD - BEARING STEEL, ZONE HARDENED
- NEEDLE ROLLER(S) - BEARING STEEL, HEAT TREATED
- WASHER - BEARING STEEL, HEAT TREATED

CUSTOMER PART#

XX = ± .01  
XXX = ± .005  
XXXX = ± .0005  
ANGLES = ± 1'  
INCH [METRIC]  
FRACTION = ± 1/32

CARTER MANUFACTURING IS NOT RESPONSIBLE FOR TYPOGRAPHICAL ERRORS

**CARTER MANUFACTURING CO., INC.**

GRAND HAVEN, MICHIGAN 49417

ENGINEERING CHANGE ORDER NOTE

REVISION

PART NAME: ASSEMBLY

PRODUCT TYPE: CNB

**B**

AUTHOR BY  
HG

DRAWN BY  
JAF

CHK'D BY  
MD

SALES  
KR

MATERIAL  
NOTED

REVISION BY

DATE

DATE

DATE

DATE

SHEET

JLB

8/1/2018

7/12/2006

8/1/2018

8/2/2018

1 OF 2