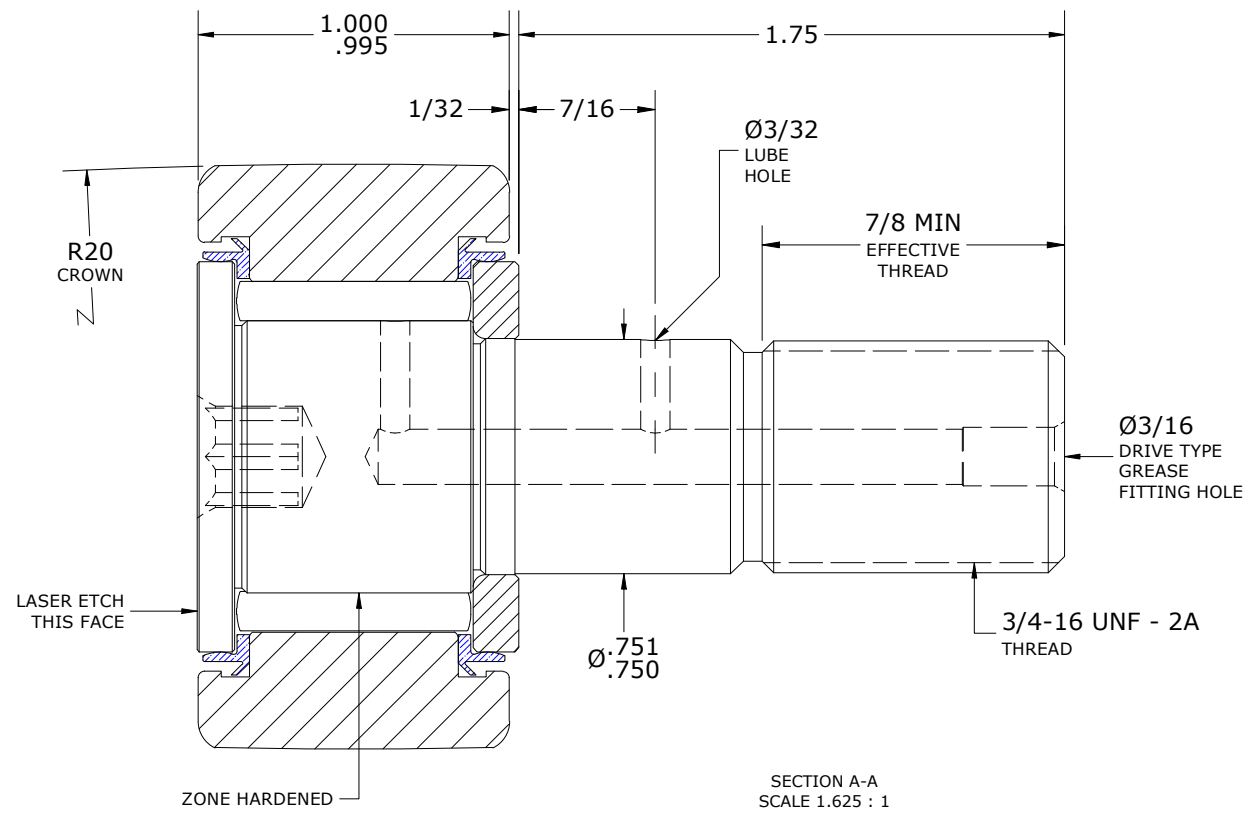
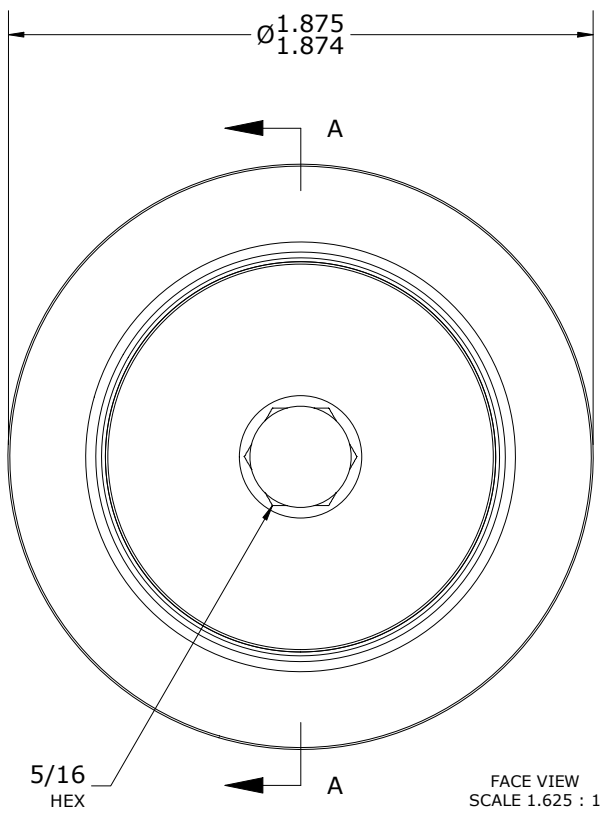
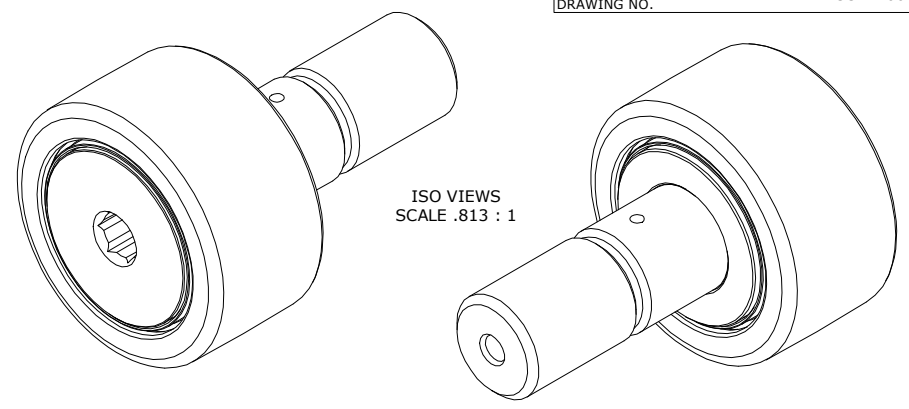


LOAD RATINGS		
RATING	lbf	Newtons
RADIAL BASIC DYNAMIC	6,385	28,402
MAXIMUM STATIC CAPACITY	7,920	35,230

- NOTES:
1. BEARING IS PACKED WITH NLGI GRADE 2, LITHIUM BASED GREASE (UNLESS OTHERWISE SPECIFIED)
  2. ALL EXPOSED STEEL SURFACES HAVE BLACK OXIDE
  3. CUSTOM LASER ETCHING AVAILABLE UPON REQUEST
  4. LIMITING SPEED:
    - A. GREASE = 2,000 RPM

RECOMMENDED MOUNTING HOLE Ø		
Limit	Inch	mm
MIN	.7500	19.0500
MAX	.7505	19.0627

MAXIMUM CLAMPING TORQUE**		
Thread Type	Inch lbf	Nm
LUBRICATED	625	70.6



\*\* (TORQUE SPECIFICATION IS BASED ON LUBRICATED THREADS, IF USING DRY THREADS DOUBLE TORQUE VALUE)

**MATERIAL NOTES:**

OUTER RING - BEARING STEEL, HEAT TREATED

STUD - BEARING STEEL, ZONE HARDENED

NEEDLE ROLLER(S) - BEARING STEEL, HEAT TREATED

WASHER - BEARING STEEL, HEAT TREATED

SEAL(S) - SYNTHETIC

<i>CUSTOMER PART#</i>	XX = ± .01 XXX = ± .005 XXXX = ± .0005 ANGLES = ± 2' INCH [METRIC] FRACTION = ± 1/64
<i>ENGINEERING CHANGE ORDER NOTE</i>	
CARTER STANDARD SURFACE FINISH IS MEASURED IN "Ra" UNITS UNLESS OTHERWISE SPECIFIED.	

CARTER MANUFACTURING IS NOT RESPONSIBLE FOR TYPOGRAPHICAL ERRORS				<b>CARTER MANUFACTURING CO., INC.</b> GRAND HAVEN, MICHIGAN 49417			
<i>REVISION</i>				PART NAME: ASSEMBLY		PRODUCT TYPE: Standard CF/YR	
<b>C</b>	<i>AUTHOR BY</i> HG	<i>DRAWN BY</i> EMD	<i>CHK'D BY</i> MD	<i>SALES</i> NC	<i>MATERIAL</i> NOTED		
<i>REVISION BY</i> DJB	<i>DATE</i> 1/12/2024	<i>DATE</i> 7/13/2006	<i>DATE</i> 1/12/2024	<i>DATE</i> 1/12/2024	<i>SHEET</i> 1 OF 2		