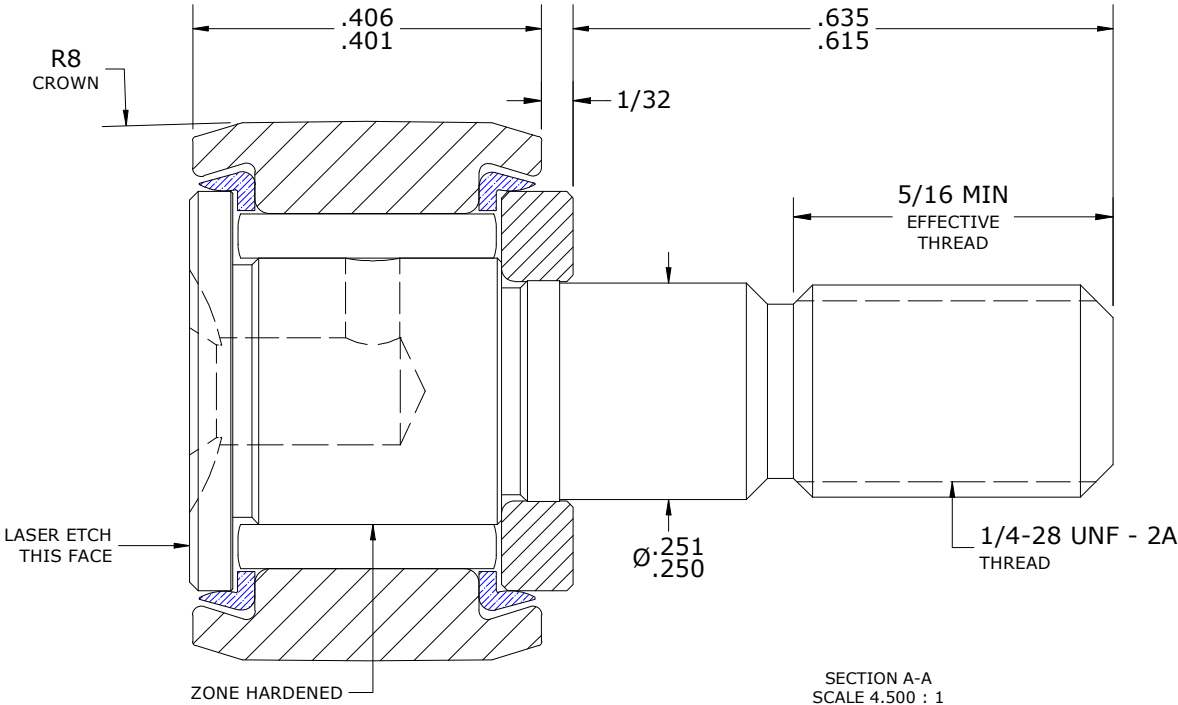
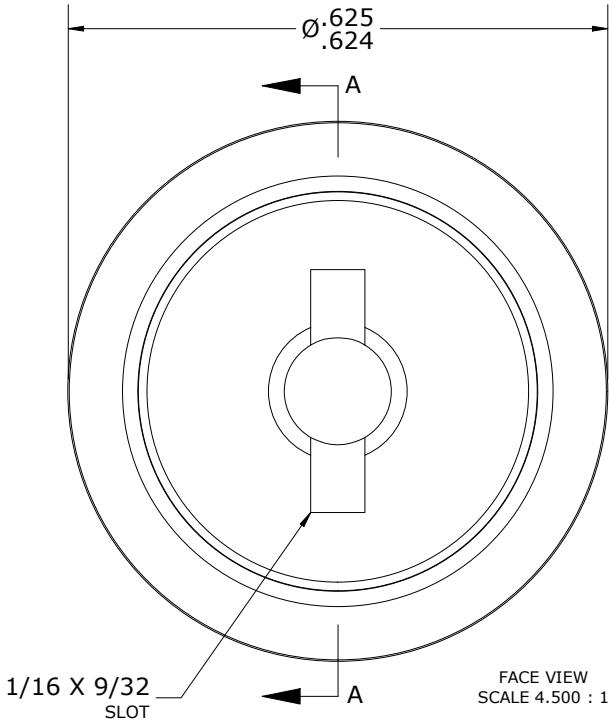
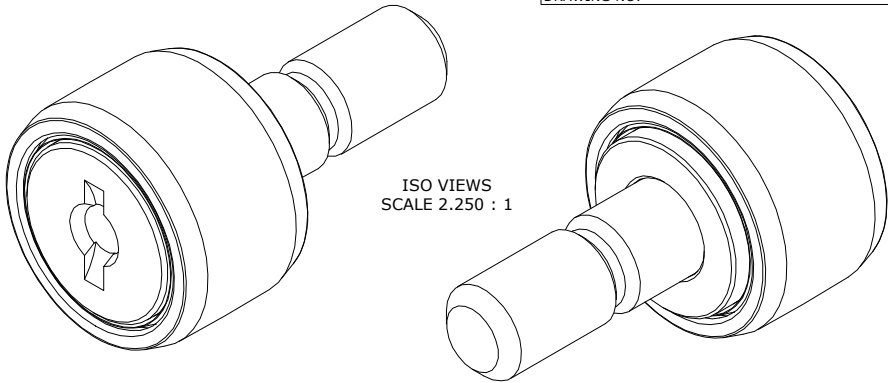


LOAD RATINGS		
RATING	lbf	Newtons
RADIAL BASIC DYNAMIC	930	4,137
MAXIMUM STATIC CAPACITY	1,085	4,826

RECOMMENDED MOUNTING HOLE Ø		
Limit	Inch	mm
MIN	.2500	6.3500
MAX	.2505	6.3627

MAXIMUM CLAMPING TORQUE**		
Thread Type	Inch lbf	Nm
LUBRICATED	17.5	1.98

- NOTES:
1. BEARING IS PACKED WITH NLGI GRADE 2, LITHIUM BASED GREASE (UNLESS OTHERWISE SPECIFIED)
  2. ALL EXPOSED STEEL SURFACES HAVE BLACK OXIDE
  3. CUSTOM LASER ETCHING UPON REQUEST
  4. LIMITING SPEED:  
A. GREASE = 9,200 RPM



\*\*TORQUE SPECIFICATION IS BASED ON LUBRICATED THREADS, IF USING DRY THREADS DOUBLE TORQUE VALUE

<p>MATERIAL NOTES:</p> <p>OUTER - BEARING STEEL, HEAT TREATED</p> <p>STUD - BEARING STEEL, ZONE HARDENED</p> <p>NEEDLE ROLLER(S) - BEARING STEEL, HEAT TREATED</p> <p>WASHER - BEARING STEEL, HEAT TREATED</p> <p>SEAL(S) - SYNTHETIC</p>	CUSTOMER PART#	XX = ± .01 XXX = ± .005 XXXX = ± .0005 ANGLES = ± 2' INCH [METRIC] FRACTION = ± 1/64	CARTER MANUFACTURING IS NOT RESPONSIBLE FOR TYPOGRAPHICAL ERRORS		<b>CARTER MANUFACTURING CO., INC.</b> GRAND HAVEN, MICHIGAN 49417			
	ENGINEERING CHANGE ORDER NOTE		REVISION		PART NAME: ASSEMBLY			PRODUCT TYPE: Standard CF/YR
			C	AUTHOR BY HG	DRAWN BY EMD	CHK'D BY MD	SALES KR	MATERIAL NOTED
			REVISION BY	DATE	DATE	DATE	DATE	SHEET
	CARTER STANDARD SURFACE FINISH IS MEASURED IN "Ra" UNITS UNLESS OTHERWISE SPECIFIED.		DJB	11/13/2023	6/20/2006	11/13/2023	9/28/2018	1 OF 2