

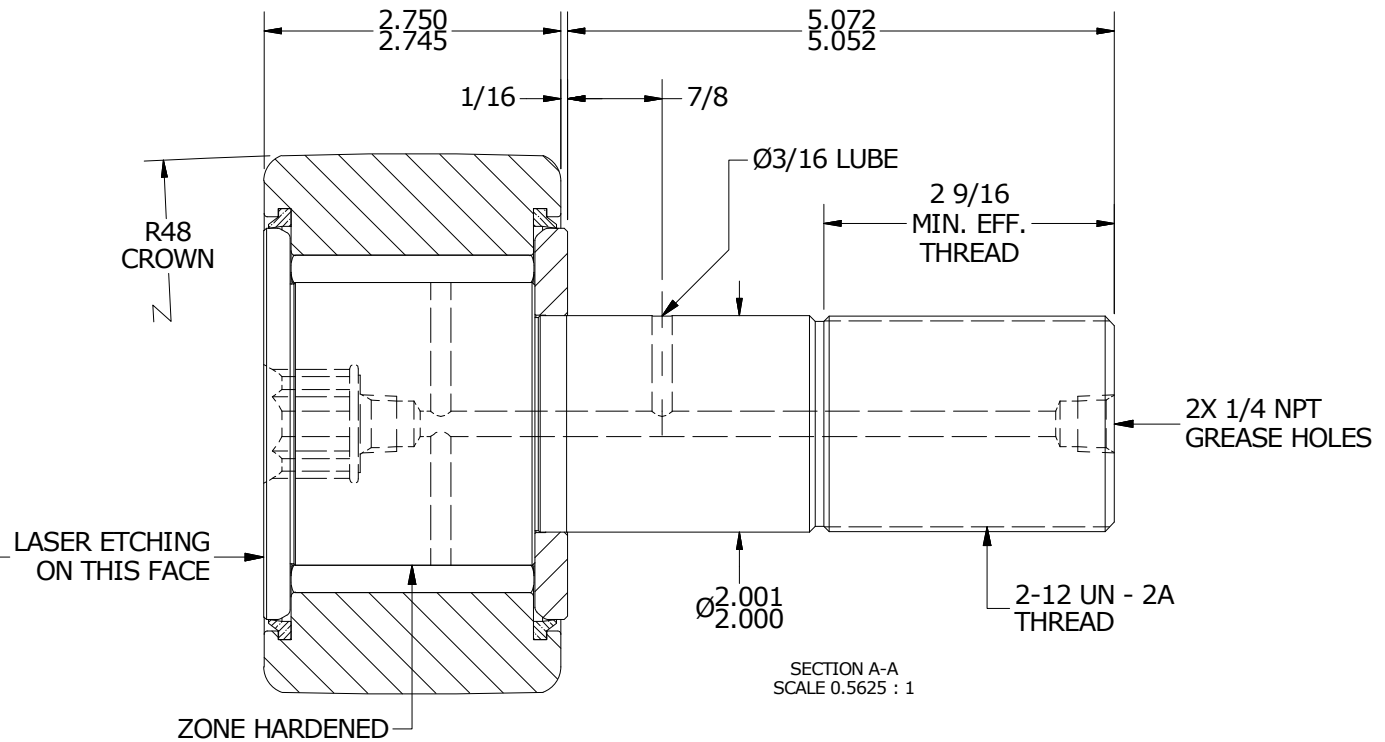
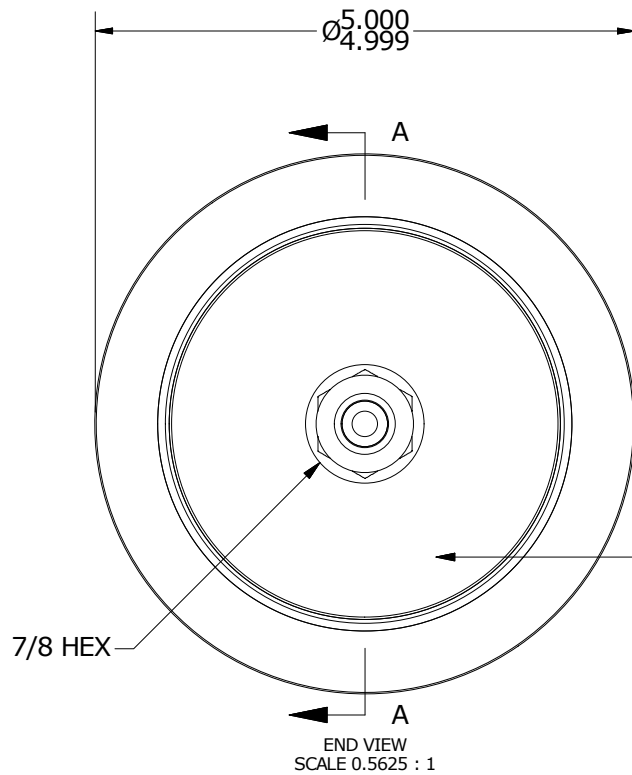
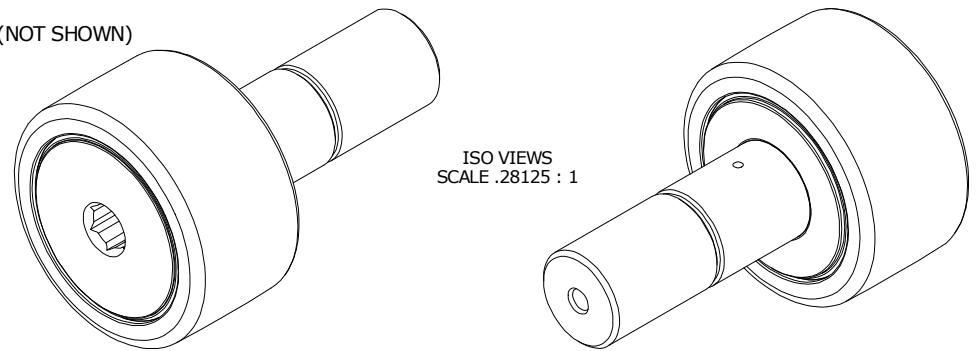
LOAD RATINGS		
RATING	lbf	Newtons
RADIAL BASIC DYNAMIC	46,575	207,166
MAXIMUM STATIC CAPACITY	67,950	302,242

RECOMMENDED MOUNTING HOLE Ø		
Limit	Inch	mm
MIN	2.0000	50.813
MAX	2.0005	50.800

MAXIMUM CLAMPING TORQUE		
Thread Type	Inch lbf	Nm
DRY	5,000	565
LUBRICATED	2,500	282.5

NOTES:

1. BEARING IS PACKED WITH NLGI GRADE 2, LITHIUM BASED GREASE UNLESS OTHERWISE SPECIFIED
2. ALL EXPOSED SURFACES HAVE BLACK OXIDE
3. GREASE FITTINGS AND GREASE PLUG SHIPPED LOOSE (NOT SHOWN)
4. CUSTOM LASER ETCHING UPON REQUEST
5. LIMITING SPEED:
 - A. GREASE = 575 RPM



MATERIAL NOTES:

OUTER RING - BEARING STEEL, HEAT TREATED
 STUD - BEARING STEEL, ZONE HARDENED
 NEEDLE ROLLERS - BEARING STEEL, HEAT TREATED
 WASHER - STEEL, HEAT TREATED
 SEALS - SYNTHETIC
 GREASE FITTINGS - ALEMITE No. 1627-B
 PLUG - BRASS

CUSTOMER PART#

XX = ± .01
 XXX = ± .005
 XXXX = ± .0005
 ANGLES = ± 1'
 INCH [METRIC]
 FRACTION = ± 1/32

CARTER MANUFACTURING IS
 NOT RESPONSIBLE FOR
 TYPOGRAPHICAL ERRORS

CARTER MANUFACTURING CO., INC.

GRAND HAVEN, MICHIGAN 49417

ENGINEERING CHANGE ORDER NOTE

REVISION

PART NAME: Assembly

PRODUCT TYPE: CCNB

B

AUTHOR BY
HG

DRAWN BY
GJP

CHK'D BY
SGW

SALES
KPR

MATERIAL
NOTED

REVISION BY
MD

DATE
8/28/2019

DATE
8/17/2000

DATE
8/28/2019

DATE
8/16/2000

SHEET
1 OF 2