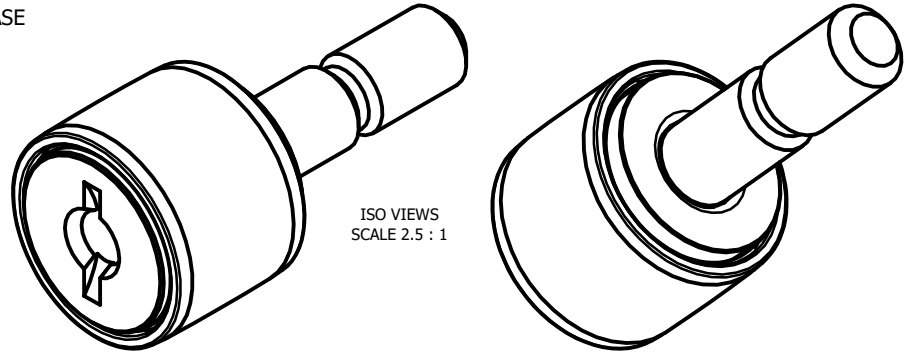
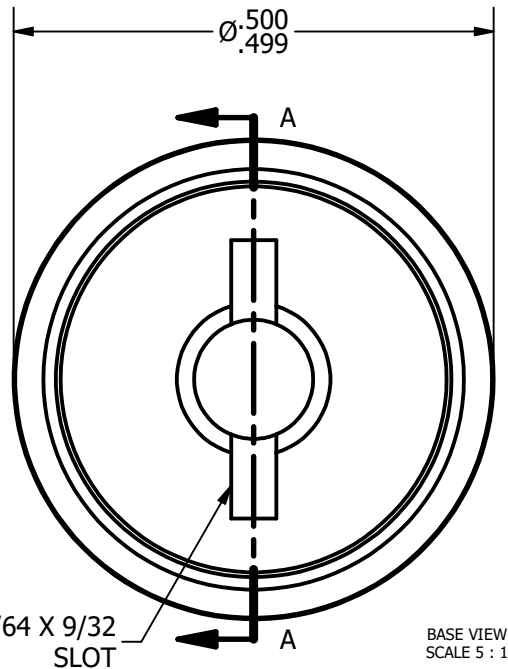


| LOAD RATINGS | |
|------------------------------|-----|
| RATING | Lbs |
| RADIAL BASIC DYNAMIC [C] | 680 |
| MAXIMUM STATIC CAPACITY [Co] | 790 |

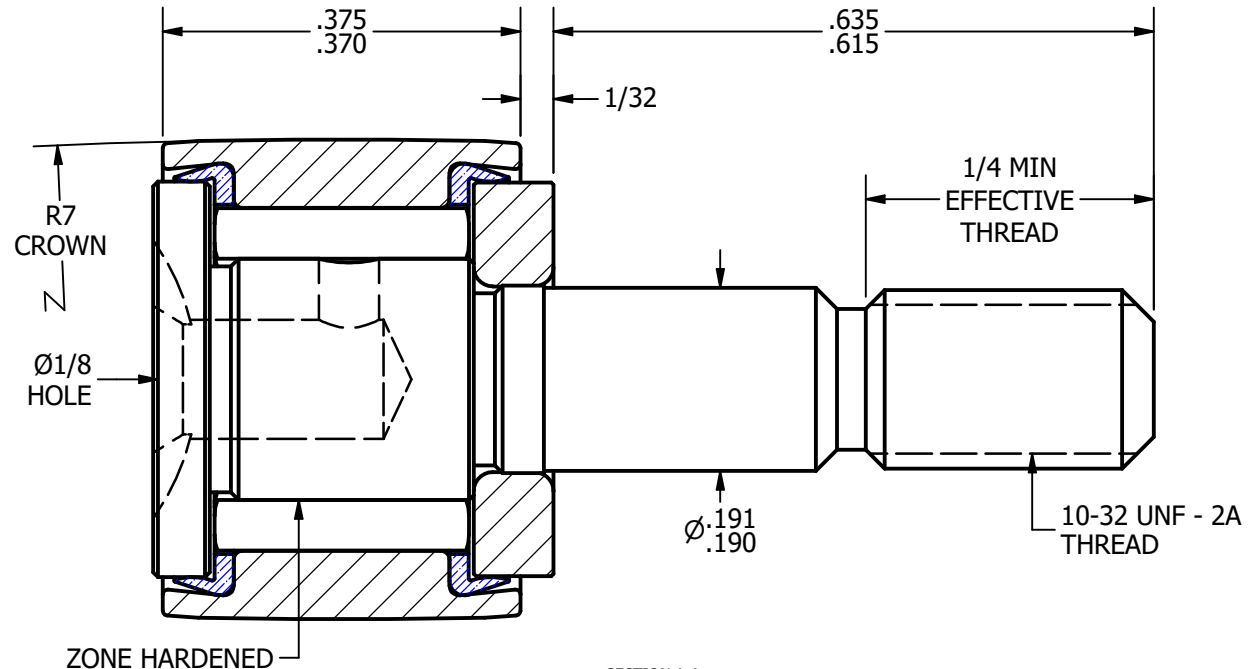
NOTES:
 1. BEARING IS PACKED WITH LITHIUM BASED #2 WEIGHT GREASE
 2. ALL EXPOSED SURFACES HAVE BLACK OXIDE



ISO VIEWS
 SCALE 2.5 : 1



BASE VIEW
 SCALE 5 : 1



SECTION A-A
 SCALE 5 : 1

MATERIAL NOTES:
 OUTER RACE - BEARING STEEL, HEAT TREATED
 STUD - BEARING STEEL, ZONE HARDENED
 NEEDLE ROLLER - BEARING STEEL, HEAT TREATED
 WASHER - COLD ROLLED STEEL, HEAT TREATED
 SEAL - SYNTHETIC

| | |
|----------------|--|
| CUSTOMER PART# | .XX = ± .01 .XXX = ± .005 .XXXX = ± .0005 ANGLES = ± 1' INCH [METRIC] FRACTION = ± 1/32 |
| CHANGE NOTE: | |

| | |
|--|---------------|
| CARTER MANUFACTURING IS NOT RESPONSIBLE FOR TYPOGRAPHICAL ERRORS | |
| REVISION | |
| C | AUTHOR. BY DB |
| REV. BY | DATE |
| SGW | 2/25/2011 |

| | | | | | |
|---------------------------------------|------------|-----------|--------------|----------|-------------|
| CARTER MANUFACTURING CO., INC. | | | | | |
| GRAND HAVEN, MICHIGAN 49417 | | | | | |
| PART NAME: ASSEMBLY | | | SHEET 1 OF 2 | | |
| | AUTHOR. BY | DRAWN BY | CHK'D BY | SALES | MATERIAL |
| | DB | EMD | MD | KR | NOTED |
| | DATE | DATE | DATE | DATE | DRAWING NO. |
| | 2/25/2011 | 6/13/2006 | 2/25/2011 | 3/8/2011 | CCNB-16-S |