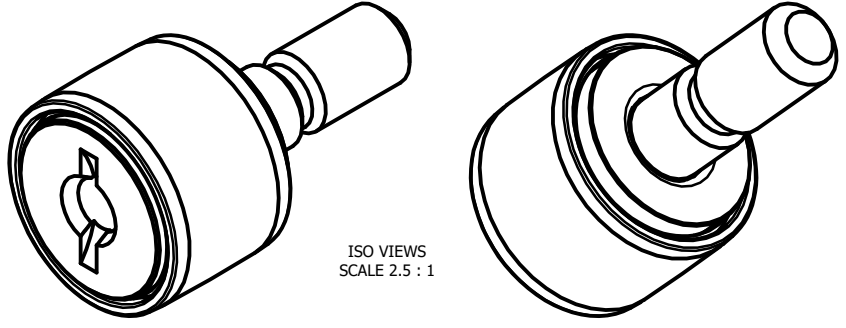
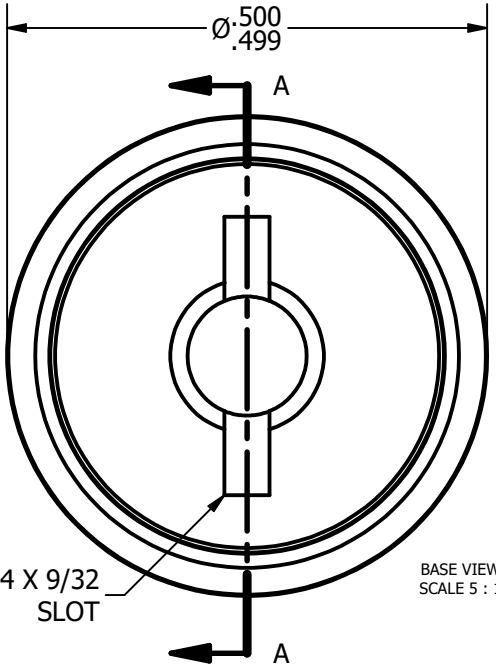


LOAD RATINGS	
RATING	Lbs
RADIAL BASIC DYNAMIC [C]	620
MAXIMUM STATIC CAPACITY [Co]	720

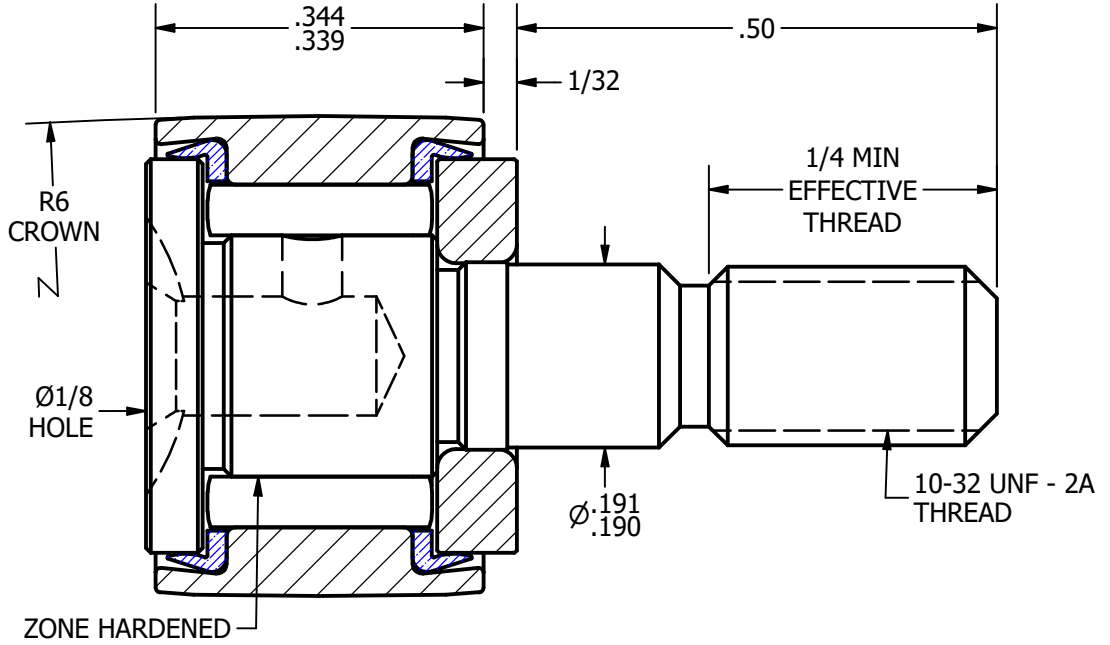
NOTES:
 1. BEARING IS PACKED WITH LITHIUM BASED #2 WEIGHT GREASE
 2. ALL EXPOSED SURFACES HAVE BLACK OXIDE



ISO VIEWS
 SCALE 2.5 : 1



BASE VIEW
 SCALE 5 : 1



SECTION A-A
 SCALE 5 : 1

MATERIAL NOTES:
 OUTER RACE - BEARING STEEL, HEAT TREATED
 STUD - BEARING STEEL, ZONE HARDENED
 NEEDLE ROLLER - BEARING STEEL, HEAT TREATED
 WASHER - COLD ROLLED STEEL, HEAT TREATED
 SEAL - SYNTHETIC

CUSTOMER PART#	.XX = ±.01 .XXX = ±.005 .XXXX = ±.0005 ANGLES = ± 1' INCH [METRIC] FRACTION = ± 1/32
CHANGE NOTE:	

CARTER MANUFACTURING IS NOT RESPONSIBLE FOR TYPOGRAPHICAL ERRORS

REVISION	
C	AUTHOR. BY
	DB
REV. BY	DATE
SGW	6/23/2011

CARTER MANUFACTURING CO., INC.				
GRAND HAVEN, MICHIGAN 49417				
PART NAME: ASSEMBLY			SHEET 1 OF 2	
SALES	MATERIAL	CHK'D BY	DRAWN BY	AUTHOR. BY
KR	NOTED	MD	JAF	DB
DATE	DATE	DATE	DATE	DATE
6/23/2011	6/23/2011	6/23/2011	6/13/2006	6/23/2011
	CCNB-16-NS			