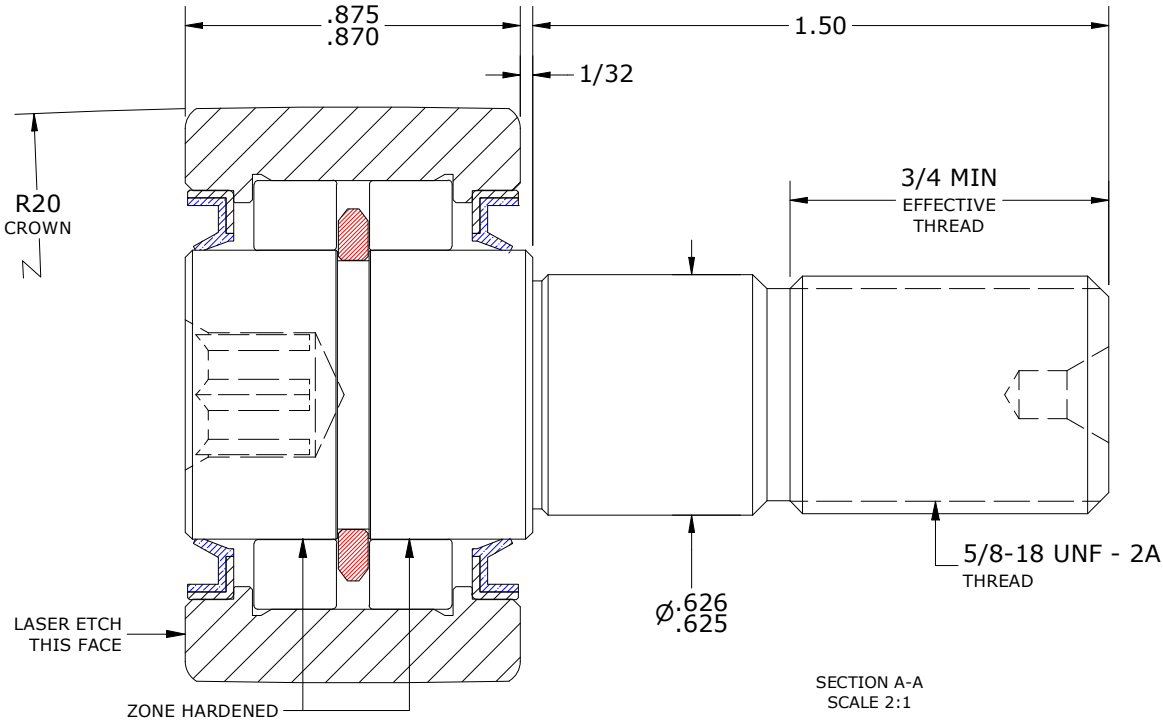
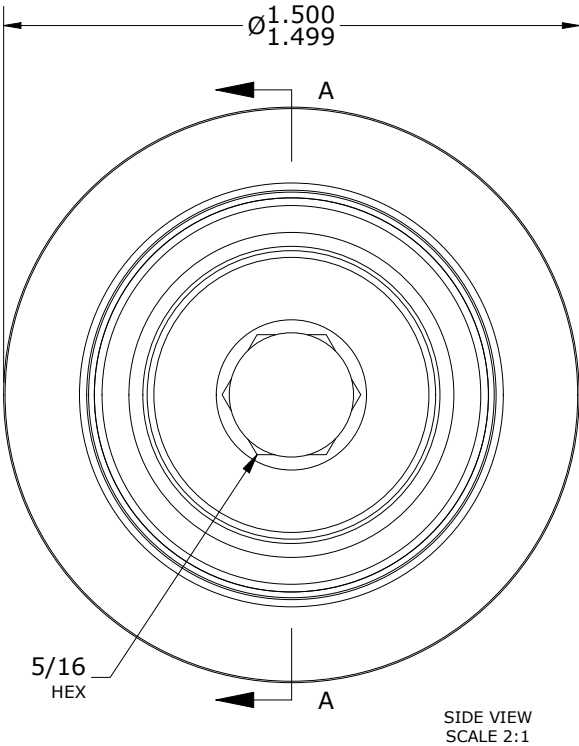


LOAD RATINGS		
RATING	lbf	Newtons
RADIAL BASIC DYNAMIC	6,200	27,579
MAXIMUM STATIC CAPACITY	7,000	31,138

RECOMMENDED MOUNTING HOLE Ø		
Limit	Inch	mm
MIN	.6248	15.870
MAX	.6255	15.888

MAXIMUM CLAMPING TORQUE**		
Thread Type	Inch Lbs	Nm
LUBRICATED	325	36.5

- NOTES:
1. BEARING IS PACKED WITH NLGI GRADE 2, LITHIUM BASED GREASE (UNLESS OTHERWISE SPECIFIED)
  2. ALL EXPOSED SURFACES AS MOUNTED HAVE BLACK OXIDE
  3. LIMITING SPEED:  
A. GREASE = 6,200 RPM
  4. CUSTOM LASER ETCHING UPON REQUEST



\*\*TORQUE SPECIFICATION IS BASED ON LUBRICATED THREADS, IF USING DRY THREADS DOUBLE TORQUE VALUE

MATERIAL NOTES:  OUTER RING - BEARING STEEL, HEAT TREATED STUD - BEARING STEEL, ZONE HARDENED NEEDLE ROLLER(S) - BEARING STEEL, HEAT TREATED RETAINING RING - BEARING STEEL, HEAT TREATED SEAL(S) - VB TYPE OIL SEAL	CUSTOMER PART#	XX = ± .01 XXX = ± .005 XXXX = ± .0005 ANGLES = ± 1° INCH [METRIC] FRACTION = ± 1/32	CARTER MANUFACTURING IS NOT RESPONSIBLE FOR TYPOGRAPHICAL ERRORS		<b>CARTER MANUFACTURING CO., INC.</b> GRAND HAVEN, MICHIGAN 49417			
	ENGINEERING CHANGE ORDER NOTE		REVISION		PART NAME: ASSEMBLY		PRODUCT TYPE: CDR	
			A	AUTHOR BY HG	DRAWN BY SGW	CHK'D BY MD	SALES NC	MATERIAL NOTED
			REVISION BY SGW	DATE 4/30/2021	DATE 4/26/2021	DATE 4/29/2021	DATE 4/30/2021	SHEET 1 OF 2