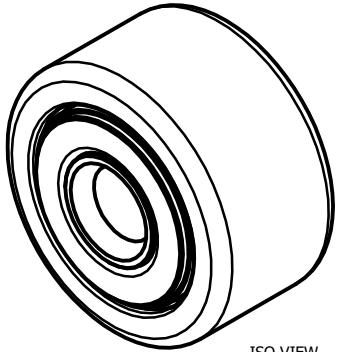
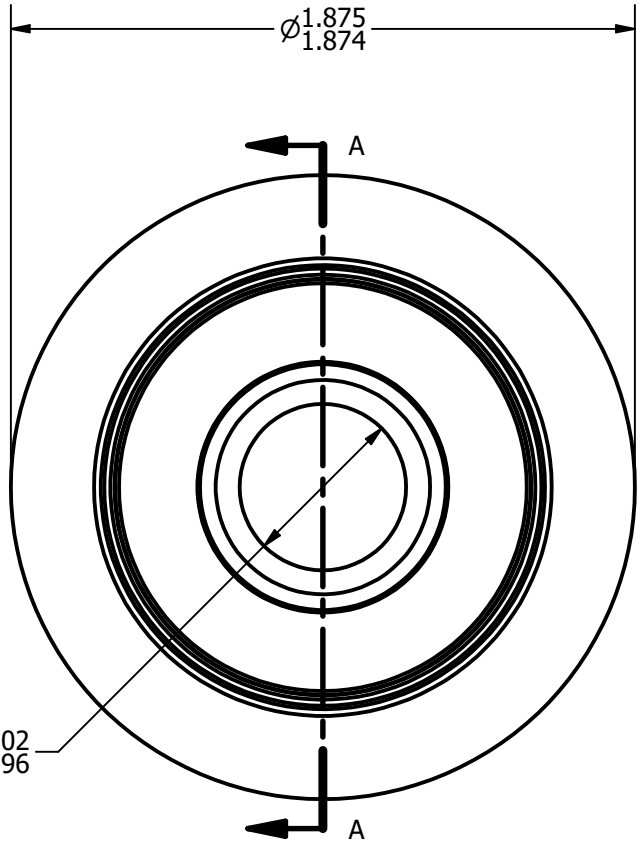


LOAD RATINGS	
RATING	Lbs
RADIAL BASIC DYNAMIC	6,385
MAXIMUM STATIC CAPACITY	15,840

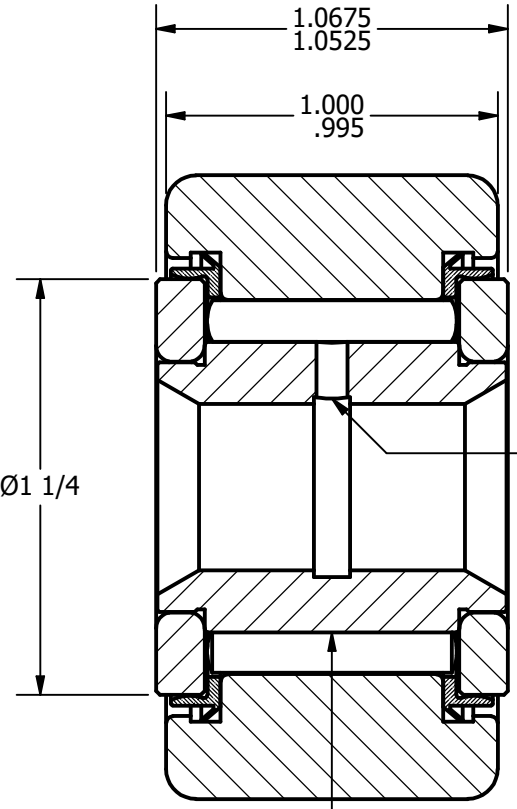
NOTES:
 1. BEARING IS PACKED WITH LITHIUM BASED #2 WEIGHT GREASE
 2. ALL EXPOSED SURFACES HAVE BLACK OXIDE



ISO VIEW
 SCALE .875 : 1



BASE VIEW
 SCALE 1.75 : 1



SECTION A-A
 SCALE 1.75 : 1

ZONE HARDENED

Ø3/32 LUBE

MATERIAL NOTES:
 OUTER RACE - BEARING STEEL, HEAT TREATED
 INNER RACE - BEARING STEEL, ZONE HARDENED
 NEEDLE ROLLERS - BEARING STEEL, HEAT TREATED
 WASHERS - COLD ROLLED STEEL, HEAT TREATED
 SEALS - SYNTHETIC

CUSTOMER PART#	.XX = ± .01 .XXX = ± .005 .XXXX = ± .0005 ANGLES = ± 1' INCH [METRIC] FRACTION = ± 1/32
CHANGE NOTE:	

CARTER MANUFACTURING IS NOT RESPONSIBLE FOR TYPOGRAPHICAL ERRORS	
REVISION	
B	AUTHOR. BY
	DB
REV. BY	DATE
MD	1/30/2013

CARTER MANUFACTURING CO., INC.					
GRAND HAVEN, MICHIGAN 49417					
PART NAME: ASSEMBLY			SHEET 1 OF 2		
	AUTHOR. BY	DRAWN BY	CHK'D BY	SALES	MATERIAL
	DB	GJP	SGW	KPR	NOTED
	DATE	DATE	DATE	DATE	DRAWING NO.
	1/30/2013	11/17/1999	1/30/2013	11/15/1999	YNB-60-S