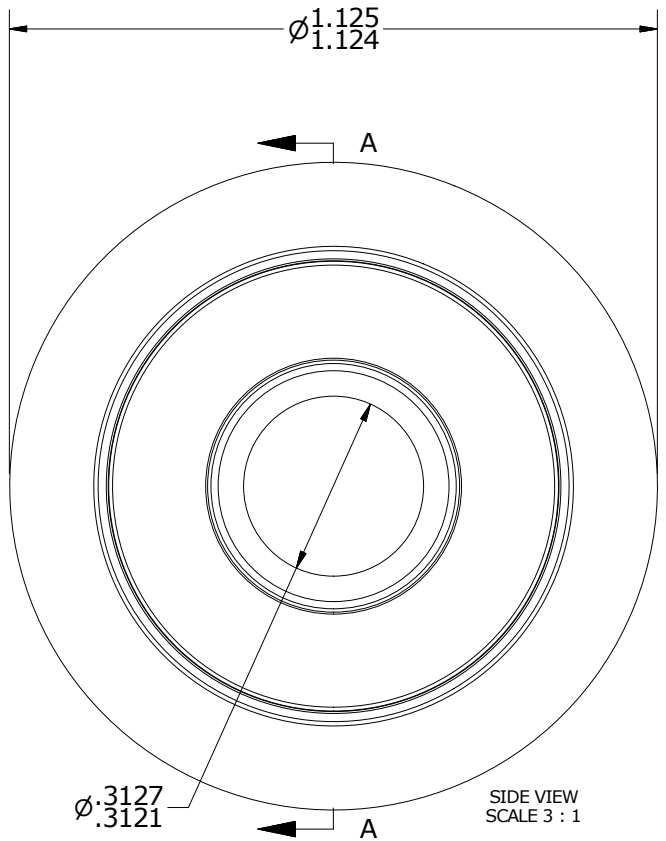
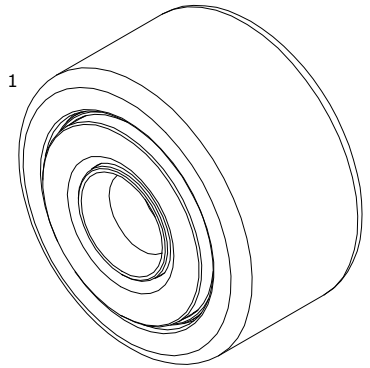


LOAD RATINGS		
RATING	Lbs	Newton
RADIAL BASIC DYNAMIC	2,225	9,897
MAXIMUM STATIC CAPACITY	6,120	27,223

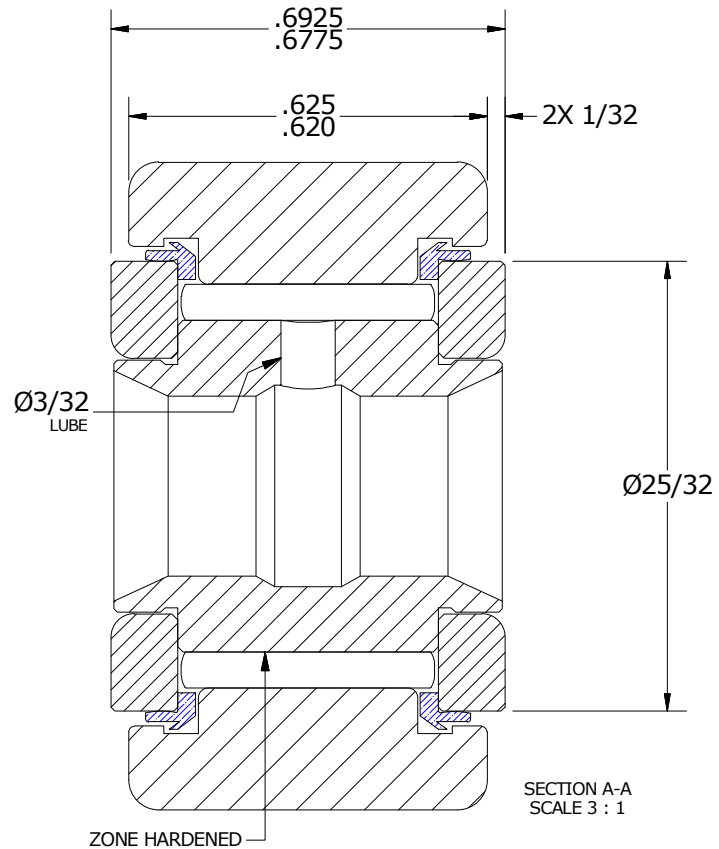
NOTES:
 1. BEARING IS PACKED WITH NLGI GRADE 2, LITHIUM BASED GREASE (UNLESS OTHERWISE SPECIFIED)
 2. ALL EXPOSED SURFACES HAVE BLACK OXIDE

MS NO. _____ NSN NO. _____ DRAWING NO. YNB-36-S

ISO VIEW
SCALE 1.500 : 1



SIDE VIEW
SCALE 3 : 1



SECTION A-A
SCALE 3 : 1

Recommended Shaft Fits		
Fit Type - Dimension	\varnothing (Inch)	\varnothing (mm)
Push - Max	.3122	7.9300
Push - Min	.3118	7.9197
Drive - Max	.3128	7.9451
Drive - Min	.3124	7.9350
Press - Max	.3130	7.9502
Press - Min	.3126	7.9400

MATERIAL NOTES:

OUTER RING - BEARING STEEL, HEAT TREATED
 INNER RING - BEARING STEEL, ZONE HARDENED
 NEEDLE ROLLER(S) - BEARING STEEL, HEAT TREATED
 WASHER(S) - BEARING STEEL, HEAT TREATED
 SEAL(S) - SYNTHETIC

CUSTOMER PART# _____
 XX = $\pm .01$
 XXX = $\pm .005$
 XXXX = $\pm .0005$
 ANGLES = $\pm 1'$
 INCH [METRIC]
 FRACTION = $\pm 1/32$

CARTER MANUFACTURING IS NOT RESPONSIBLE FOR TYPOGRAPHICAL ERRORS

CARTER MANUFACTURING CO., INC.
 GRAND HAVEN, MICHIGAN 49417

ENGINEERING CHANGE ORDER NOTE

D

REVISION BY: SGW
 DATE: 8/22/2018

REVISION

AUTHOR BY: HG
 DATE: 8/22/2018

PART NAME: ASSEMBLY
 PRODUCT TYPE: CNB

REVISION	AUTHOR BY	DRAWN BY	CHK'D BY	SALES	MATERIAL
D	HG	GJP	MD	KR	NOTED
REVISION BY	DATE	DATE	DATE	DATE	SHEET
SGW	8/22/2018	11/17/1999	8/21/2018	8/21/2018	1 OF 2