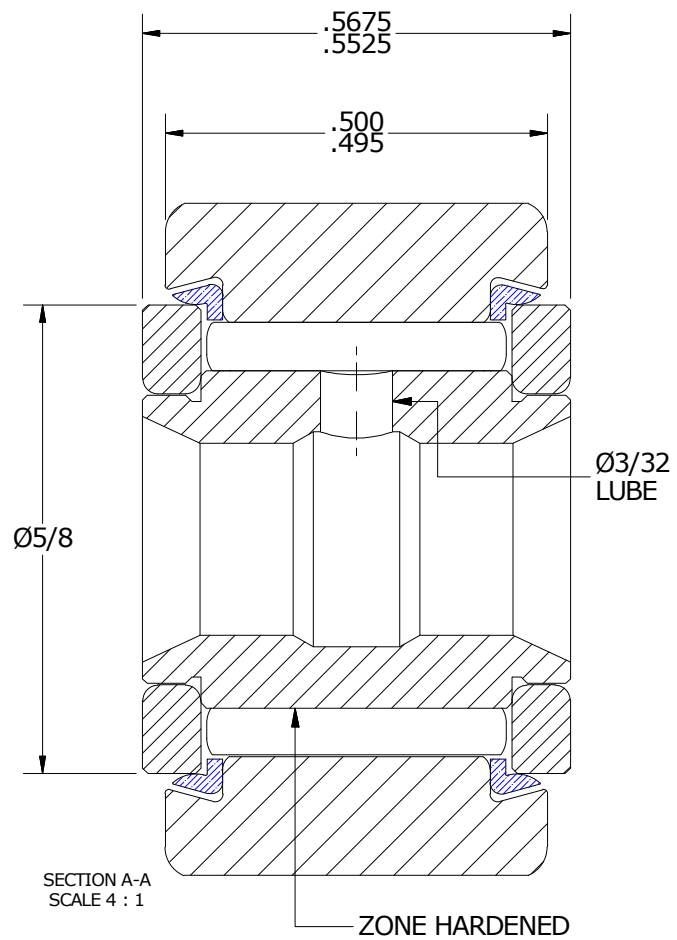
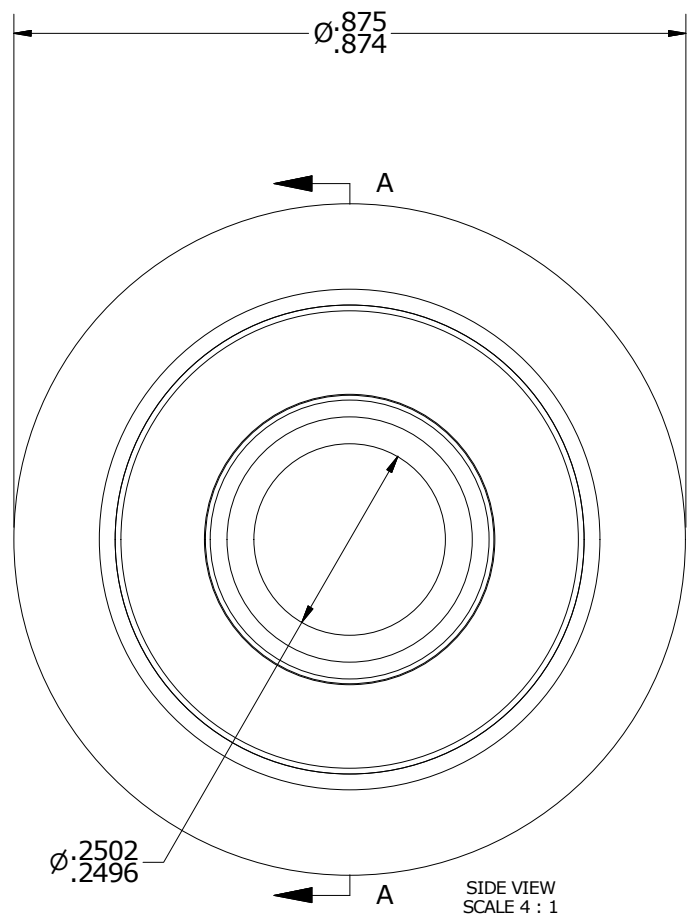
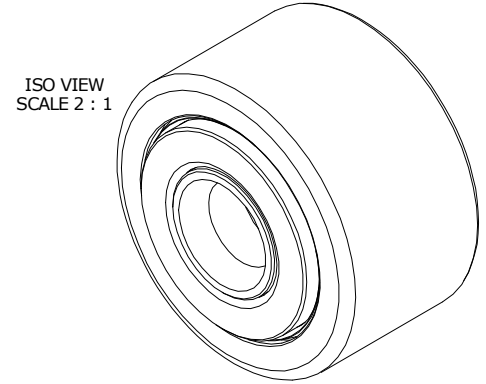


| LOAD RATINGS            |       |         |
|-------------------------|-------|---------|
| RATING                  | lbf   | Newtons |
| RADIAL BASIC DYNAMIC    | 1,660 | 7,384   |
| MAXIMUM STATIC CAPACITY | 4,130 | 18,371  |

- NOTES:
1. BEARING IS PACKED WITH NLGI GRADE 2, LITHIUM BASED GREASE (UNLESS OTHERWISE SPECIFIED)
  2. ALL EXPOSED STEEL SURFACES HAVE BLACK OXIDE
  3. LIMITING SPEED:  
A. GREASE = 5,400 RPM



| Recommended Shaft Fits |          |        |
|------------------------|----------|--------|
| Fit Type - Dimension   | Ø (Inch) | Ø (mm) |
| Push - Max             | .2497    | 6.3424 |
| Push - Min             | .2493    | 6.3322 |
| Drive - Max            | .2503    | 6.3576 |
| Drive - Min            | .2499    | 6.3475 |
| Press - Max            | .2505    | 6.3627 |
| Press - Min            | .2501    | 6.3525 |

MATERIAL NOTES:

OUTER RING - BEARING STEEL, HEAT TREATED  
 INNER RING - BEARING STEEL, ZONE HARDENED  
 NEEDLE ROLLER(S) - BEARING STEEL, HEAT TREATED  
 WASHER(S) - BEARING STEEL, HEAT TREATED  
 SEAL(S) - SYNTHETIC

|                               |   |
|-------------------------------|---|
| CUSTOMER PART#                | XX = ± .01<br>XXX = ± .005<br>XXXX = ± .0005<br>ANGLES = ± 1'<br>INCH [METRIC]<br>FRACTION = ± 1/32 |
| ENGINEERING CHANGE ORDER NOTE |   |

|  |                   |
|--|-------------------|
| CARTER MANUFACTURING IS NOT RESPONSIBLE FOR TYPOGRAPHICAL ERRORS |                   |
| REVISION   |                   |
| <b>B</b>   | AUTHOR BY<br>HG   |
| REVISION BY<br>SGW   | DATE<br>4/27/2017 |

|  |                   |                   |                   |                 |  |
|--|-------------------|-------------------|-------------------|-----------------|--|
| <b>CARTER MANUFACTURING CO., INC.</b><br>GRAND HAVEN, MICHIGAN 49417 |                   |                   |                   |                 |  |
| PART NAME: ASSEMBLY  |                   |                   |                   |                 |  |
| DRAWN BY<br>JGV  | CHK'D BY<br>MD    | SALES<br>KR       | MATERIAL<br>NOTED |                 |  |
| DATE<br>1/15/2003  | DATE<br>4/27/2017 | DATE<br>4/27/2017 | DATE<br>4/27/2017 | SHEET<br>1 OF 2 |  |