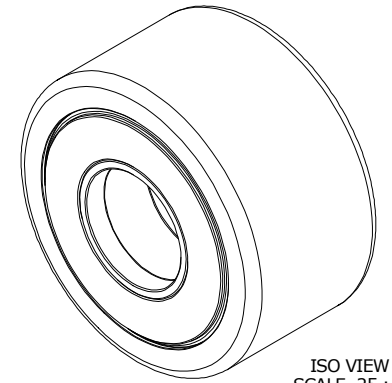


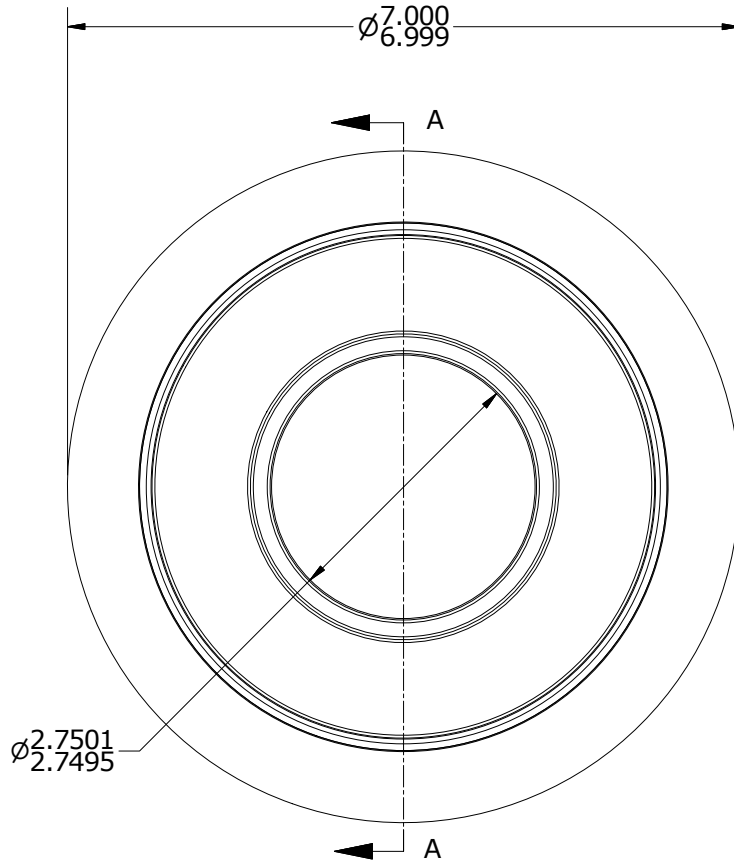
LOAD RATINGS	
RATING	Lbs
RADIAL BASIC DYNAMIC	75,380
MAXIMUM STATIC CAPACITY	213,860

- NOTES:
1. BEARING IS PACKED WITH NLGI GRADE 2, LITHIUM BASED GREASE (UNLESS OTHERWISE SPECIFIED)
 2. ALL EXPOSED SURFACES HAVE BLACK OXIDE

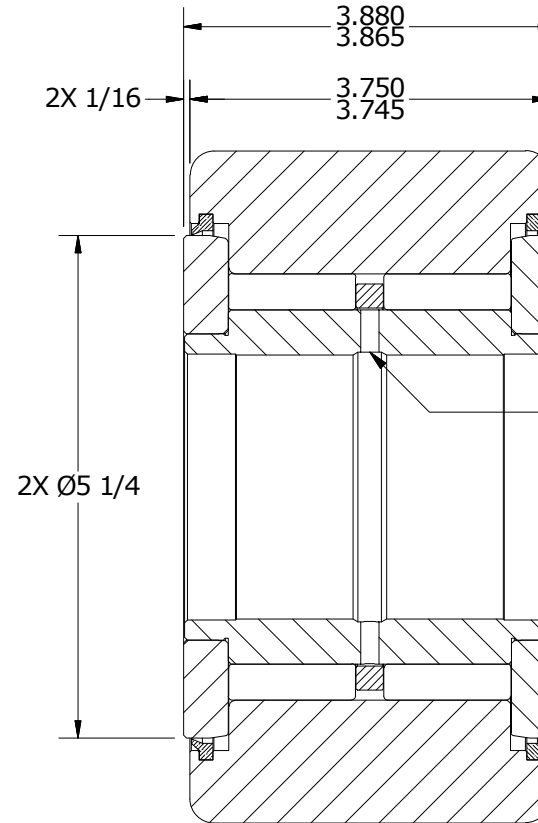
MS NO.	NSN NO.	DRAWING NO.	YNB-224-S
--------	---------	-------------	-----------



ISO VIEW
SCALE .25 : 1



END VIEW
SCALE .5 : 1



SECTION A-A
SCALE .5 : 1

MATERIAL NOTES:

- OUTER RACE - BEARING STEEL, HEAT TREATED
- INNER RACE - BEARING STEEL, HEAT TREATED
- NEEDLE ROLLERS - BEARING STEEL, HEAT TREATED
- SPACER - BEARING STEEL, HEAT TREATED
- WASHERS - STEEL, HEAT TREATED
- SEALS - SYNTHETIC

CUSTOMER PART#

XX = ± .01
XXX = ± .005
XXXX = ± .0005
ANGLES = ± 1'
INCH [METRIC]
FRACTION = ± 1/32

CARTER MANUFACTURING IS NOT RESPONSIBLE FOR TYPOGRAPHICAL ERRORS

CARTER MANUFACTURING CO., INC.

GRAND HAVEN, MICHIGAN 49417

ENGINEERING CHANGE ORDER NOTE

REVISION

PART NAME: ASSEMBLY

C

AUTHOR BY
HG

DRAWN BY
RAM

CHK'D BY
SGW

SALES
KPR

MATERIAL
NOTED

REVISION BY
MD

DATE
11/2/2017

DATE
6/10/1997

DATE
11/1/2017

DATE
8/7/2008

SHEET
1 OF 2