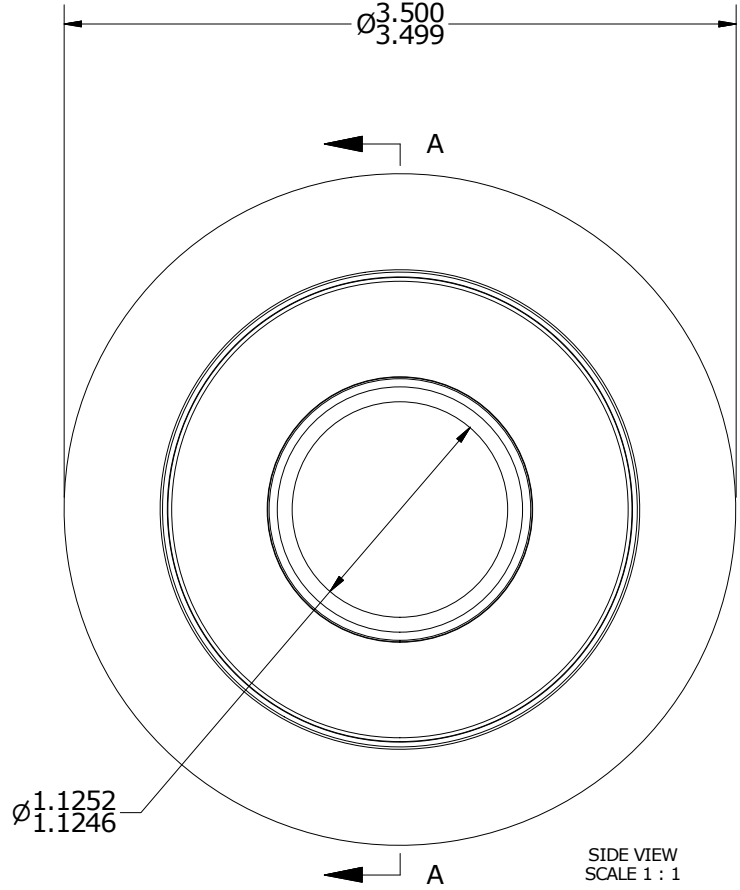
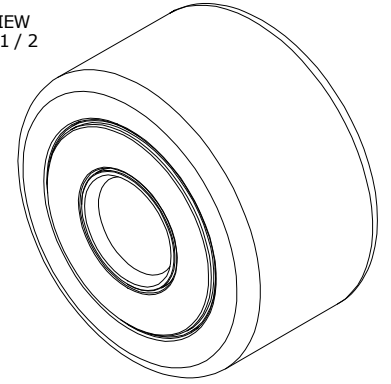


LOAD RATINGS		
RATING	lbf	Newtons
RADIAL BASIC DYNAMIC	22,800	101,419
MAXIMUM STATIC CAPACITY	63,250	281,350

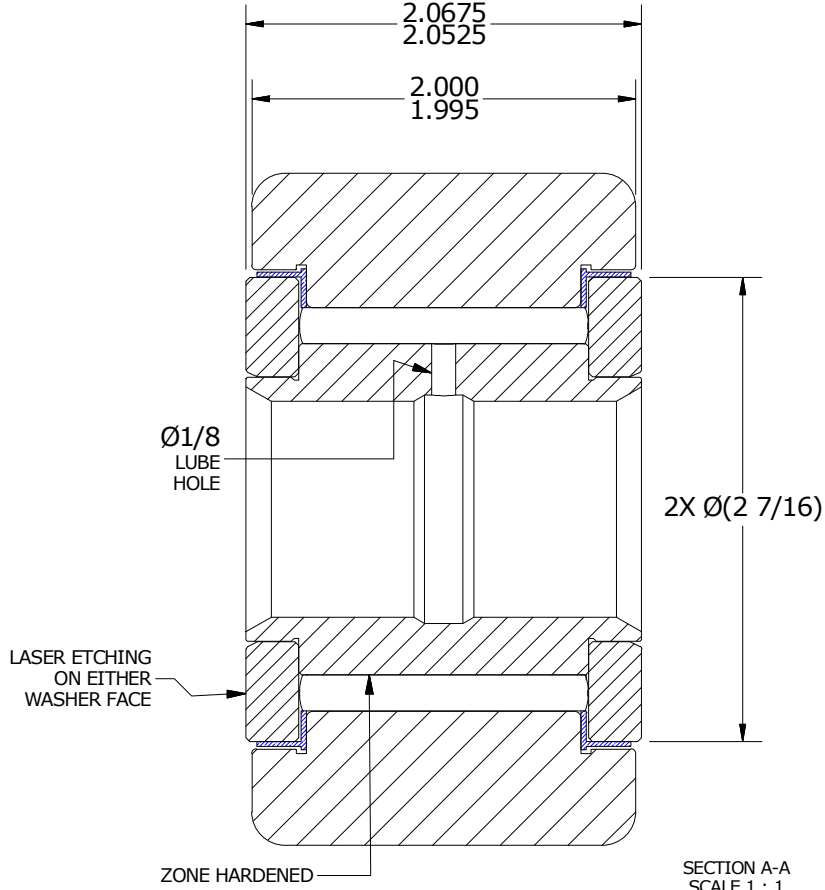
MS NO. \_\_\_\_\_ NSN NO. \_\_\_\_\_ DRAWING NO. **YNB-112-S**

- NOTES:
1. BEARING IS PACKED WITH NLGI GRADE 2, LITHIUM BASED GREASE (UNLESS OTHERWISE SPECIFIED)
  2. ALL EXPOSED SURFACES AS MOUNTED HAVE BLACK OXIDE
  3. LIMITING SPEED:
    - A. GREASE = 820 RPM
  4. CUSTOM LASER ETCHING UPON REQUEST

ISO VIEW  
SCALE 1 / 2



SIDE VIEW  
SCALE 1 : 1



SECTION A-A  
SCALE 1 : 1

Recommended Shaft Fits		
Fit Type - Dimension	$\varnothing$ (Inch)	$\varnothing$ (mm)
Push - Max	1.1246	28.5684
Push - Min	1.1241	28.5521
Drive - Max	1.1254	28.5598
Drive - Min	1.1249	28.5725
Press - Max	1.1258	28.5953
Press - Min	1.1253	28.5826

MATERIAL NOTES:

OUTER RING - BEARING STEEL, HEAT TREATED  
 INNER RING - BEARING STEEL, ZONE HARDENED  
 NEEDLE ROLLER(S) - BEARING STEEL, HEAT TREATED  
 WASHER(S) - BEARING STEEL, HEAT TREATED  
 SEAL(S) - SYNTHETIC

CUSTOMER PART#	XX = $\pm .01$ XXX = $\pm .005$ XXXX = $\pm .0005$ ANGLES = $\pm 1'$ INCH [METRIC] FRACTION = $\pm 1/32$
ENGINEERING CHANGE ORDER NOTE	

CARTER MANUFACTURING IS NOT RESPONSIBLE FOR TYPOGRAPHICAL ERRORS	
REVISION	
<b>B</b>	AUTHOR BY HG
REVISION BY SGW	DATE 3/27/2015

<b>CARTER MANUFACTURING CO., INC.</b> GRAND HAVEN, MICHIGAN 49417				PART NAME: ASSEMBLY		PRODUCT TYPE: CNB	
DRAWN BY AJH	CHK'D BY MD	SALES KPR	MATERIAL NOTED	DATE 8/20/2001	DATE 3/27/2015	DATE 8/19/2001	SHEET 1 OF 2