

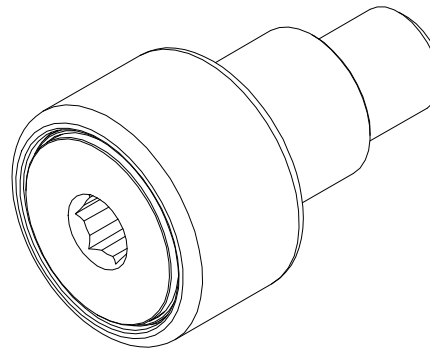
LOAD RATINGS	
RATING	Lbs
RADIAL BASIC DYNAMIC	1,800
MAXIMUM STATIC CAPACITY	2,040

RECOMMENDED MOUNTING HOLE Ø		
Limit	Inch	mm
MIN	.627	15.926
MAX	.629	15.977

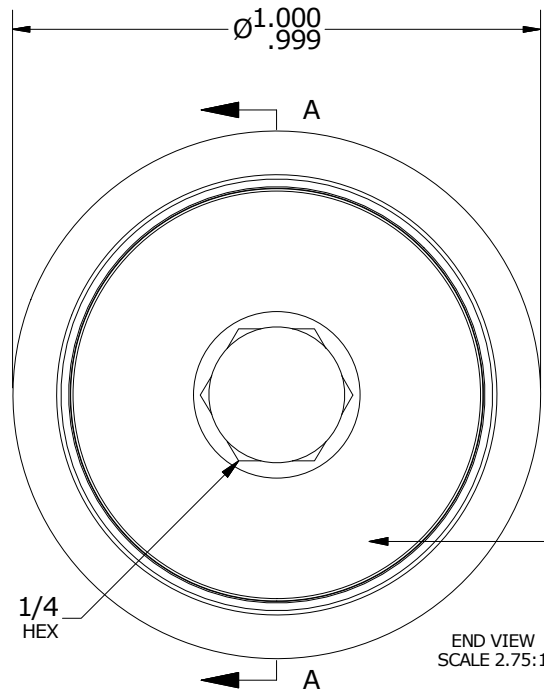
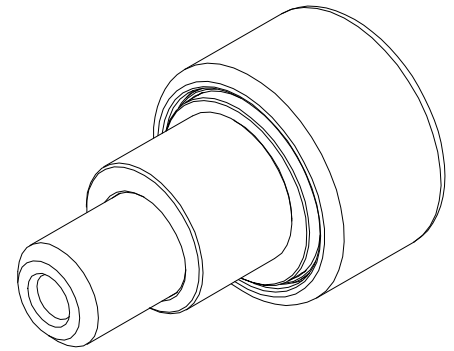
MAXIMUM CLAMPING TORQUE		
Thread Type	Inch Lbs	Nm
DRY	250	28
LUBRICATED	125	14

- NOTES:
- BEARING COMES PACKED WITH CARTER STANDARD FOOD GRADE H1, NLGI 2 GREASE(UNLESS OTHERWISE SPECIFIED)
 - LIMITING SPEED:
 - GREASE = 4,800 RPM
 - CUSTOM LASER ETCHING UPON REQUEST

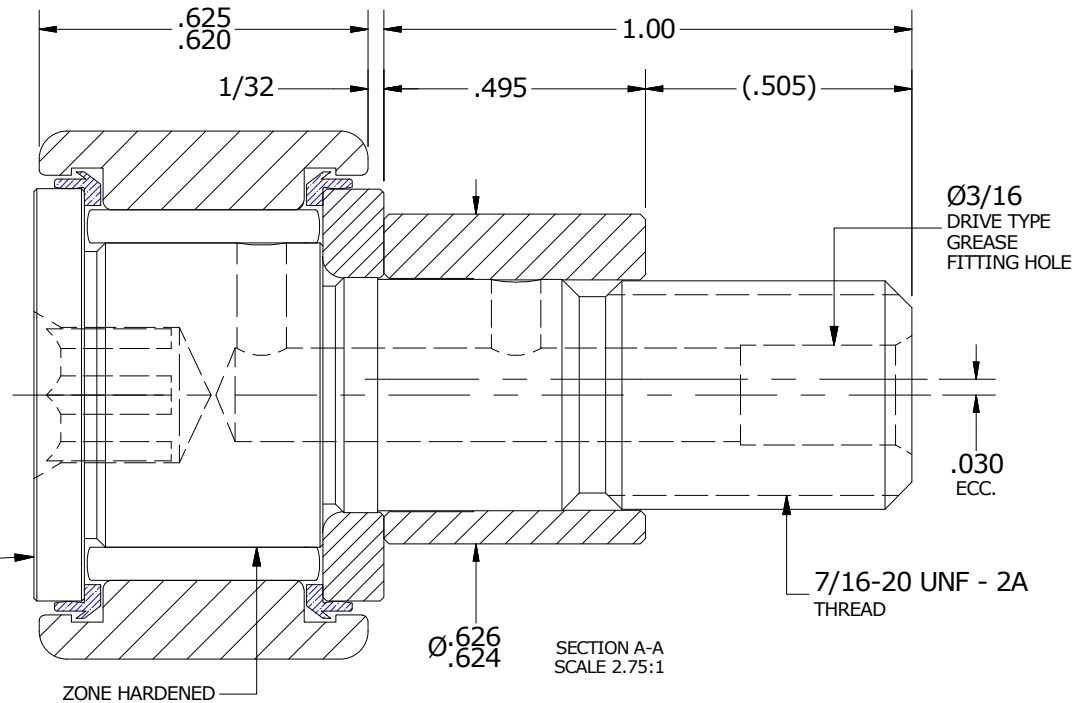
MS NO. _____ NSN NO. _____ DRAWING NO. _____



ISO VIEWS
SCALE 1.375:1



LASER ETCHING
ON THIS
FACE



MATERIAL NOTES:

- OUTER RING - 440C STAINLESS STEEL, HEAT TREATED
- STUD - 440C STAINLESS STEEL, ZONE HARDENED
- WASHER - 440C STAINLESS STEEL, HEAT TREATED
- NEEDLE ROLLER(S) - 440C STAINLESS STEEL, HEAT TREATED
- ECCENTRIC SLEEVE - 300 SERIES STAINLESS STEEL
- SEAL(S) - SYNTHETIC

CUSTOMER PART#

XX = ± .01
XXX = ± .005
XXXX = ± .0005
ANGLES = ± 1'
INCH [METRIC]
FRACTION = ± 1/32

CARTER MANUFACTURING IS
NOT RESPONSIBLE FOR
TYPOGRAPHICAL ERRORS

CARTER MANUFACTURING CO., INC.

GRAND HAVEN, MICHIGAN 49417

ENGINEERING CHANGE ORDER NOTE

REVISION

PART NAME: ASSEMBLY

PRODUCT TYPE: SCE

B

AUTHOR BY
DB

DRAWN BY
GJP

CHK'D BY
MD

SALES
KR

MATERIAL
NOTED

REVISION BY
SGW

DATE
7/8/2013

DATE
3/15/2000

DATE
7/8/2013

DATE
7/11/2013

SHEET
1 OF 2