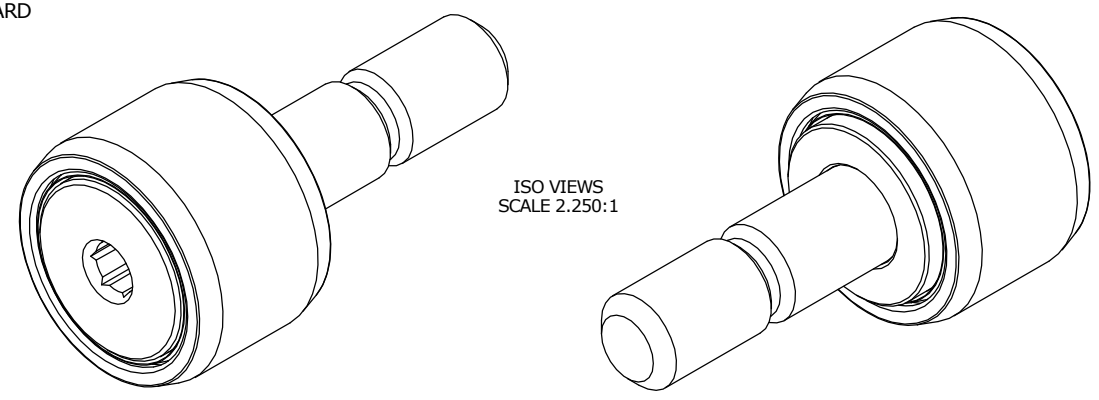
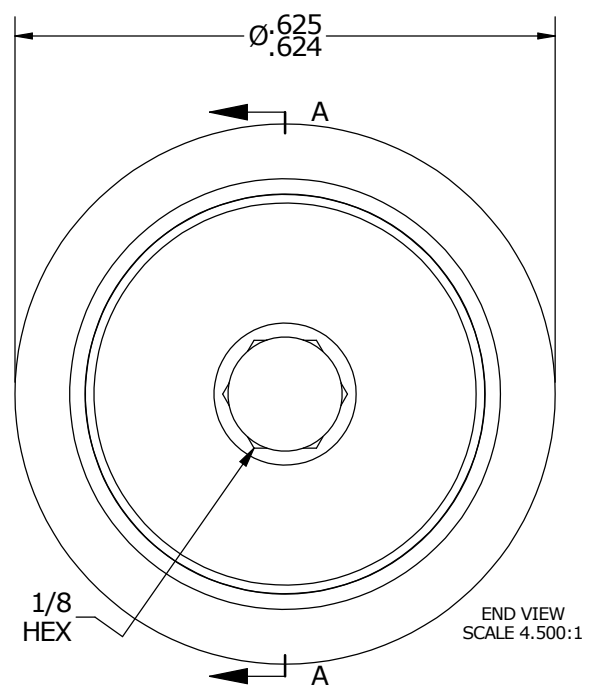


| LOAD RATINGS | |
|-------------------------|-----|
| RATING | Lbs |
| RADIAL BASIC DYNAMIC | 796 |
| MAXIMUM STATIC CAPACITY | 972 |

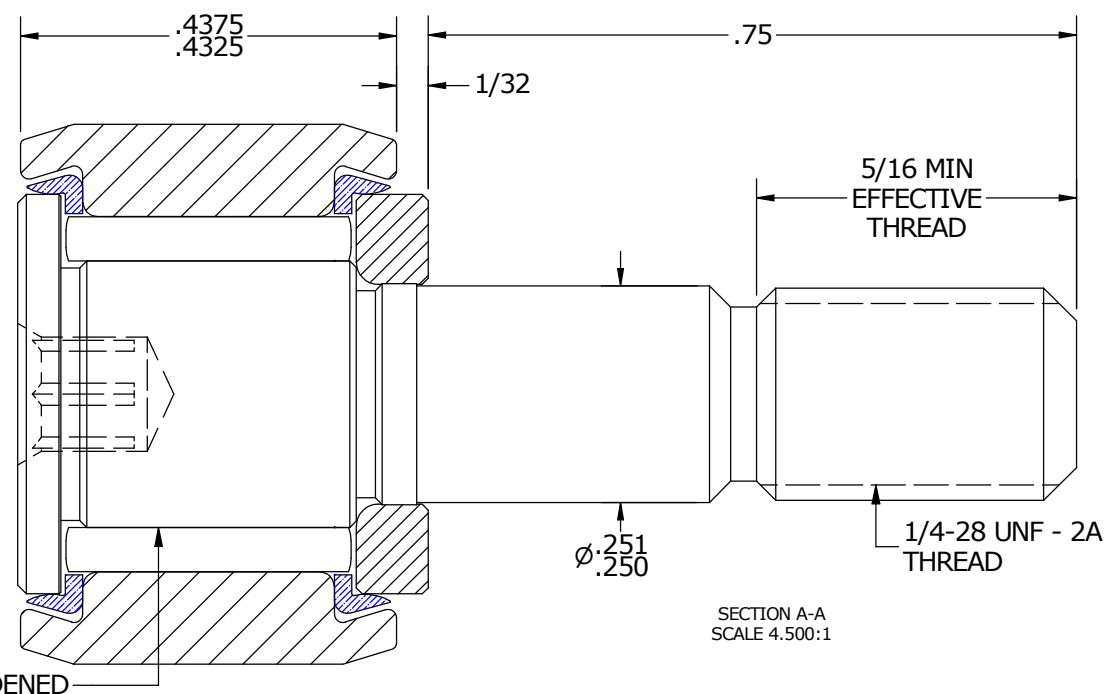
NOTES:
 1. BEARING COMES PACKED WITH CARTER STANDARD FOOD GRADE H1, NLGI 2 GREASE



ISO VIEWS
SCALE 2.250:1



END VIEW
SCALE 4.500:1



SECTION A-A
SCALE 4.500:1

MATERIAL NOTES:
 OUTER RACE - 440C STAINLESS STEEL, HEAT TREATED
 STUD - 440C STAINLESS STEEL, ZONE HARDENED
 WASHER - 440C STAINLESS STEEL, HEAT TREATED
 NEEDLE ROLLER - 440C STAINLESS STEEL, HEAT TREATED
 SEAL - SYNTHETIC

CUSTOMER PART# _____
 XX = ± .01
 XXX = ± .005
 XXXX = ± .0005
 ANGLES = ± 1'
 INCH [METRIC]
 FRACTION = ± 1/32

CARTER MANUFACTURING IS NOT RESPONSIBLE FOR TYPOGRAPHICAL ERRORS

CARTER MANUFACTURING CO., INC.
 GRAND HAVEN, MICHIGAN 49417

ENGINEERING CHANGE ORDER NOTE

| REVISION | | PART NAME: ASSEMBLY | | | |
|-------------|-----------|---------------------|-----------|-----------|----------|
| REVISION BY | DATE | DRAWN BY | CHK'D BY | SALES | MATERIAL |
| C | HG | GJP | MD | KR | NOTED |
| SGW | 1/22/2015 | 10/11/1999 | 1/22/2015 | 1/22/2015 | SHEET |
| | | | | | 1 OF 2 |