

| ISO/ABMA BASIC LOAD RATINGS | | |
|-----------------------------|---------|--------|
| Rating | Newtons | Lbs |
| DYNAMIC | 30,790 | 6,922 |
| STATIC | 57,670 | 12,965 |

| TRACK ROLLER LOAD RATINGS | | |
|---------------------------|---------|--------|
| RATING | Newtons | Lbs |
| DYNAMIC | 25,690 | 5,775 |
| STATIC | 46,700 | 10,499 |

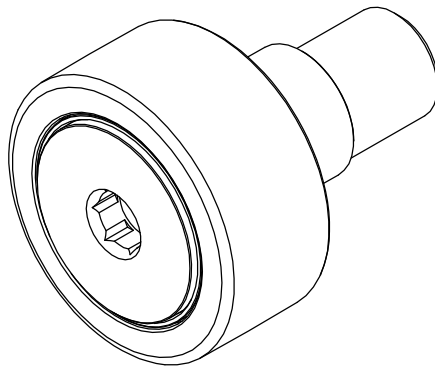
| MAXIMUM CLAMPING TORQUE | | |
|-------------------------|-----|----------|
| Thread Type | Nm | Inch Lbs |
| DRY | 118 | 1,044 |
| LUBRICATED | 59 | 522 |

| RECOMMENDED MOUNTING HOLE Ø | | |
|-----------------------------|--------|-------|
| Limit | mm | Inch |
| MIN | 24.050 | .9468 |
| MAX | 24.075 | .9478 |

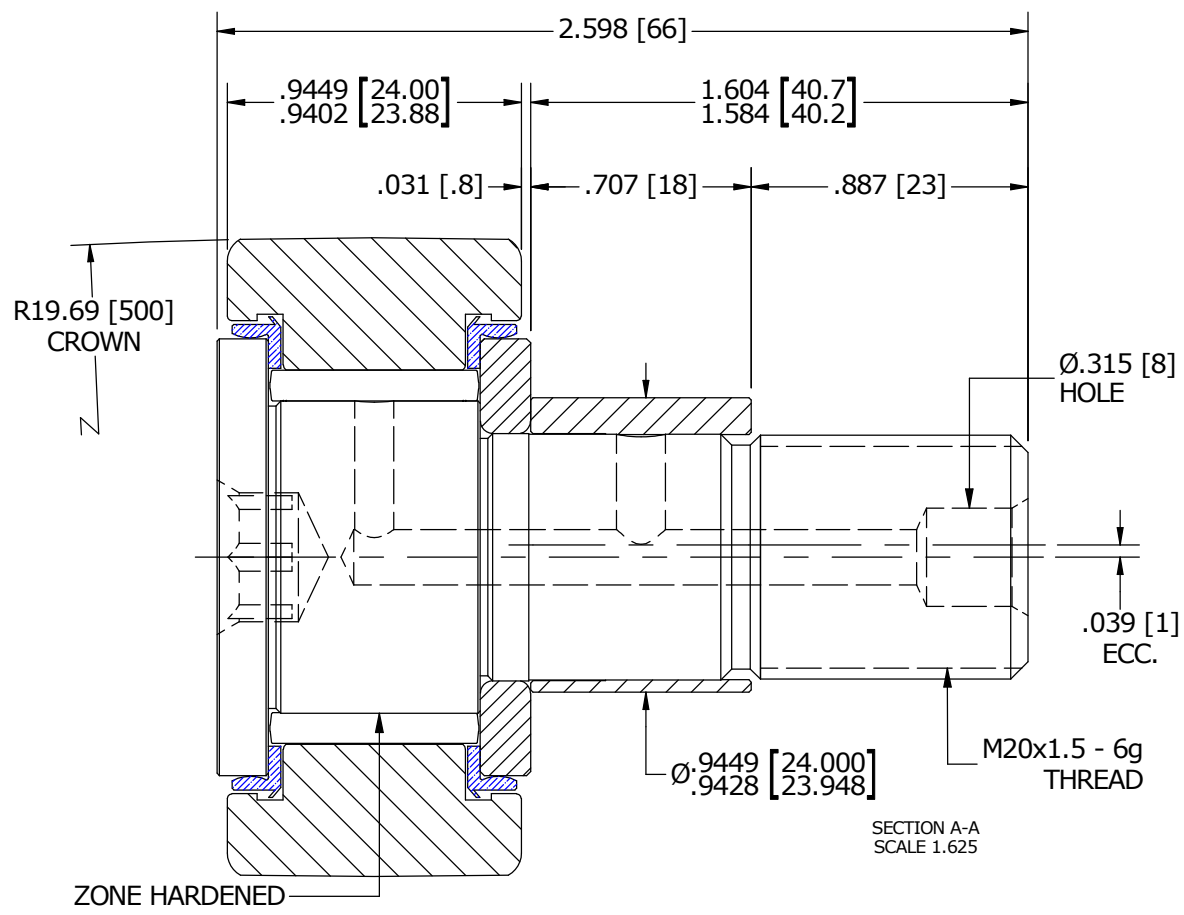
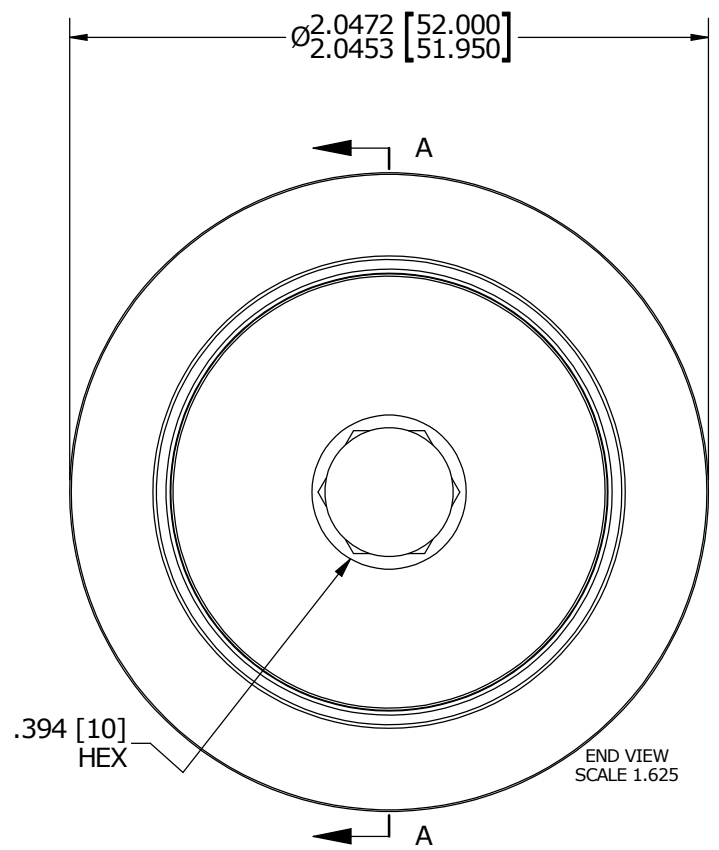
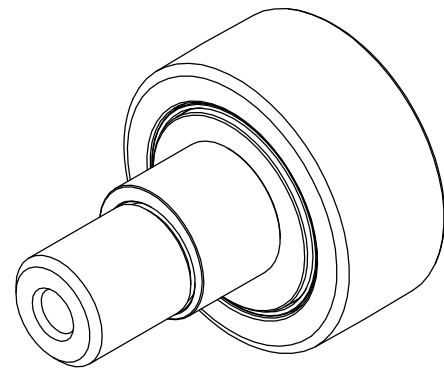
NOTES:

- BEARING IS PACKED WITH NLGI GRADE 2, LITHIUM BASED GREASE (UNLESS OTHERWISE SPECIFIED)
- ALL EXPOSED STEEL SURFACES HAVE BLACK OXIDE
- LIMITING SPEEDS:
 - GREASE = 2,600 RPM
 - OIL = 3,400 RPM

MS NO. _____ NSN NO. _____ DRAWING NO. MCNBE-52-SB



ISO VIEWS
SCALE .813:1



MATERIAL NOTES:

- OUTER RACE - BEARING STEEL, HEAT TREATED
- STUD - BEARING STEEL, ZONE HARDENED
- NEEDLE ROLLER - BEARING STEEL, HEAT TREATED
- WASHER - COLD ROLLED STEEL, HEAT TREATED
- ECCENTRIC SLEEVE - COLD ROLLED STEEL
- SEAL - SYNTHETIC

| | |
|--------------------------------------|---|
| CUSTOMER PART# | XX = ± .01 XXX = ± .005 XXXX = ± .0005 ANGLES = ± 1' INCH [METRIC] FRACTION = ± 1/32 |
| <i>ENGINEERING CHANGE ORDER NOTE</i> | |

CARTER MANUFACTURING IS NOT RESPONSIBLE FOR TYPOGRAPHICAL ERRORS

CARTER MANUFACTURING CO., INC.
GRAND HAVEN, MICHIGAN 49417

| REVISION | | PART NAME: ASSEMBLY | | | |
|-------------|------------|---------------------|------------|------------|----------|
| REVISION BY | DATE | DRAWN BY | CHK'D BY | SALES | MATERIAL |
| B | HG | SGW | MD | KR | NOTED |
| SGW | 12/12/2015 | 3/27/2009 | 11/23/2015 | 11/16/2015 | SHEET |
| | | | | | 1 OF 2 |