

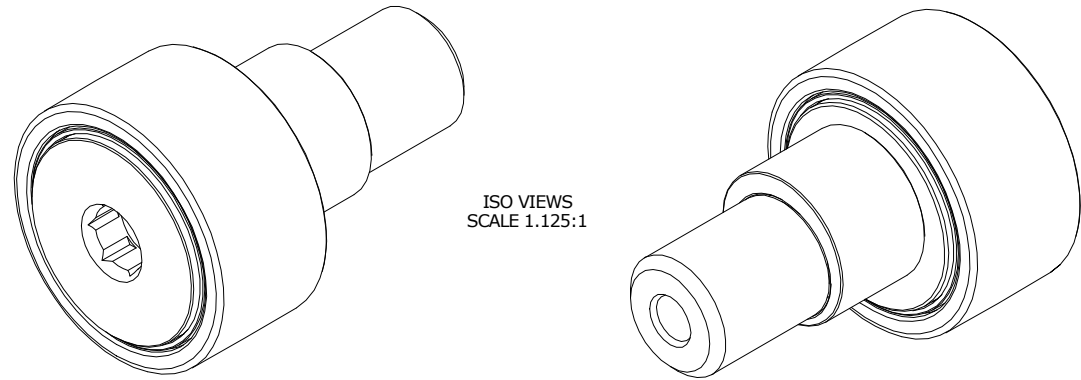
ISO/ABMA BASIC LOAD RATINGS		
Rating	Newtons	Lbs
DYNAMIC	20,300	4,564
STATIC	34,130	7,673

TRACK ROLLER LOAD RATINGS		
RATING	Newtons	Lbs
DYNAMIC	16,970	3,815
STATIC	28,500	6,407

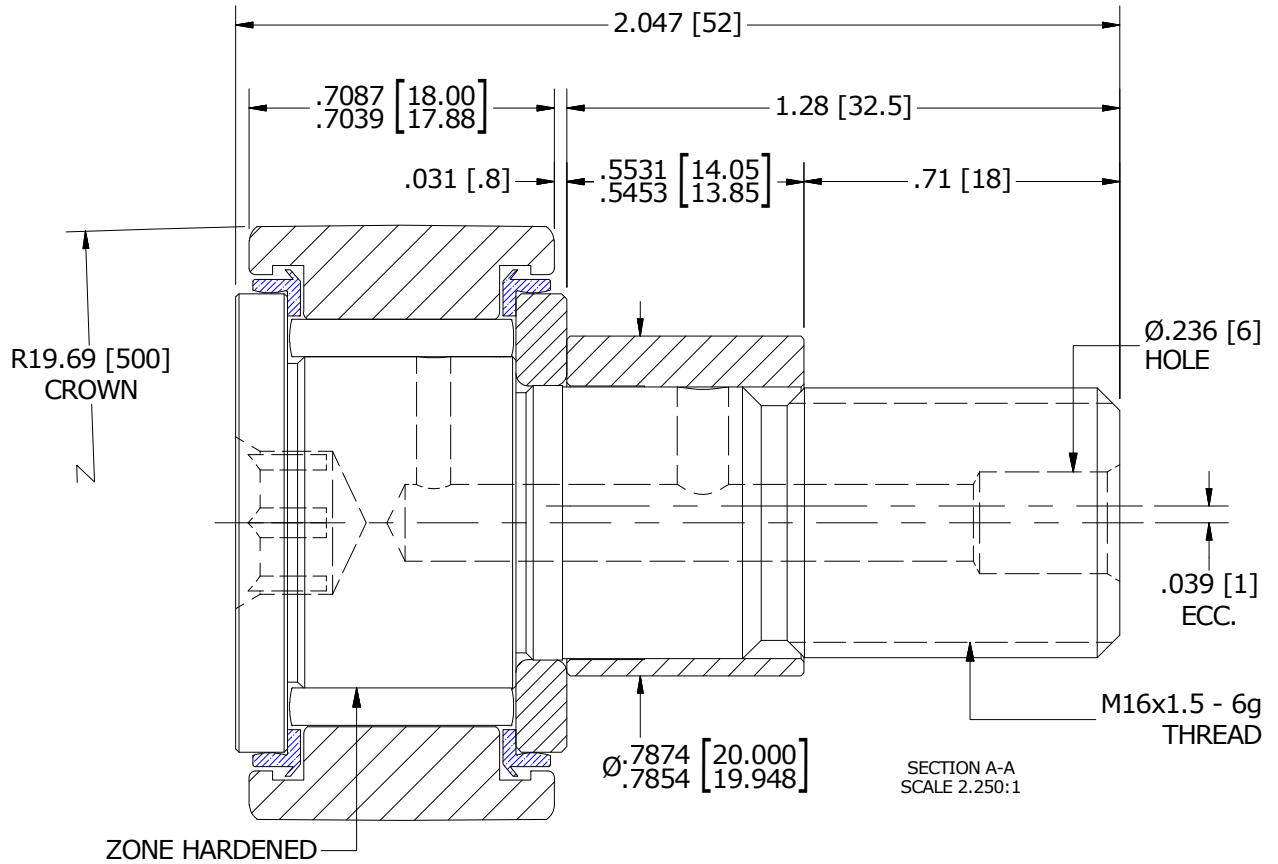
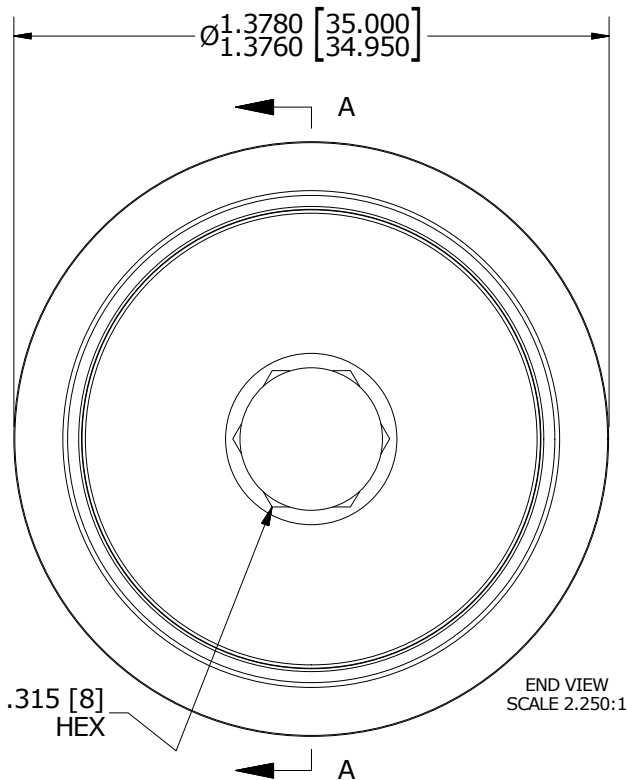
MAXIMUM CLAMPING TORQUE		
Thread Type	Nm	Inch Lbs
DRY	57	504
LUBRICATED	28.5	252

RECOMMENDED MOUNTING HOLE Ø		
Limit	mm	Inch
MIN	20.000	.7874
MAX	20.025	.7884

MS NO. \_\_\_\_\_ NSN NO. \_\_\_\_\_ DRAWING NO. MCNBE-35-SB



- NOTES:  
 1. BEARING IS PACKED WITH NLGI GRADE 2, LITHIUM BASED GREASE (UNLESS OTHERWISE SPECIFIED)  
 2. ALL EXPOSED STEEL SURFACES HAVE BLACK OXIDE  
 3. LIMITING SPEEDS:  
 A. GREASE = 4,200 RPM  
 B. OIL = 5,500 RPM



MATERIAL NOTES:

- OUTER RACE - BEARING STEEL, HEAT TREATED
- STUD - BEARING STEEL, ZONE HARDENED
- NEEDLE ROLLER - BEARING STEEL, HEAT TREATED
- WASHER - COLD ROLLED STEEL, HEAT TREATED
- SEAL - SYNTHETIC
- ECCENTRIC SLEEVE - COLD ROLLED STEEL

CUSTOMER PART#

XX = ± .01  
 XXX = ± .005  
 XXXX = ± .0005  
 ANGLES = ± 1'  
 INCH [METRIC]  
 FRACTION = ± 1/32

CARTER MANUFACTURING IS NOT RESPONSIBLE FOR TYPOGRAPHICAL ERRORS

**CARTER MANUFACTURING CO., INC.**  
 GRAND HAVEN, MICHIGAN 49417

ENGINEERING CHANGE ORDER NOTE

REVISION

PART NAME: ASSEMBLY

**B**

AUTHOR BY  
HG

DRAWN BY  
SGW

CHK'D BY  
MD

SALES  
KR

MATERIAL  
NOTED

REVISION BY  
SGW

DATE  
9/28/2015

DATE  
1/10/2008

DATE  
9/28/2015

DATE  
9/16/2015

SHEET  
1 OF 2