

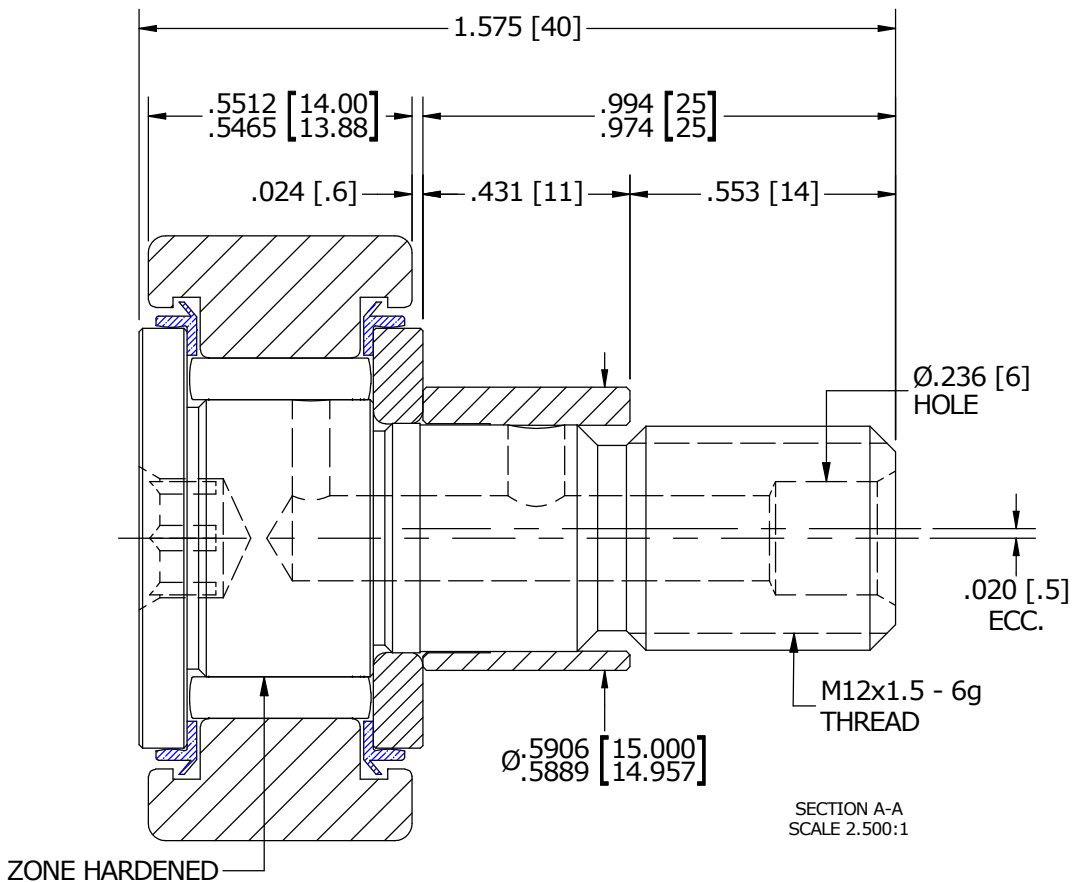
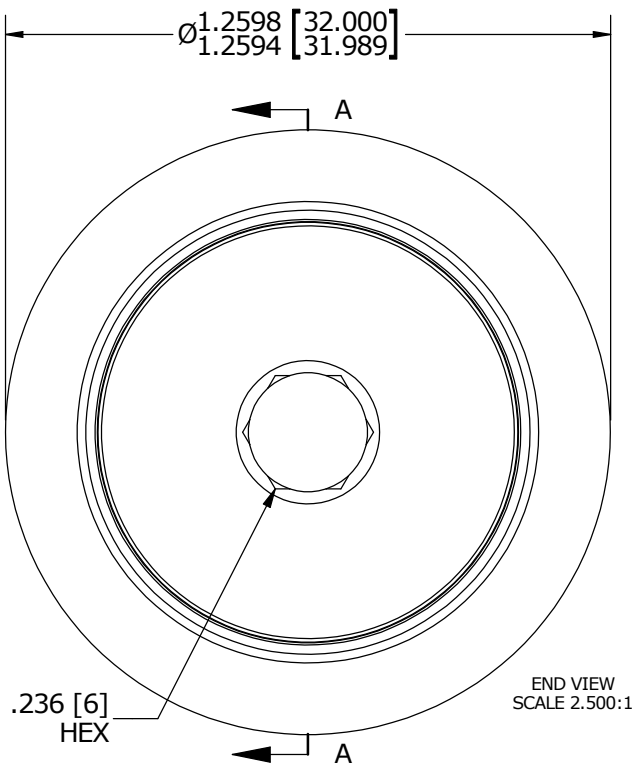
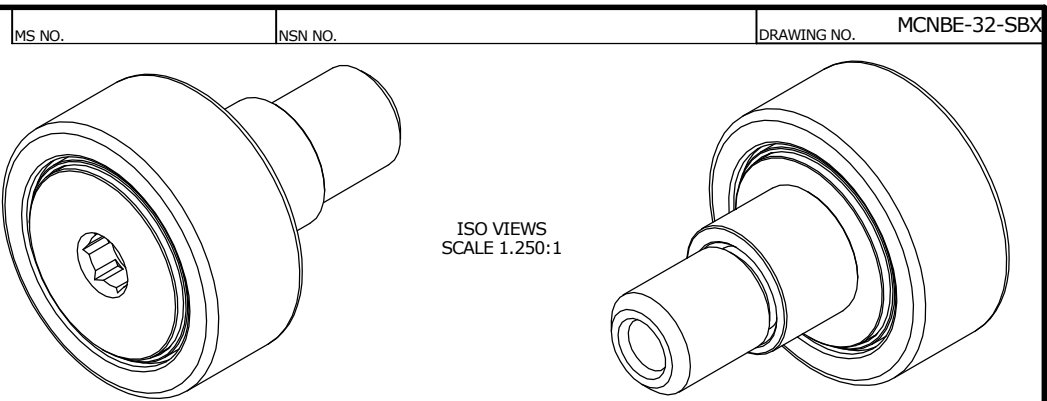
ISO/ABMA BASIC LOAD RATINGS		
Rating	Newtons	Lbs
DYNAMIC	13,240	2,976
STATIC	18,140	4,078

TRACK ROLLER LOAD RATINGS		
RATING	Newtons	Lbs
DYNAMIC	11,080	2,491
STATIC	15,300	3,440

MAXIMUM CLAMPING TORQUE		
Thread Type	Nm	Inch Lbs
DRY	22	195
LUBRICATED	11	97.5

RECOMMENDED MOUNTING HOLE Ø		
Limit	mm	Inch
MIN	15.050	.5925
MAX	15.075	.5935

- NOTES:
- BEARING IS PACKED WITH NLGI GRADE 2, LITHIUM BASED GREASE (UNLESS OTHERWISE SPECIFIED)
  - ALL EXPOSED STEEL SURFACES HAVE BLACK OXIDE
  - LIMITING SPEEDS:
    - GREASE = 6,400 RPM
    - OIL = 8,300 RPM



MATERIAL NOTES:

OUTER RACE - BEARING STEEL, HEAT TREATED  
 STUD - BEARING STEEL, ZONE HARDENED  
 NEEDLE ROLLER - BEARING STEEL, HEAT TREATED  
 WASHER - COLD ROLLED STEEL, HEAT TREATED  
 ECCENTRIC SLEEVE - COLD ROLLED STEEL  
 SEAL - SYNTHETIC

CUSTOMER PART#	XX = ± .01 XXX = ± .005 XXXX = ± .0005 ANGLES = ± 1° INCH [METRIC] FRACTION = ± 1/32
<i>ENGINEERING CHANGE ORDER NOTE</i>	

CARTER MANUFACTURING IS NOT RESPONSIBLE FOR TYPOGRAPHICAL ERRORS		<b>CARTER MANUFACTURING CO., INC.</b> GRAND HAVEN, MICHIGAN 49417			
<i>REVISION</i>		PART NAME: ASSEMBLY			
<b>A</b>	AUTHOR BY HG	DRAWN BY SGW	CHK'D BY MD	SALES KR	MATERIAL NOTED
REVISION BY SGW	DATE 12/12/2015	DATE 11/13/2015	DATE 11/23/2015	DATE 11/13/2015	SHEET 1 OF 2