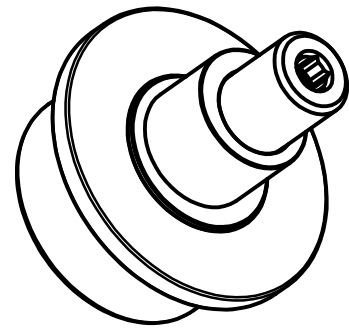
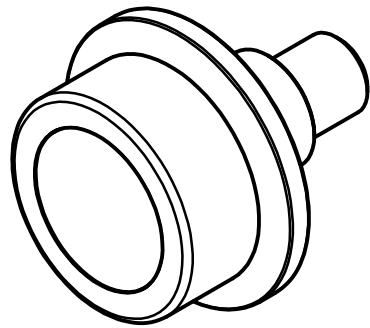
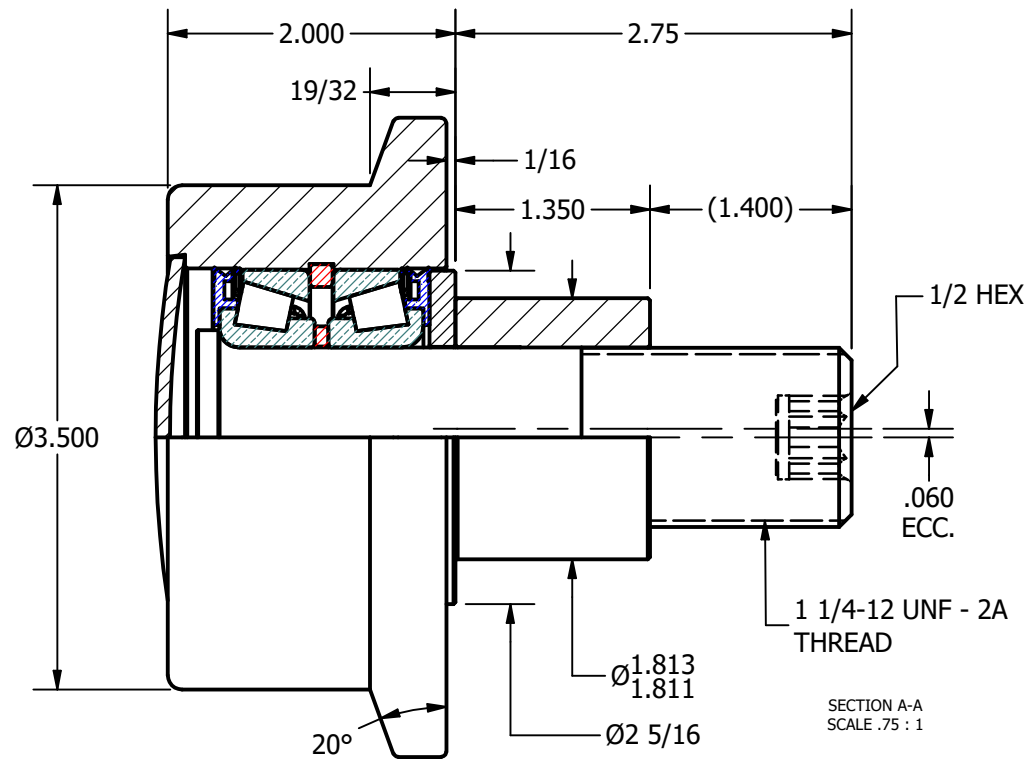
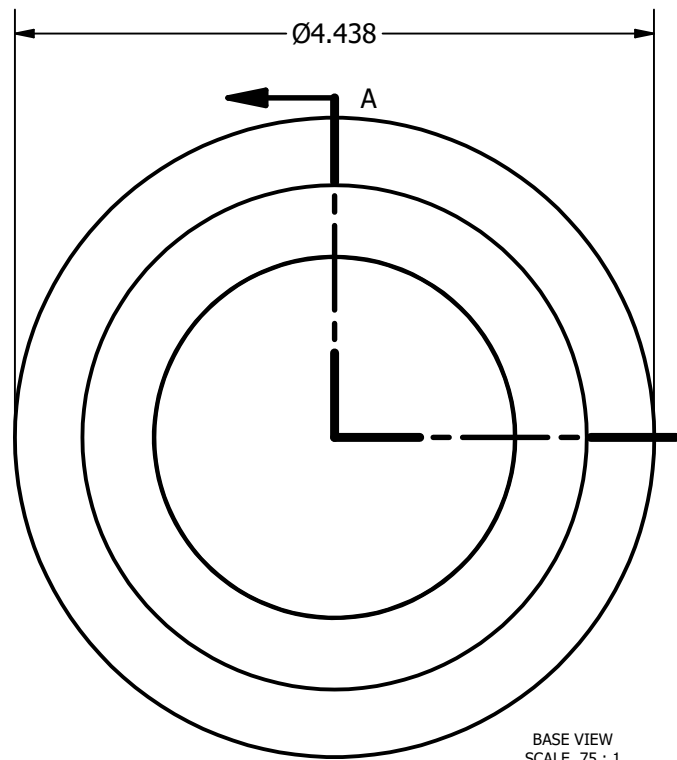


LOAD RATINGS	
RATING	Lbs
RADIAL BASIC DYNAMIC [C]	14,300
DYNAMIC THRUST LOAD	12,000
MAXIMUM STATIC CAPACITY [Co]	20,000

- NOTES:
 1. BEARING COMES PACKED WITH LITHIUM BASED #2 WEIGHT GREASE
 2. STUD & WASHER: ALL EXPOSED SURFACES HAVE BLACK OXIDE



ISO VIEWS
 SCALE .375 : 1



MATERIAL NOTES:
 OUTER ROLLER - BEARING STEEL, HEAT TREATED
 STUD - COLD ROLLED STEEL
 BEARING ASSY - LM67000A
 WASHER - COLD ROLLED STEEL
 END CAP - COLD ROLLED STEEL
 ECCENTRIC SLEEVE - COLD ROLLED STEEL
 SEAL - LM67048

CUSTOMER PART#	.XX = ± .01 .XXX = ± .005 .XXXX = ± .0005 ANGLES = ± 1' INCH [METRIC] FRACTION = ± 1/32
CHANGE NOTE:	

CARTER MANUFACTURING IS NOT RESPONSIBLE FOR TYPOGRAPHICAL ERRORS

REVISION	
A	AUTHOR. BY DB
REV. BY	DATE
SGW	8/31/2011

CARTER MANUFACTURING CO., INC.
 GRAND HAVEN, MICHIGAN 49417

PART NAME: ASSEMBLY		SHEET 1 OF 2			
AUTHOR. BY	DRAWN BY	CHK'D BY	SALES	MATERIAL	
DB	SGW	MD	KR	NOTED	
REV. BY	DATE	DATE	DATE	DATE	DRAWING NO.
SGW	8/31/2011	8/31/2011	8/31/2011	8/31/2011	FHRE-350-A