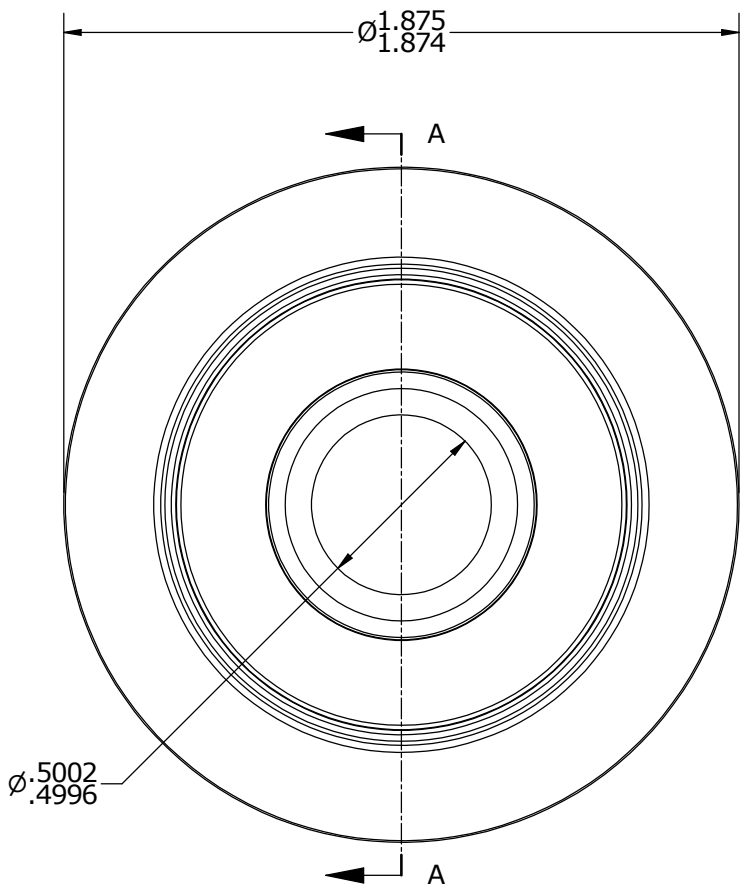


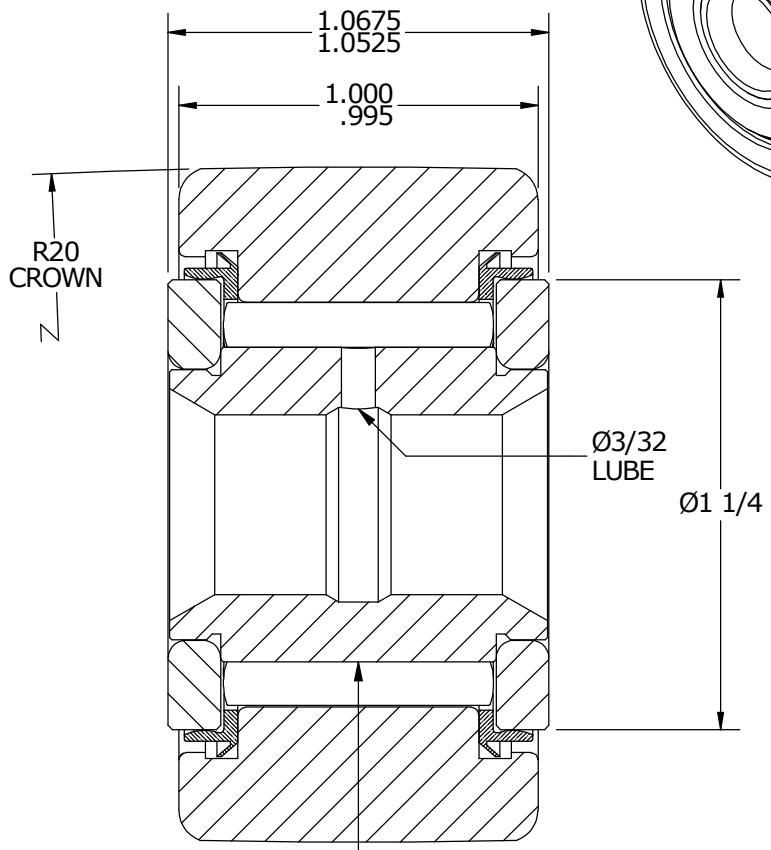
LOAD RATINGS	
RATING	Lbs
RADIAL BASIC DYNAMIC	6,385
MAXIMUM STATIC CAPACITY	15,840

- NOTES:
1. BEARING IS PACKED WITH NLGI GRADE 2, LITHIUM BASED GREASE
 2. ALL EXPOSED SURFACES HAVE BLACK OXIDE

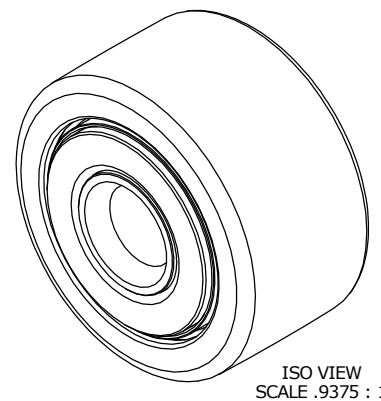
MS NO.	NSN NO.	DRAWING NO.
--------	---------	-------------



END VIEW
SCALE 1.875 : 1



SECTION A-A
SCALE 1.875 : 1



MATERIAL NOTES:

- OUTER RACE - BEARING STEEL, HEAT TREATED
- INNER RACE - BEARING STEEL, ZONE HARDENED
- NEEDLE ROLLERS - BEARING STEEL, HEAT TREATED
- WASHERS - BEARING STEEL, HEAT TREATED
- SEALS - SYNTHETIC

CUSTOMER PART#	XX = ± .01 XXX = ± .005 XXXX = ± .0005 ANGLES = ± 1' INCH [METRIC] FRACTION = ± 1/32
<i>ENGINEERING CHANGE ORDER NOTE</i>	

CARTER MANUFACTURING IS NOT RESPONSIBLE FOR TYPOGRAPHICAL ERRORS

CARTER MANUFACTURING CO., INC.
GRAND HAVEN, MICHIGAN 49417

REVISION		PART NAME: ASSEMBLY					
B	AUTHOR BY	DRAWN BY	CHK'D BY	SALES	MATERIAL		
	HG	JGV	SGW	KPR	NOTED		
REVISION BY	DATE	DATE	DATE	DATE	SHEET		
MD	8/13/2015	8/11/2004	8/12/2015	8/10/2004	1 OF 2		