

**LOAD RATINGS**

RATING	lbf	Newtons
RADIAL BASIC DYNAMIC	6,472	28,789
MAXIMUM STATIC CAPACITY	14,798	65,824

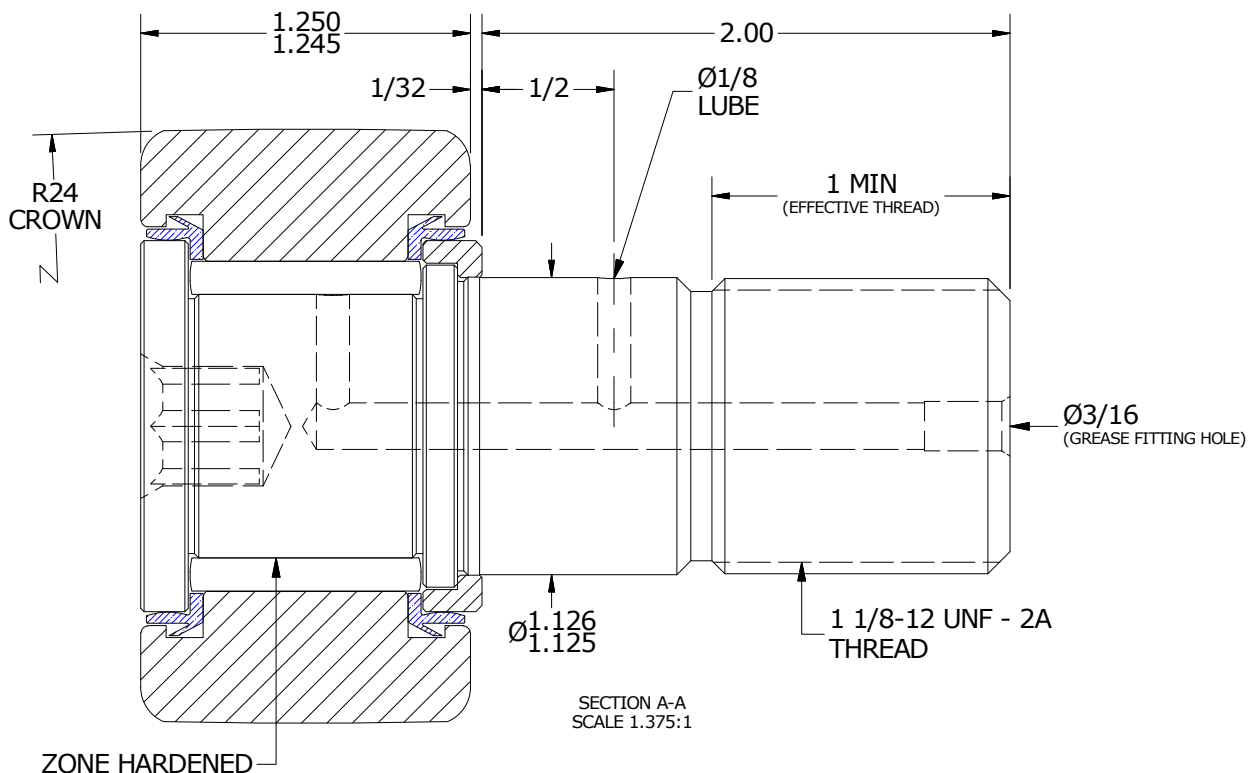
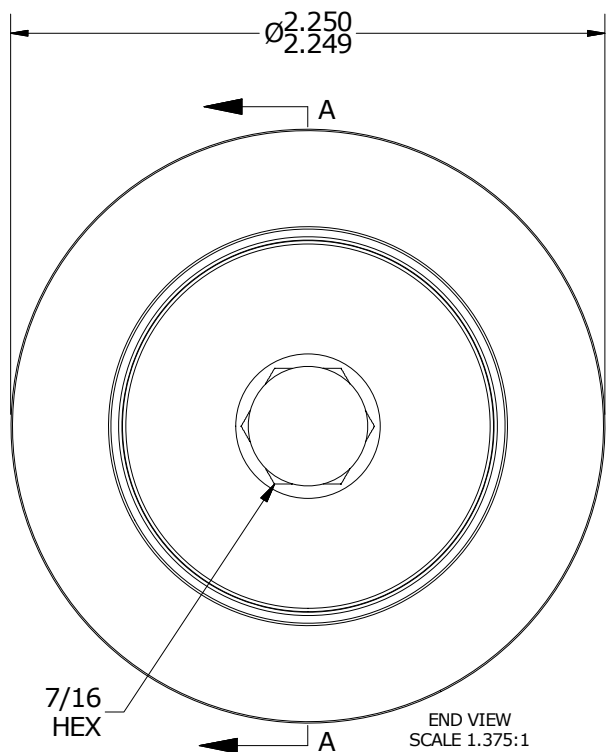
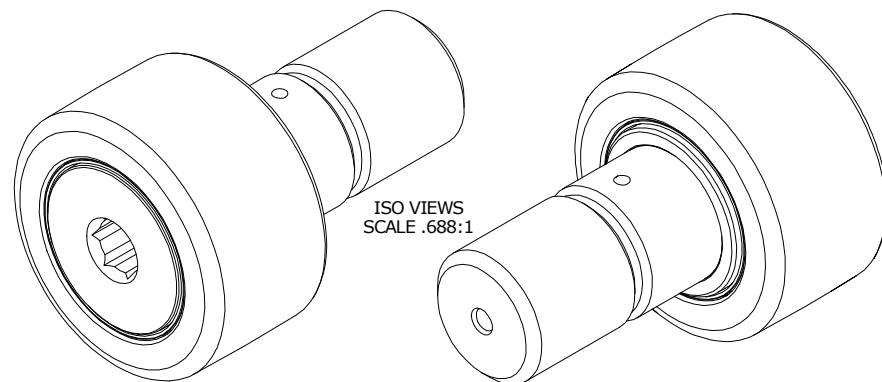
**RECOMMENDED MOUNTING HOLE Ø**

Limit	Inch	mm
MIN	1.1250	28.5750
MAX	1.1255	28.5877

**MAXIMUM CLAMPING TORQUE**

Thread Type	Inch Lbs	Nm
DRY	1,500	169.5
LUBRICATED	750	84.7

**NOTES:**  
 1. BEARING IS PACKED WITH NLGI GRADE 2, FOOD GRADE H1 GREASE (UNLESS OTHERWISE SPECIFIED)  
 2. LIMITING SPEED:  
 A. GREASE = 1,400



**MATERIAL NOTES:**

OUTER - 440C STAINLESS STEEL, HEAT TREATED  
 STUD - 440C STAINLESS STEEL, ZONE HARDENED  
 ROLLER - 440C STAINLESS STEEL, HEAT TREATED  
 WASHER - 440C STAINLESS STEEL, HEAT TREATED  
 SEAL - SYNTHETIC

CUSTOMER PART# \_\_\_\_\_  
 XX = ± .01  
 XXX = ± .005  
 XXXX = ± .0005  
 ANGLES = ± 1'  
 INCH [METRIC]  
 FRACTION = ± 1/32

CARTER MANUFACTURING IS NOT RESPONSIBLE FOR TYPOGRAPHICAL ERRORS

**CARTER MANUFACTURING CO., INC.**

GRAND HAVEN, MICHIGAN 49417

ENGINEERING CHANGE ORDER NOTE

REVISION		PART NAME: Assembly			PRODUCT TYPE: CNB / SC	
<b>B</b>	AUTHOR BY HG	DRAWN BY JAF	CHK'D BY MD	SALES KR	MATERIAL NOTED	
REVISION BY JLB	DATE 8/10/2018	DATE 7/25/2006	DATE 8/10/2018	DATE 8/10/2018	SHEET 1 OF 2	