

LOAD RATINGS

RATING	lbf	Newtons
RADIAL BASIC DYNAMIC	6,472	28,789
MAXIMUM STATIC CAPACITY	8,456	37,614

MS NO.

NSN NO.

DRAWING NO.

CSC-72-SB

RECOMMENDED MOUNTING HOLE Ø

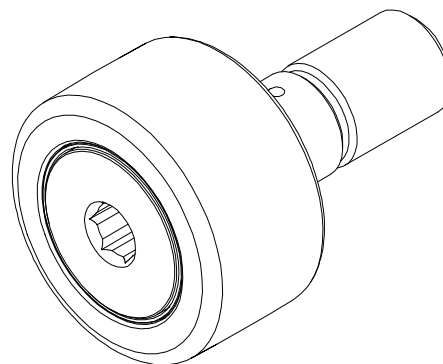
Limit	Inch	mm
MIN	.8750	22.2250
MAX	.8755	22.2377

NOTES:

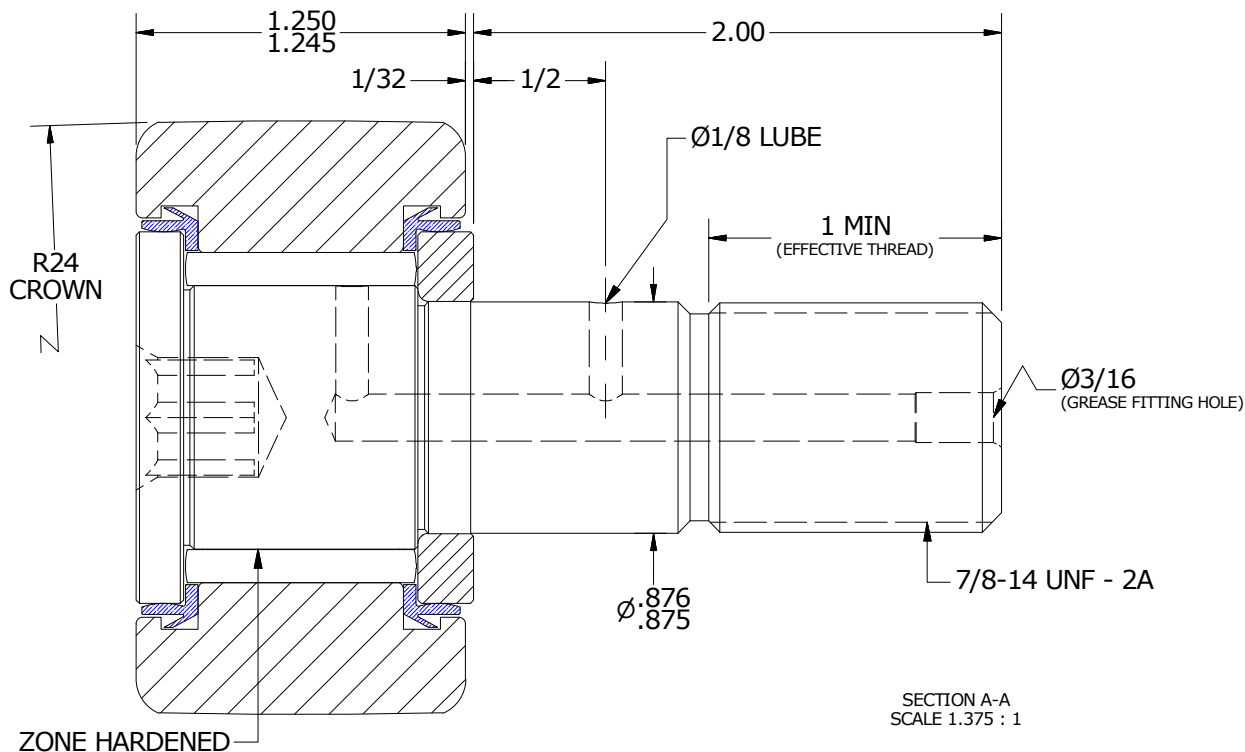
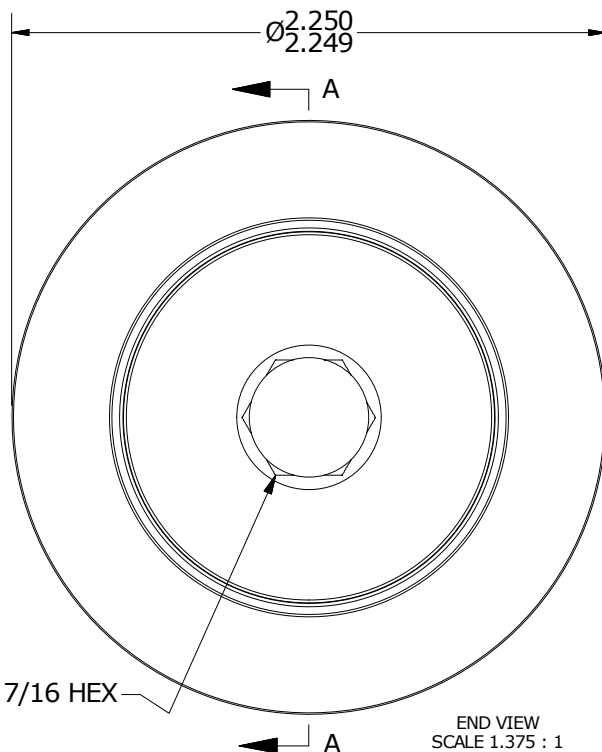
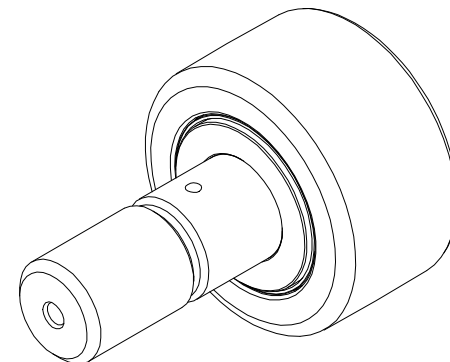
- BEARING IS PACKED WITH NLGI GRADE 2, FOOD GRADE H1 GREASE (UNLESS OTHERWISE SPECIFIED)
- LIMITING SPEED:
A. GREASE = 1,400

MAXIMUM CLAMPING TORQUE

Thread Type	Inch Lbs	Nm
DRY	1,500	169.5
LUBRICATED	750	84.7



ISO VIEWS
SCALE .688 : 1



MATERIAL NOTES:

- OUTER RING - 440C STAINLESS, HEAT TREATED
- STUD - 440C STAINLESS, ZONE HARDENED
- NEEDLE ROLLER(S) - 440C STAINLESS, HEAT TREATED
- WASHER - 440C STAINLESS, HEAT TREATED
- SEAL(S) - SYNTHETIC

CUSTOMER PART#

XX = ± .01
XXX = ± .005
XXXX = ± .0005
ANGLES = ± 1'
INCH [METRIC]
FRACTION = ± 1/32

CARTER MANUFACTURING IS NOT RESPONSIBLE FOR TYPOGRAPHICAL ERRORS

CARTER MANUFACTURING CO., INC.

GRAND HAVEN, MICHIGAN 49417

ENGINEERING CHANGE ORDER NOTE

REVISION

PART NAME: ASSEMBLY

PRODUCT TYPE: CNB / SC

B

AUTHOR BY

DRAWN BY

CHK'D BY

SALES

MATERIAL

HG

GJP

MD

KR

NOTED

REVISION BY

DATE

DATE

DATE

DATE

SHEET

SGW

7/27/2018

11/15/1999

7/27/2018

7/27/2018

1 OF 2