

**LOAD RATINGS**

RATING	lbf	Newtons
RADIAL BASIC DYNAMIC	6,472	28,789
MAXIMUM STATIC CAPACITY	8,456	37,614

MS NO.

NSN NO.

DRAWING NO.

CSC-64-SB

**RECOMMENDED MOUNTING HOLE Ø**

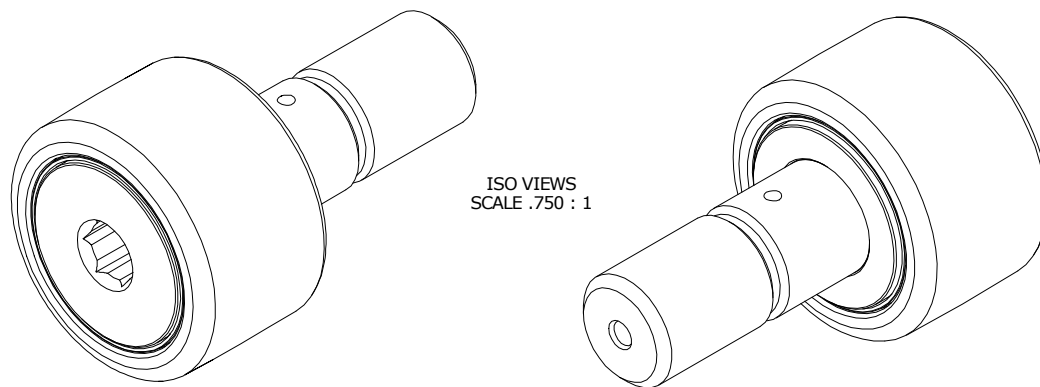
Limit	Inch	mm
MIN	.8750	22.2250
MAX	.8755	22.2377

**NOTES:**

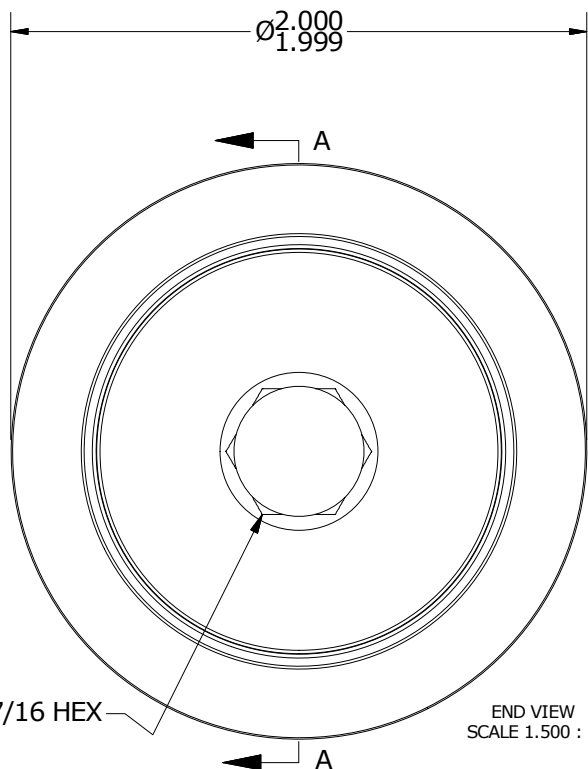
- BEARING IS PACKED WITH NLGI GRADE 2, FOOD GRADE H1 GREASE (UNLESS OTHERWISE SPECIFIED)
- LIMITING SPEED:  
A. GREASE = 1,400

**MAXIMUM CLAMPING TORQUE**

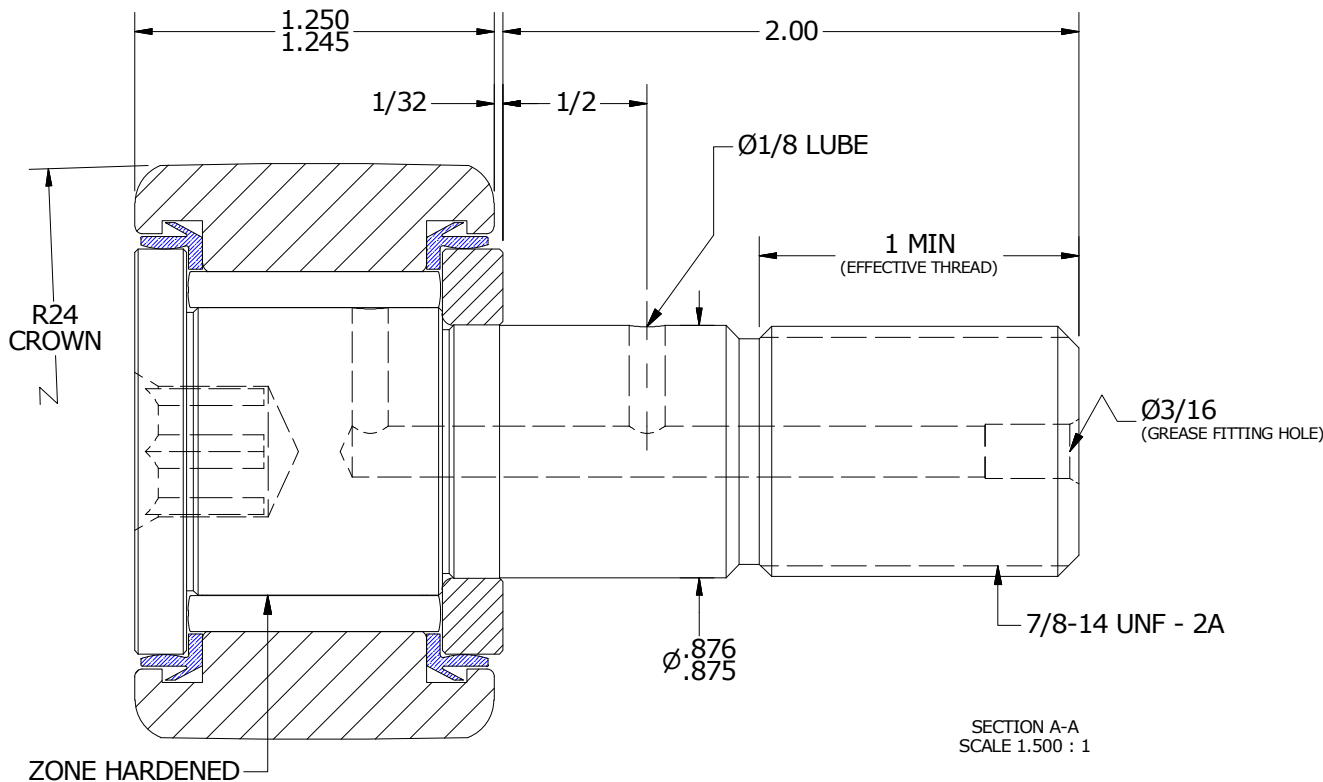
Thread Type	Inch Lbs	Nm
DRY	1,500	169.5
LUBRICATED	750	84.7



ISO VIEWS  
SCALE .750 : 1



END VIEW  
SCALE 1.500 : 1



SECTION A-A  
SCALE 1.500 : 1

**MATERIAL NOTES:**

OUTER RING - 440C STAINLESS, HEAT TREATED  
 STUD - 440C STAINLESS, ZONE HARDENED  
 NEEDLE ROLLER(S) - 440C STAINLESS, HEAT TREATED  
 WASHER - 440C STAINLESS, HEAT TREATED  
 SEAL(S) - SYNTHETIC

CUSTOMER PART#

XX = ± .01  
 XXX = ± .005  
 XXXX = ± .0005  
 ANGLES = ± 1'  
 INCH [METRIC]  
 FRACTION = ± 1/32

CARTER MANUFACTURING IS NOT RESPONSIBLE FOR TYPOGRAPHICAL ERRORS

**CARTER MANUFACTURING CO., INC.**

GRAND HAVEN, MICHIGAN 49417

ENGINEERING CHANGE ORDER NOTE

REVISION

PART NAME: ASSEMBLY

PRODUCT TYPE: CNB / SC

**B**

AUTHOR BY  
HG

DRAWN BY  
JAF

CHK'D BY  
MD

SALES  
KR

MATERIAL  
NOTED

REVISION BY  
SGW

DATE  
7/27/2018

DATE  
7/25/2006

DATE  
7/27/2018

DATE  
7/27/2018

SHEET  
1 OF 2