

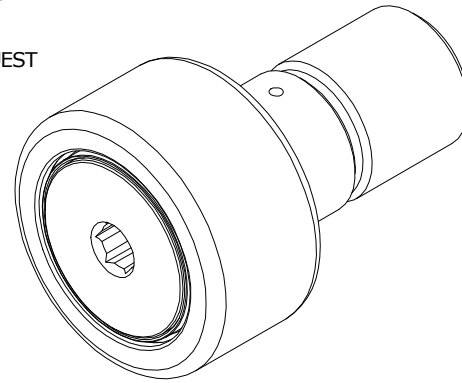
LOAD RATINGS		
RATING	lbf	Newtons
RADIAL BASIC DYNAMIC	6,385	28,402
MAXIMUM STATIC CAPACITY	15,840	70,460

RECOMMENDED MOUNTING HOLE Ø		
Limit	Inch	mm
MIN	1.0000	25.4000
MAX	1.0005	25.4127

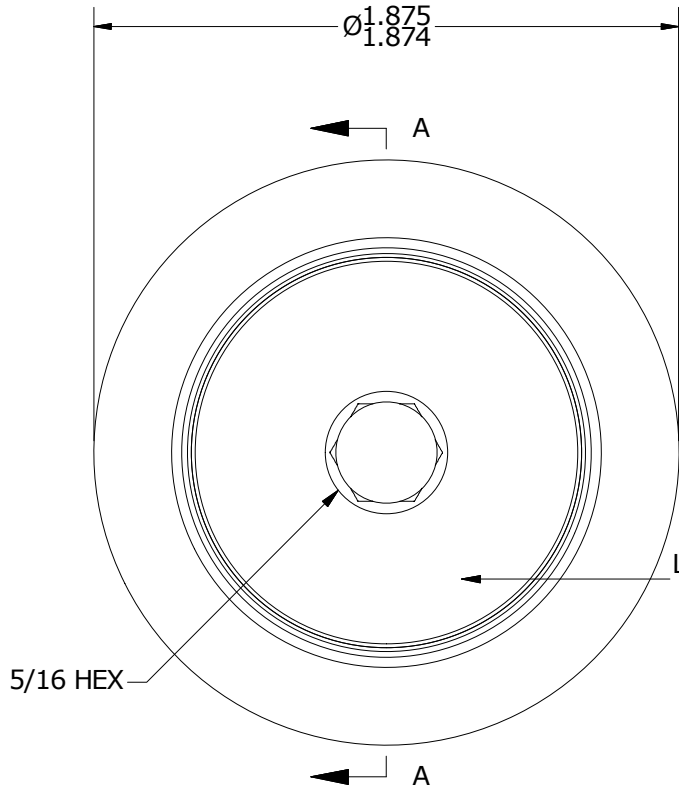
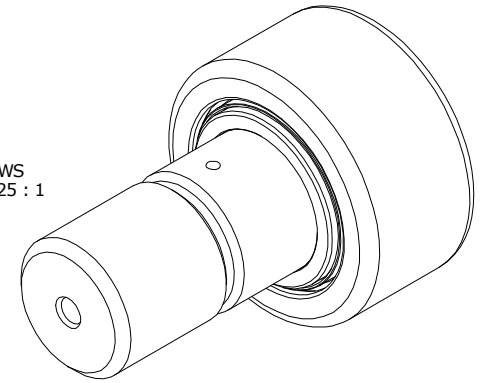
MAXIMUM CLAMPING TORQUE		
Thread Type	Inch lbf	Nm
DRY	2,250	254
LUBRICATED	1,125	127

NOTES:

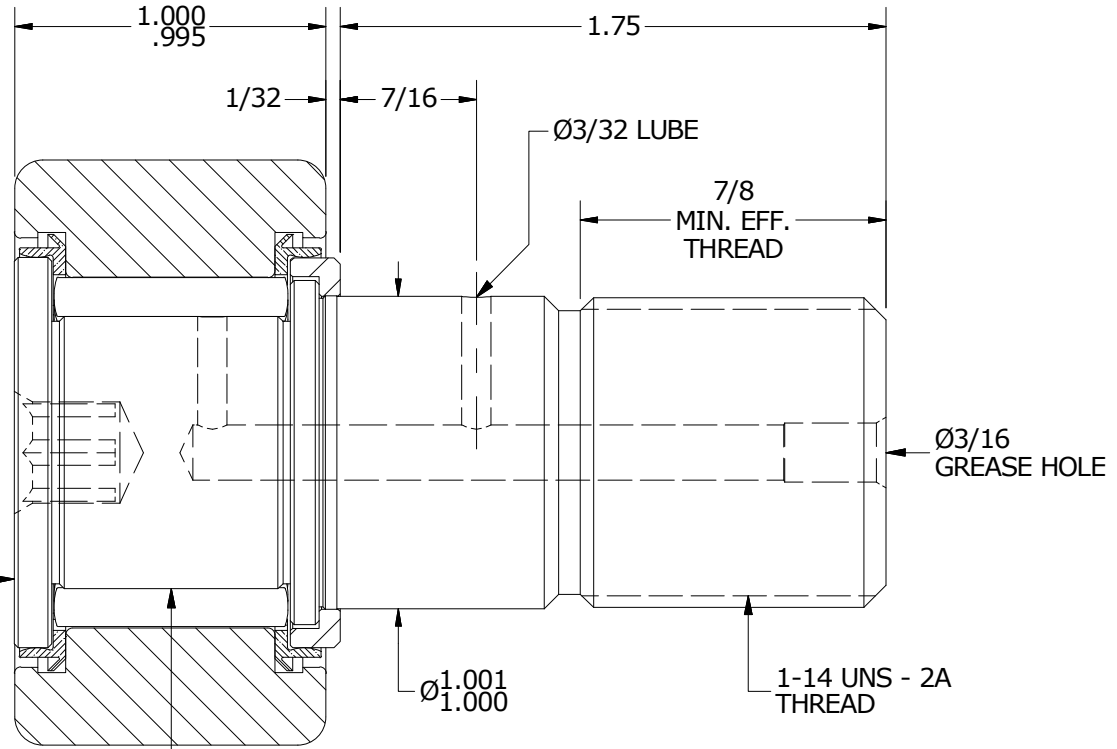
1. BEARING IS PACKED WITH NLGI GRADE 2, LITHIUM BASED GREASE UNLESS OTHERWISE SPECIFIED
2. ALL EXPOSED SURFACES HAVE BLACK OXIDE
3. CUSTOM LASER ETCHING AVAILABLE UPON REQUEST
4. LIMITING SPEED:
  - A. GREASE = 2,000 RPM



ISO VIEWS  
SCALE .8125 : 1



END VIEW  
SCALE 1.625 : 1



SECTION A-A  
SCALE 1.625 : 1

MATERIAL NOTES:

- OUTER RING - BEARING STEEL, HEAT TREATED
- STUD - BEARING STEEL, ZONE HARDENED
- NEEDLE ROLLERS - BEARING STEEL, HEAT TREATED
- WASHER - BEARING STEEL, HEAT TREATED
- SEALS - SYNTHETIC

CUSTOMER PART#

XX = ± .01  
XXX = ± .005  
XXXX = ± .0005  
ANGLES = ± 1'  
INCH [METRIC]  
FRACTION = ± 1/32

CARTER MANUFACTURING IS NOT RESPONSIBLE FOR TYPOGRAPHICAL ERRORS

**CARTER MANUFACTURING CO., INC.**  
GRAND HAVEN, MICHIGAN 49417

ENGINEERING CHANGE ORDER NOTE

REVISION

PART NAME: Assembly

PRODUCT TYPE: CNBH

C

AUTHOR BY  
HG

DRAWN BY  
GJP

CHK'D BY  
SGW

SALES  
KPR

MATERIAL  
NOTED

REVISION BY  
MD

DATE  
8/13/2019

DATE  
8/14/2000

DATE  
8/12/2019

DATE  
8/13/2000

SHEET  
1 OF 2