

LOAD RATINGS		
RATING	lbf	Newtons
RADIAL BASIC DYNAMIC	680	3,025
MAXIMUM STATIC CAPACITY	1,580	7,028

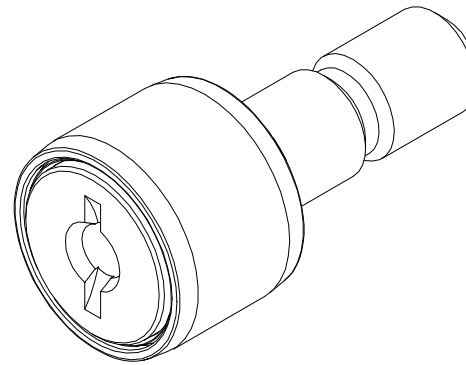
RECOMMENDED MOUNTING HOLE Ø		
Limit	Inch	mm
MIN	.2500	6.3500
MAX	.2505	6.3627

MAXIMUM CLAMPING TORQUE		
Thread Type	Inch Lbs	Nm
DRY	35	3.95
LUBRICATED	17.5	1.98

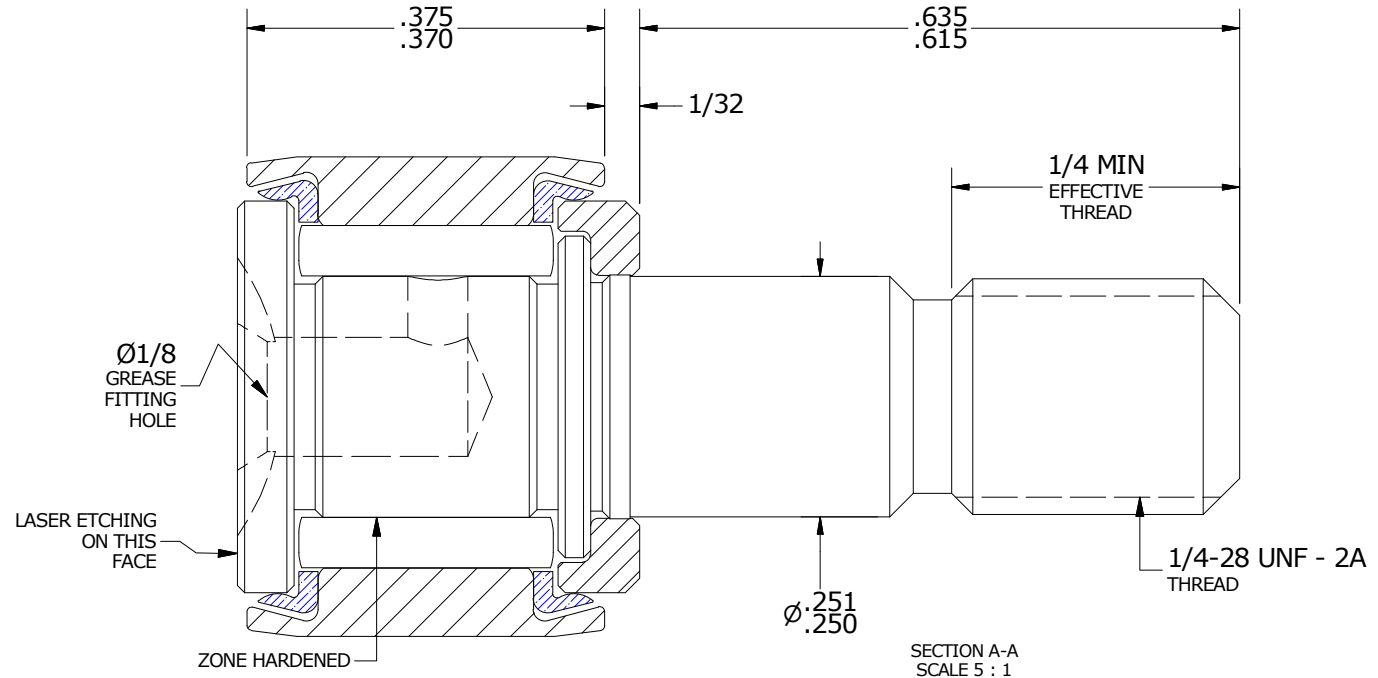
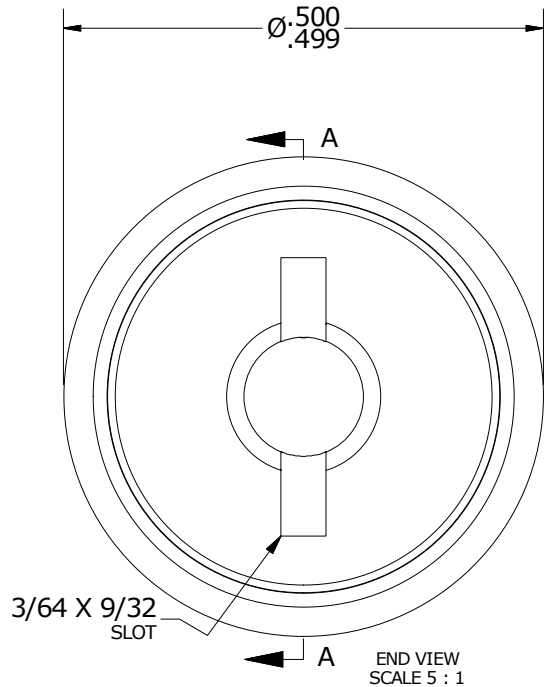
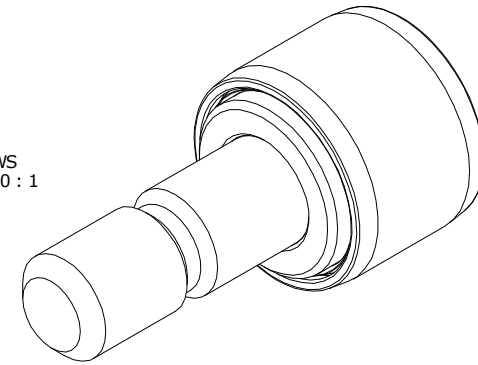
NOTES:

1. BEARING IS PACKED WITH NLGI GRADE 2, LITHIUM BASED GREASE (UNLESS OTHERWISE SPECIFIED)
2. ALL EXPOSED STEEL SURFACES HAVE BLACK OXIDE
3. CUSTOM LASER ETCHING UPON REQUEST
4. LIMITING SPEED:
 - A. GREASE = 11,500 RPM

MS NO. _____ NSN NO. _____ DRAWING NO. CNBH-16-S



ISO VIEWS
SCALE 2.500 : 1



MATERIAL NOTES:

- OUTER RING - BEARING STEEL, HEAT TREATED
- STUD - BEARING STEEL, ZONE HARDENED
- NEEDLE ROLLER(S) - BEARING STEEL, HEAT TREATED
- WASHER - BEARING STEEL, HEAT TREATED
- SEAL(S) - SYNTHETIC

CUSTOMER PART#

XX = ± .01
XXX = ± .005
XXXX = ± .0005
ANGLES = ± 1'
INCH [METRIC]
FRACTION = ± 1/32

CARTER MANUFACTURING IS NOT RESPONSIBLE FOR TYPOGRAPHICAL ERRORS

CARTER MANUFACTURING CO., INC.

GRAND HAVEN, MICHIGAN 49417

ENGINEERING CHANGE ORDER NOTE

REVISION

PART NAME: ASSEMBLY

PRODUCT TYPE: CNB

B

AUTHOR BY
DB

DRAWN BY
JGV

CHK'D BY
MD

SALES
KR

MATERIAL
NOTED

REVISION BY
SGW

DATE
1/28/2011

DATE
1/23/2006

DATE
1/28/2011

DATE
1/28/2011

SHEET
1 OF 2