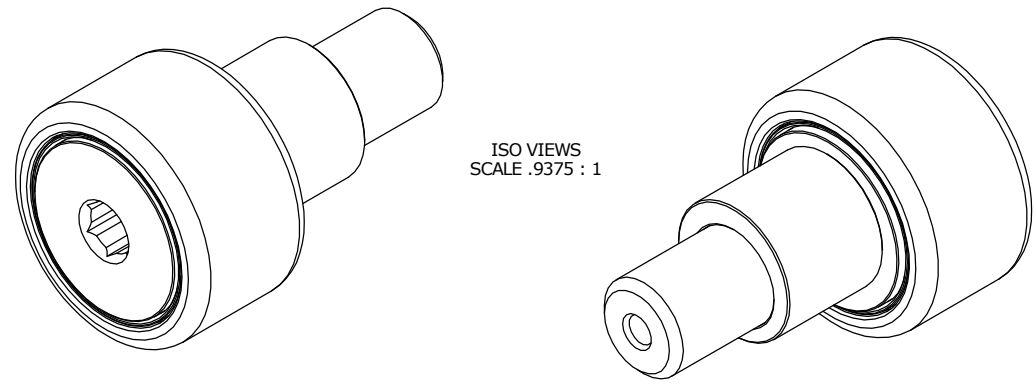


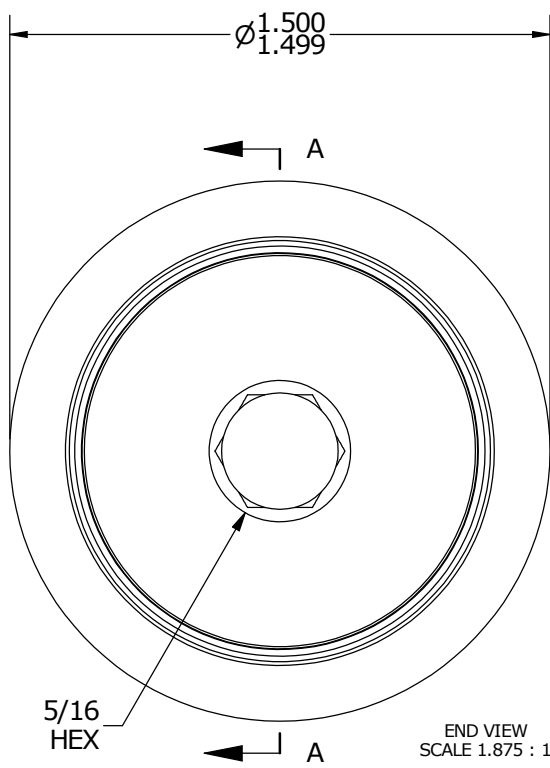
LOAD RATINGS	
RATING	Lbs
RADIAL BASIC DYNAMIC	4,840
MAXIMUM STATIC CAPACITY	5,640

NOTES:  
 1. BEARING IS PACKED WITH NLGI GRADE 2, LITHIUM BASED GREASE  
 2. ALL EXPOSED SURFACES HAVE BLACK OXIDE

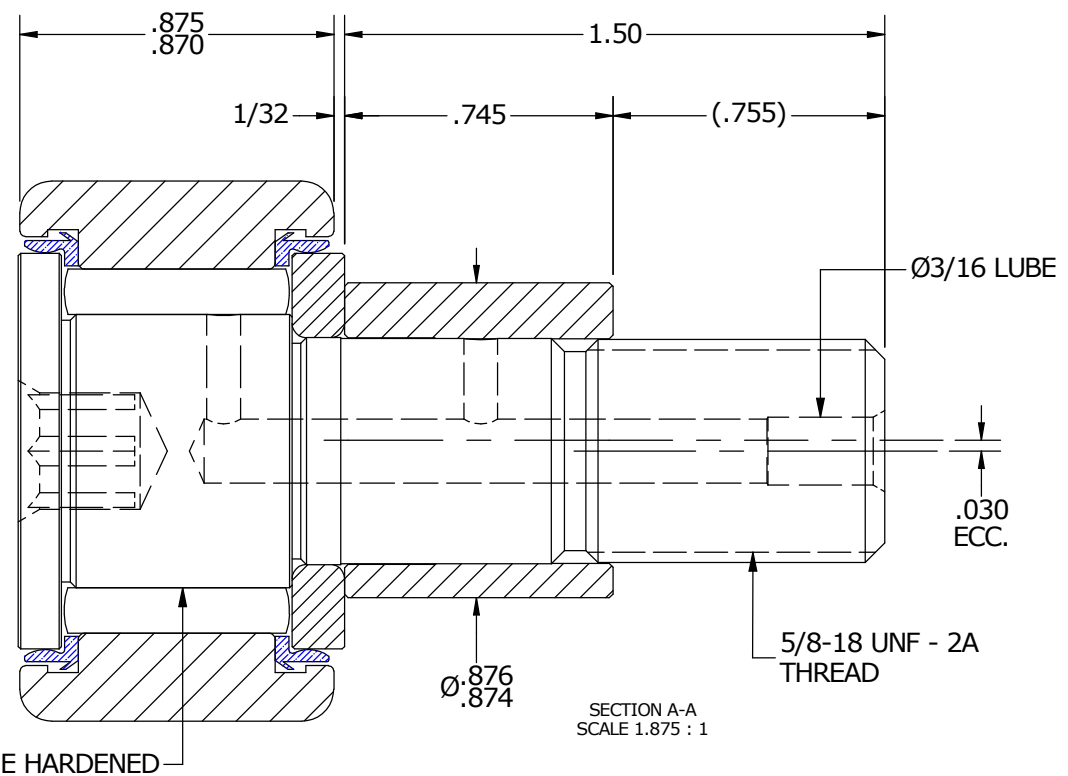
MS NO. \_\_\_\_\_ NSN NO. \_\_\_\_\_ DRAWING NO. \_\_\_\_\_



ISO VIEWS  
SCALE .9375 : 1



END VIEW  
SCALE 1.875 : 1



SECTION A-A  
SCALE 1.875 : 1

MATERIAL NOTES:  
 OUTER RACE - BEARING STEEL, HEAT TREATED  
 STUD - BEARING STEEL, ZONE HARDENED  
 NEEDLE ROLLER - BEARING STEEL, HEAT TREATED  
 WASHER - COLD ROLLED STEEL, HEAT TREATED  
 SEAL - SYNTHETIC  
 ECCENTRIC SLEEVE - COLD ROLLED STEEL

CUSTOMER PART# \_\_\_\_\_  
 XX = ± .01  
 XXX = ± .005  
 XXXX = ± .0005  
 ANGLES = ± 1'  
 INCH [METRIC]  
 FRACTION = ± 1/32

CARTER MANUFACTURING IS NOT RESPONSIBLE FOR TYPOGRAPHICAL ERRORS

**CARTER MANUFACTURING CO., INC.**  
 GRAND HAVEN, MICHIGAN 49417

<i>ENGINEERING CHANGE ORDER NOTE</i>	
REVISION BY	DATE
MD	3/6/2013

REVISION		PART NAME: Assembly			
B	AUTHOR BY	DRAWN BY	CHK'D BY	SALES	MATERIAL
	DB	GJP	SGW	KPR	NOTED
REVISION BY	DATE	DATE	DATE	DATE	SHEET
MD	3/6/2013	12/8/2000	3/6/2013	12/7/2000	1 OF 2