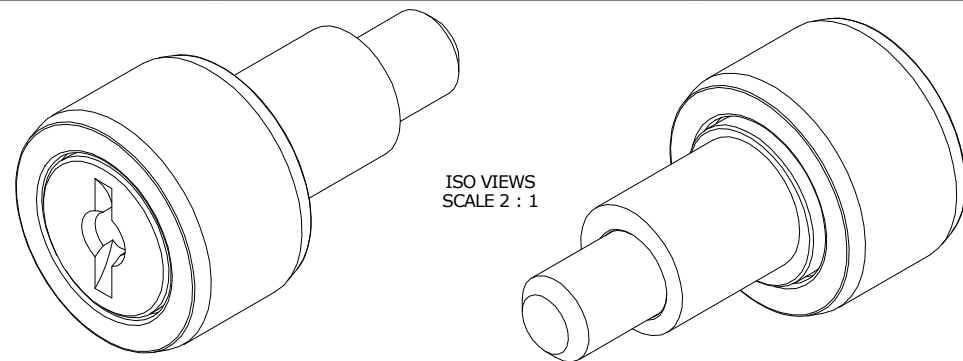


LOAD RATINGS		
RATING	Lbs	Newtons
RADIAL BASIC DYNAMIC	955	4,248
MAXIMUM STATIC CAPACITY	1,215	5,405

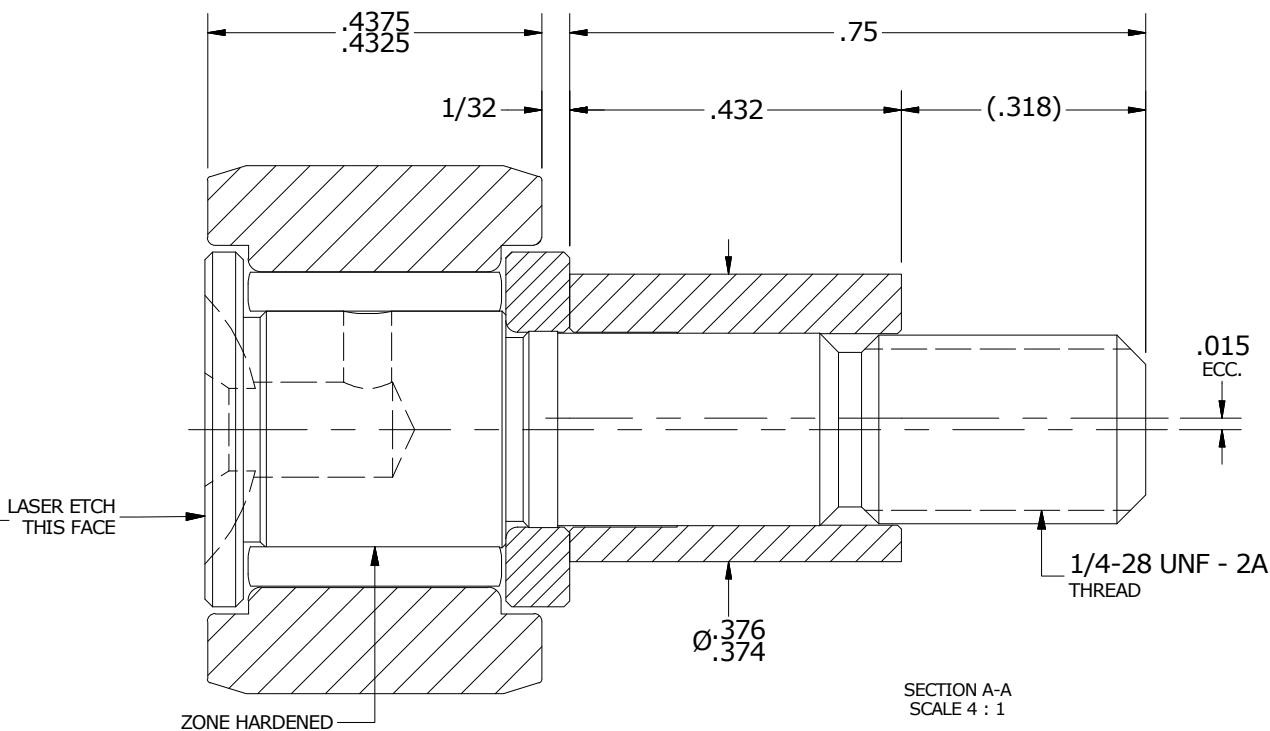
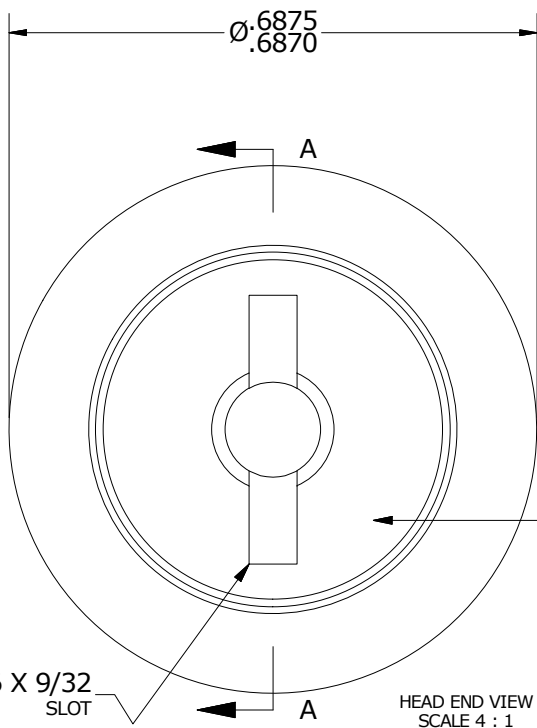
MS NO. _____ NSN NO. _____ DRAWING NO. CNBE-22

RECOMMENDED MOUNTING HOLE Ø		
Limit	Inch	mm
MIN	.377	9.5758
MAX	.379	9.6266

- NOTES:
- BEARING IS PACKED WITH NLGI GRADE 2, LITHIUM BASED GREASE (UNLESS OTHERWISE SPECIFIED)
 - ALL EXPOSED STEEL SURFACES HAVE BLACK OXIDE
 - LIMITING SPEED:
 - A. GREASE = 8,300 RPM
 - CUSTOM LASER ETCHING IS AVAILABLE UPON REQUEST



MAXIMUM CLAMPING TORQUE		
Thread Type	Inch Lbs	Nm
DRY	35	3.95
LUBRICATED	70	7.91



MATERIAL NOTES:

OUTER RING - BEARING STEEL, HEAT TREATED
 STUD - BEARING STEEL, ZONE HARDENED
 NEEDLE ROLLER(S) - BEARING STEEL, HEAT TREATED
 WASHER - BEARING STEEL, HEAT TREATED
 ECCENTRIC SLEEVE - COLD ROLLED STEEL

CUSTOMER PART# _____
 XX = ± .01
 XXX = ± .005
 XXXX = ± .0005
 ANGLES = ± 1'
 INCH [METRIC]
 FRACTION = ± 1/32

CARTER MANUFACTURING IS NOT RESPONSIBLE FOR TYPOGRAPHICAL ERRORS

CARTER MANUFACTURING CO., INC.
 GRAND HAVEN, MICHIGAN 49417

ENGINEERING CHANGE ORDER NOTE

REVISION		PART NAME: ASSEMBLY			PRODUCT TYPE: CNBE	
A	AUTHOR BY JGV	DRAWN BY JAF	CHK'D BY JGV	SALES KPR	MATERIAL NOTED	
REVISION BY JAF	DATE 6/21/2006	DATE 6/21/2006	DATE 6/21/2006	DATE 6/21/2006	SHEET 1 OF 2	