

LOAD RATINGS		
RATING	lbf	Newtons
RADIAL BASIC DYNAMIC	7,270	32,339
MAXIMUM STATIC CAPACITY	8,200	35,586

RECOMMENDED MOUNTING HOLE Ø

Limit	Inch	mm
MIN	.8750	22.2250
MAX	.8755	22.2377

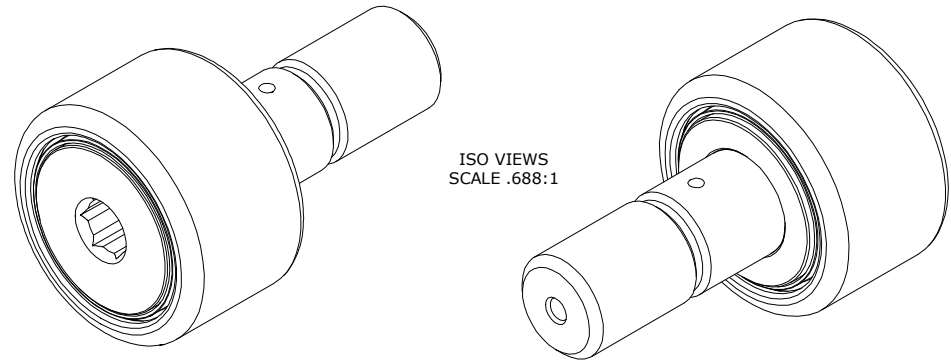
MAXIMUM CLAMPING TORQUE**

Thread Type	Inch Lbs	Nm
LUBRICATED	750	84.7

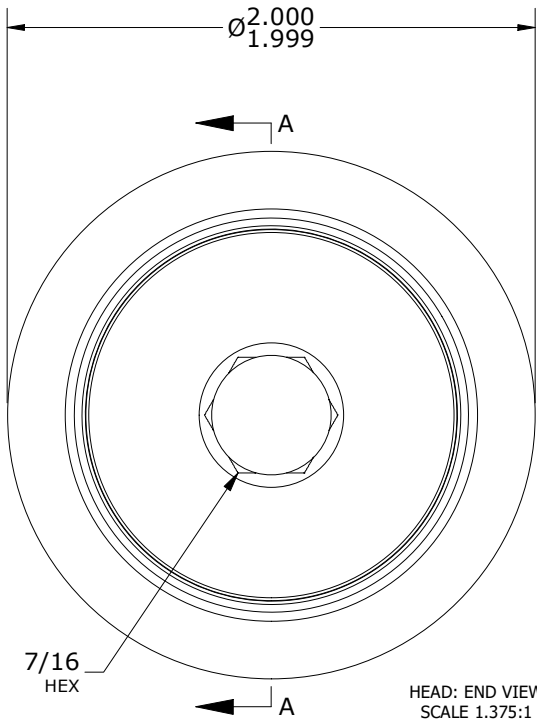
NOTES:

1. BEARING IS PACKED WITH NLGI 2, FOOD GRADE, H1 GREASE (UNLESS OTHERWISE SPECIFIED).
2. ALL EXPOSED SURFACES, AS MOUNTED, HAVE CHROME PLATE.
3. CUSTOM LASER ETCHING IS AVAILABLE UPON REQUEST
4. LIMITING SPEED:
 - A. GREASE = 1,400 RPM.

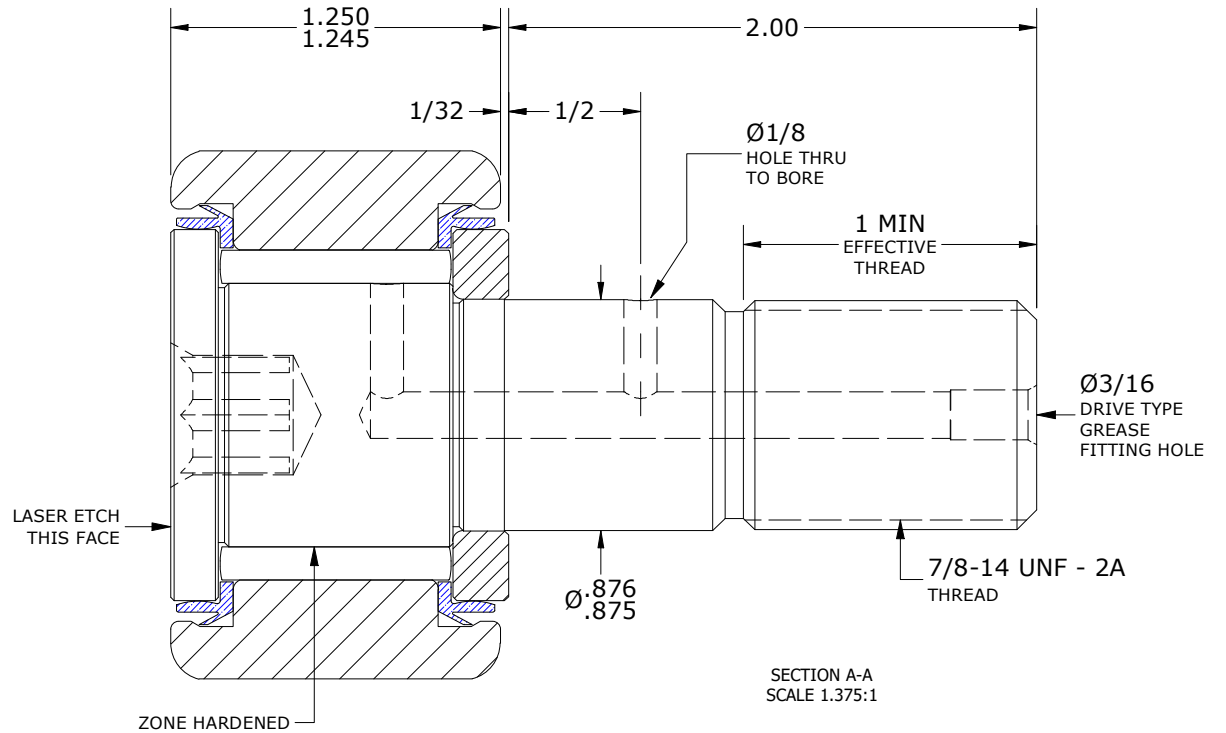
MS NO.	NSN NO.	DRAWING NO.	CNB-64-SBC
--------	---------	-------------	------------



ISO VIEWS
SCALE .688:1



HEAD: END VIEW
SCALE 1.375:1



SECTION A-A
SCALE 1.375:1

**TORQUE SPECIFICATION IS BASED ON LUBRICATED THREADS, IF USING DRY THREADS DOUBLE TORQUE VALUE

MATERIAL NOTES:

- OUTER RING - BEARING STEEL, HEAT TREATED
- STUD - BEARING STEEL, ZONE HARDENED
- NEEDLE ROLLER(S) - 440C STAINLESS STEEL, HEAT TREATED
- WASHER - BEARING STEEL, HEAT TREATED
- SEAL(S) - SYNTHETIC

CUSTOMER PART#

XX = ± .01
XXX = ± .005
XXXX = ± .0005
ANGLES = ± 1'
INCH [METRIC]
FRACTION = ± 1/32

CARTER MANUFACTURING IS NOT RESPONSIBLE FOR TYPOGRAPHICAL ERRORS

CARTER MANUFACTURING CO., INC.

GRAND HAVEN, MICHIGAN 49417

ENGINEERING CHANGE ORDER NOTE

REVISION

PART NAME: ASSEMBLY

PRODUCT TYPE: CNB, CHROME PLATED

B

AUTHOR BY

DRAWN BY

CHK'D BY

SALES

MATERIAL

HG

SGW

MD

KR

NOTED

REVISION BY

DATE

DATE

DATE

DATE

SHEET

JLB

8/9/2018

12/4/2008

8/9/2018

8/10/2018

1 OF 2