

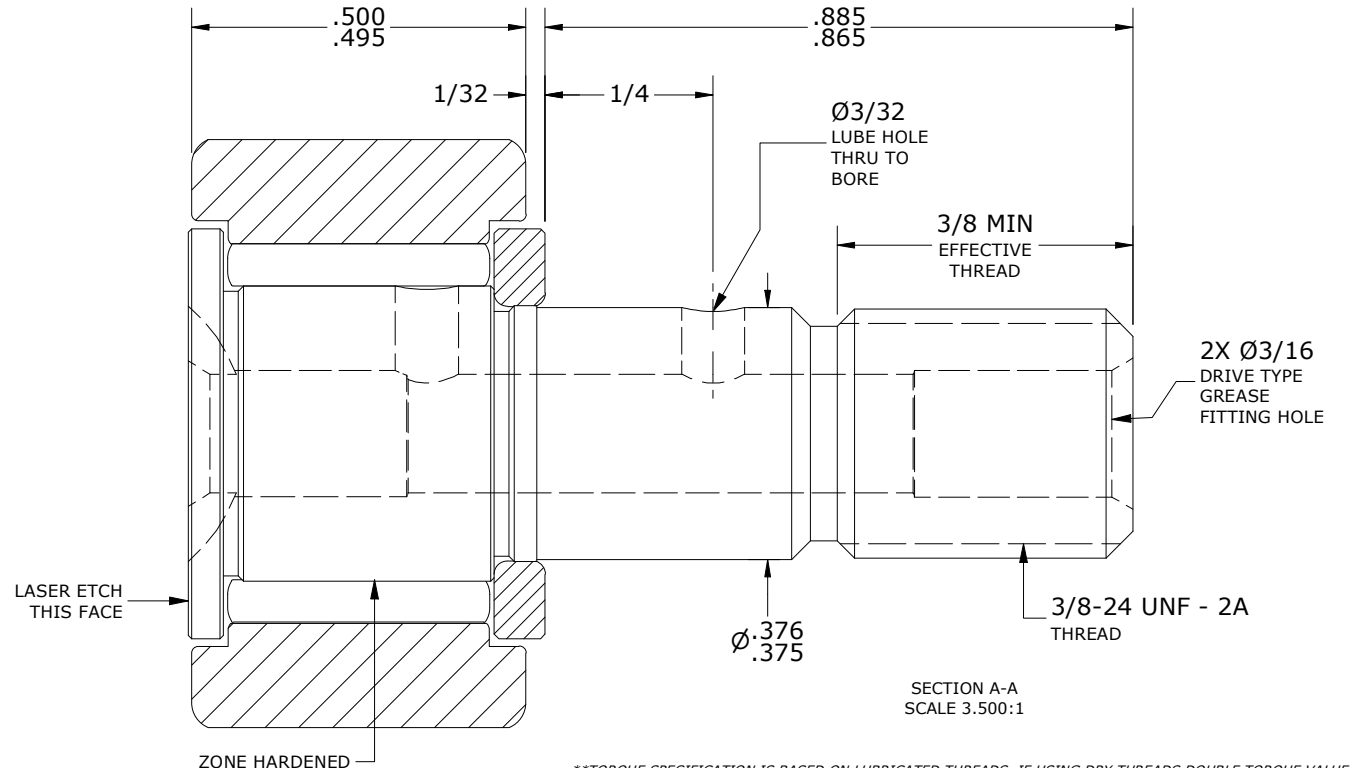
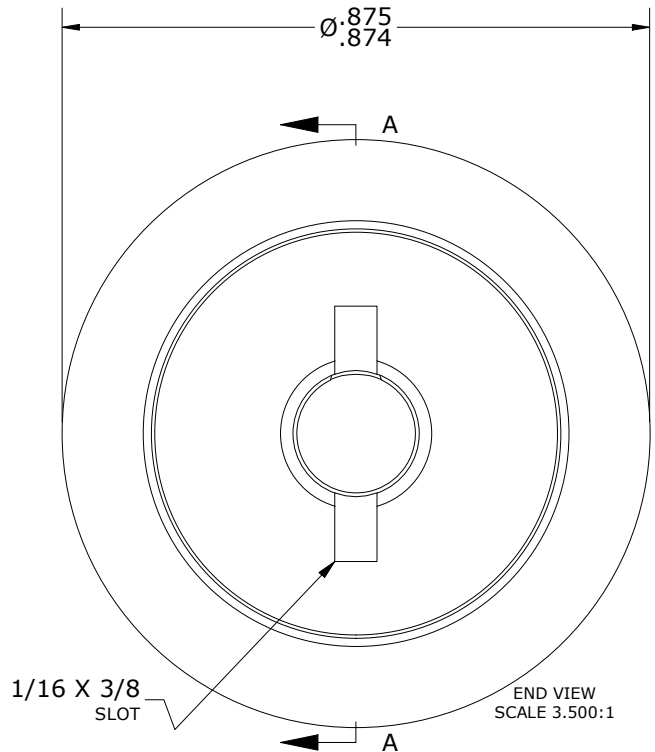
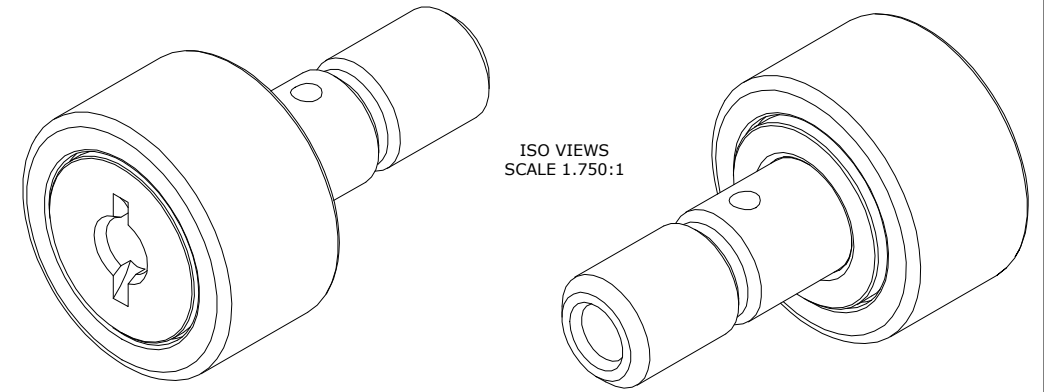
| LOAD RATINGS | | |
|-------------------------|-------|---------|
| RATING | lbf | Newtons |
| RADIAL BASIC DYNAMIC | 1,660 | 7,384 |
| MAXIMUM STATIC CAPACITY | 2,065 | 9,185 |

| RECOMMENDED MOUNTING HOLE Ø | | |
|-----------------------------|-------|--------|
| Limit | Inch | mm |
| MIN | .3750 | 9.5250 |
| MAX | .3755 | 9.5377 |

| MAXIMUM CLAMPING TORQUE** | | |
|---------------------------|----------|-----|
| Thread Type | Inch Lbs | Nm |
| LUBRICATED | 47.5 | 5.5 |

- NOTES:
1. BEARING IS PACKED WITH NLGI GRADE 2, LITHIUM BASED GREASE (UNLESS OTHERWISE SPECIFIED)
 2. ALL EXPOSED STEEL SURFACES HAVE BLACK OXIDE
 3. CUSTOM LASER ETCHING UPON REQUEST
 4. LIMITING SPEED:
 - A. GREASE = 5,400 RPM

MS NO. _____ NSN NO. _____ DRAWING NO. CNB-28



**TORQUE SPECIFICATION IS BASED ON LUBRICATED THREADS, IF USING DRY THREADS DOUBLE TORQUE VALUE

MATERIAL NOTES:

OUTER RING - BEARING STEEL, HEAT TREATED
 STUD - BEARING STEEL, ZONE HARDENED
 NEEDLE ROLLER(S) - BEARING STEEL, HEAT TREATED
 WASHER - BEARING STEEL, HEAT TREATED

| | |
|--------------------------------------|---|
| CUSTOMER PART# | XX = ± .01 XXX = ± .005 XXXX = ± .0005 ANGLES = ± 1' INCH [METRIC] FRACTION = ± 1/32 |
| ENGINEERING CHANGE ORDER NOTE | |

| | |
|--|------------------|
| CARTER MANUFACTURING IS NOT RESPONSIBLE FOR TYPOGRAPHICAL ERRORS | |
| REVISION | |
| C | AUTHOR BY HG |
| REVISION BY SGW | DATE 6/4/2020 |

| | | | | | | | |
|--|----------------|-------------|-------------------|---------------------|-------------------|-------------------|-----------------|
| CARTER MANUFACTURING CO., INC. GRAND HAVEN, MICHIGAN 49417 | | | | PART NAME: ASSEMBLY | | PRODUCT TYPE: CNB | |
| DRAWN BY GJP | CHK'D BY MD | SALES KR | MATERIAL NOTED | DATE 6/6/2000 | DATE 5/29/2020 | DATE 5/5/2018 | SHEET 1 OF 2 |