

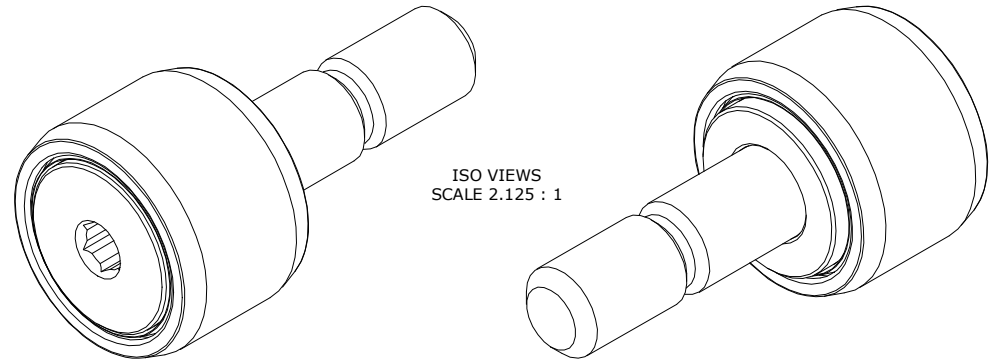
LOAD RATINGS		
RATING	lbf	Newtons
RADIAL BASIC DYNAMIC	860	3,825
MAXIMUM STATIC CAPACITY	600	2,669

NOTES:

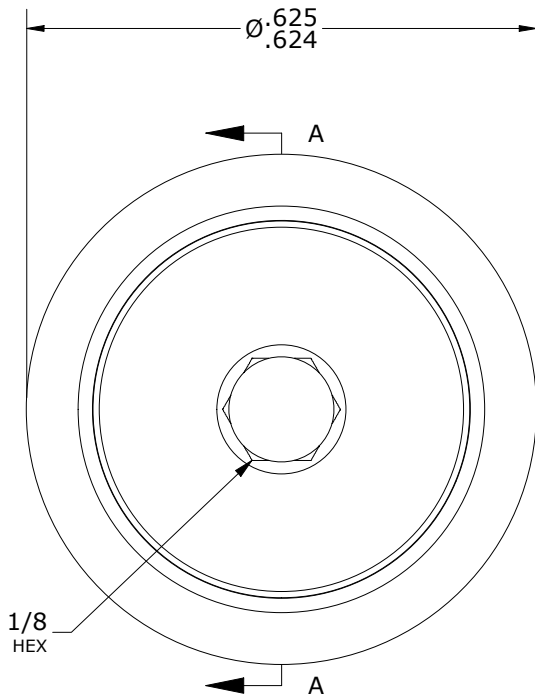
1. BEARING IS PACKED WITH NLGI 2, FOOD GRADE, H1 GREASE (UNLESS OTHERWISE SPECIFIED).
2. ALL EXPOSED SURFACES, AS MOUNTED, HAVE CHROME PLATE.
3. CUSTOM LASER ETCHING IS AVAILABLE UPON REQUEST
4. LIMITING SPEED:
 - A. GREASE = 9,200 RPM.

RECOMMENDED MOUNTING HOLE Ø		
Limit	Inch	mm
MIN	.2500	6.3500
MAX	.2505	6.3627

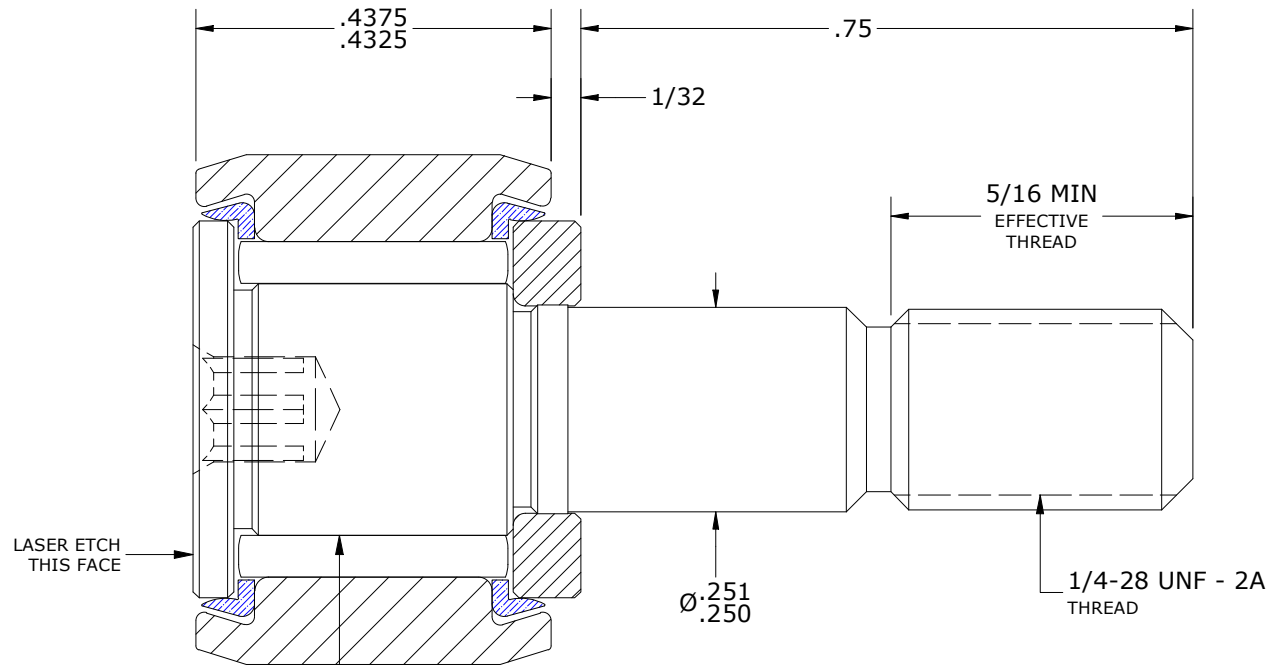
MAXIMUM CLAMPING TORQUE**		
Thread Type	Inch Lbs	Nm
LUBRICATED	17.5	1.98



ISO VIEWS
SCALE 2.125 : 1



HEAD: END VIEW
SCALE 4.250



SECTION A-A
SCALE 4.25 : 1

**TORQUE SPECIFICATION IS BASED ON LUBRICATED THREADS, IF USING DRY THREADS DOUBLE TORQUE VALUE

MATERIAL NOTES:

- OUTER RING - BEARING STEEL, HEAT TREATED
- STUD - BEARING STEEL, ZONE HARDENED
- NEEDLE ROLLER(S) - 440C STAINLESS STEEL, HEAT TREATED
- WASHER - BEARING STEEL, HEAT TREATED
- SEAL(S) - SYNTHETIC

CUSTOMER PART#

XX = ± .01
XXX = ± .005
XXXX = ± .0005
ANGLES = ± 1'
INCH [METRIC]
FRACTION = ± 1/32

CARTER MANUFACTURING IS NOT RESPONSIBLE FOR TYPOGRAPHICAL ERRORS

CARTER MANUFACTURING CO., INC.

GRAND HAVEN, MICHIGAN 49417

ENGINEERING CHANGE ORDER NOTE

REVISION

PART NAME: ASSEMBLY

PRODUCT TYPE: CNB, CHROME PLATED

B

AUTHOR BY
HG

DRAWN BY
SGW

CHK'D BY
SGW

SALES
KPR

MATERIAL
NOTED

REVISION BY

DATE

DATE

DATE

DATE

SHEET

MD

4/23/2014

12/2/2008

4/23/2014

12/2/2008

1 OF 2