



# ***CARTER***

BEARINGS ARE OUR BUSINESS



ESTD — 1959

Made In The U.S.A.

# CUSTOM Bearings

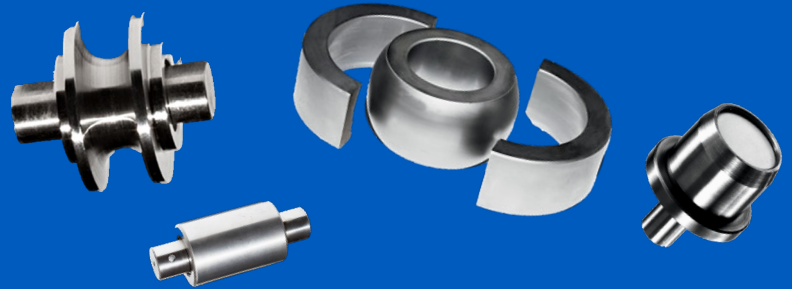


Made in the USA

Our team of experts is constantly pushing the boundaries of what's possible to deliver solutions that are both cutting-edge and effective.

- New Product Development Assistance.
- Modify Standard Bearings
  - ✓ Component Dimensions
  - ✓ Grease
  - ✓ Re-lube port options
  - ✓ Material
  - ✓ Finish
  - ✓ High/Low temperature

## INNOVATIVE Manufacturing Solutions



### ENGINEERING

CARTER'S engineers have a deep understanding of manufacturing processes and are constantly innovating to improve product quality and efficiency.

### QUALITY CONTROL

At CARTER Manufacturing, we take quality seriously. From the moment an order is placed to the final delivery, we ensure that every step of the manufacturing process meets our high standards.

### PRODUCTION

CARTER'S production team is made up of dedicated professionals who ensure that every product meets our high standards of excellence.



## CARTER'S Xtenda™ Standard Stainless Bearings

PREFIX	PRODUCT TYPE	DESCRIPTION	SUFFIX
SC	Stainless CF	Needle CF	- B = w/Hex - N = Narrow - S = Sealed - SB = with Hex & Sealed
CSC	Stainless CF	Needle CF, Crown	
SCE	Stainless CF	Needle CF, Eccentric	
CSCE	Stainless CF	Needle CF, Crown, Eccentric	
SCH	Stainless CF	Needle CF, HD	
CSCH	Stainless CF	Needle CF, Crown, HD	
SRT	Stainless CF	Needle CF, Urethan Outer	
SRTH	Stainless CF	Needle CF, Urethan Outer, HD	- S = Sealed
SY	Stainless YR	Needle YR	
CSY	Stainless YR	Needle YR, Crown	
SYRT	Stainless YR	Needle YR, Urethane Outer	

Standard Stainless sizes range from ½" to 4"

For stainless steel products between 5"-10" please contact CARTER Sales Department

#### INTERCHANGE CHART Stainless Steel

Standard	CARTER	McGill	Smith	RBC	Osborn	PCI	Koyo/Torrington
Regular Stud	SC	CF	CR				
Yoke Roller	SY	CYR	YR				

### Special Features

- ✓ Components are manufactured from 440C stainless steel.
- ✓ Dimensionally interchangeable with standard cam followers and yoke rollers.
- ✓ Bearings come standard with USDA (H1) and FDA approved food grade grease, other lubricants available upon request.

### NEW: Extreme Duty Stainless

XD15NW is an alternative stainless material. The high nitrogen content gives XD15NW a much greater corrosion resistance than standard 440C stainless, along with resistance to increased fatigue/wear in extreme conditions. Contact a member of the CARTER Sales Team to learn more.





### CAM FOLLOWERS

### YOKE ROLLERS

Carter's standard bearings are available as sealed bearings with a slotted head, a hexagonal socket, a heavy-duty stud, eccentric stud or a crowned outer race.

Chrome Plated Bearings comes standard with USDA(H1) and FDA approved food grade grease.

PREFIX	PRODUCT TYPE	DESCRIPTION	SUFFIX
CNB	Standard CF	Needle CF	-C = Chrome Plated -B = with Hex * -N = Narrow -S = Sealed -SB = with Hex & Sealed
CCNB	Standard CF	Needle CF, Crown	
CNBE	Standard CF	Needle CF, Eccentric	
CCNBE	Standard CF	Needle CF, Crown, Eccentric	
CNBH	Standard CF	Needle CF, HD	
CCNBH	Standard CF	Needle CF, Crown, HD	-S = Sealed -C = Chrome Plated
YNB	Standard YR	Needle YR	
CYNB	Standard YR	Needle YR, Crown	

CNB & YNB Series stock sizes range from 1/2" to 6". For CNB & YNB products between 6" - 10" please contact CARTER Sales Department

INTERCHANGE CHART CAM Followers (Needle Rollers) Inch Series							
Standard	CARTER	McGill	Smith	RBC	Osborn	PCI	Koyo/Torrington
Regular Stud	CNB	CF	CR	S	CF	SCF	CRS
Heavy Stud	CNBH	CFH	HR	H	CFH	HCF	CRH
Yoke Roller	YNB	CYR	YR	Y	CYR	YCF	YCR

PREFIX	PRODUCT TYPE	DESCRIPTION	SUFFIX
CDR	Heavy Duty Cylindrical CF	Double Row Needle CF	-C = Chrome Plated* -B = with Hex -N = Narrow -S = Sealed* -SR = with Hex & Sealed
YDR*	Heavy Duty Cylindrical YR	Double Row Needle YR	

INTERCHANGE CHART Cam Followers (Needle Rollers) Double Row							
Double Row Inch	CARTER	McGill	Smith	RBC	Osborn	PCI	Koyo/Torrington
Regular Stud	CDR	CFD	DCR	RBC			
Yoke Roller	YDR	YRD	DYR	RBY			



CDR\*

## Heavy Cylindrical

Heavy Cylindrical Roller Bearings are interchangeable with standard needle CAM follower designs. They also offer a longer L10 life than standard needle bearings.

\*Available yoke series YDR



CRT\*

## Polyurethane

Our comprehensive line of polycoated bearings can be used in applications where noise reduction, reduced track wear and non-marking are important factors.

\*Available yoke series YRT

PREFIX	PRODUCT TYPE	DESCRIPTION	SUFFIX
CRT	Standard Urethan CF	Needle CF, Urethan Outer	-S= Sealed* -SB with Hex & Sealed
CRTH	Standard Urethan CF	Needle CF, Urethan Outer	
YRT	Standard Urethan YR	Needle YR, Urethan Outer	

CRT & YRT Series stock sizes range from 3/4" to 3". For larger size please contact CARTER Sales Department.

INTERCHANGE CHART Urethane Coated							
Standard	CARTER	McGill	Smith	RBC	Osborn	PCI	Koyo/Torrington
Regular Stud	CRT		CR-U				
Yoke Roller	YRT		YR-U				

PREFIX	PRODUCT TYPE	DESCRIPTION	SUFFIX
SFH	Neverlube	Bronze Bushing CF	-A = Assembly
SFHE	Neverlube	Bronze Bushing CF, Eccentric	
NYR	Neverlube	Bronze Bushing YR	

SFH, SFHE & NYR Series stock sizes range from 1/2" to 4". For larger size please contact CARTER Sales Department.

INTERCHANGE CHART Neverlube™							
Standard	CARTER	McGill	Smith	RBC	Osborn	PCI	Koyo/Torrington
Regular Stud	SFH	BCF	BCR				
Yoke Roller	NYR	BCYR					

## NEVERLUBE



SFH\*

The Neverlube line is an economical sintered bushing design. Neverlube bearings offer many important benefits to engineers.

\*Available yoke series NYR

## HI - Rollers



Hi-Rollers are designed for applications where both radial and thrust loading are present. Available with deep groove ball bearings or tapered rollers, they come in v-groove, plain and flanged styles.

PREFIX	PRODUCT TYPE	DESCRIPTION	SUFFIX
PHR	Hi-Roller Idler Rollers	HR, Plain	
PHRE	Hi-Roller Idler Rollers	HR, Plain, Eccentric	
PHRY	Hi-Roller Idler Rollers	HYR, Plain	
PHR Series stock sizes 1"-8". For larger size please contact CARTER Sales Department.			
FHR	Hi-Roller Idler Rollers	HR, Flanged	-A = Assembly
FHRE	Hi-Roller Idler Rollers	HR, Flanged, Eccentric	
FHRY	Hi-Roller Idler Rollers	HYR, Flanged	
FHR Series stock sizes 1"-6". For larger size please contact CARTER Sales Department.			
VHR	Hi-Roller Idler Rollers	HR, V-Groove	
VHRE	Hi-Roller Idler Rollers	HR, V-Groove, Eccentric	
VHRY	Hi-Roller Idler Rollers	HYR, V-Groove	
VHR Series stock sizes 1 1/2"-6 1/2". For larger size please contact CARTER Sales Department.			

INTERCHANGE CHART HI-ROLLERS™ (Load Runner) Bearings							
Inch Stud-Type	CARTER	McGill	Smith	RBC	Osborn	PCI	Koyo/Torrington
Plain	PHR	PCF	PCR	PTR	PLR	PTR	
Flanged	FHR	FCF	FCR	FTR	FLR	FTR	
V-Groove	VHR	VCF	VCR	VTR	VLR	VTR	
Inch Yoke-Type	CARTER	McGill	Smith	RBC	Osborn	PCI	Koyo/Torrington
Plain	PHRY	PCYR	PYR	PTRY	PLRY	PTRY	
Flanged	FHRY	FCYR	FYR	FTRY	FLRY	FTRY	
V-Groove	VHRY	VCYR	VYR	VTRY	VLRY	VTRY	

Available in yoke style  
**PHRY, FHRY & VHRY**



On Board  
MARS 2020 ROVER

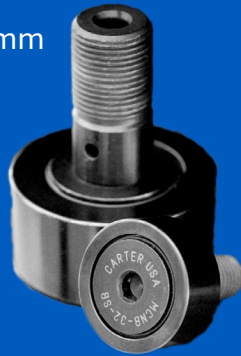
PERSEVERANCE

On Feb 18, 2021, NASA successfully landed the Perseverance rover (nick name Percy) on Mars. Specifically, our bearings help assist Percy's robotic arm which is used mainly for analyzing the terrain and taking samples. *CARTER* is very proud to be part of this historic event!

## MCNB Metric CAM Follower Series

All metrics have a standard, 500mm crown on the outer race. Other variations available are:

- ✓ An eccentric sleeve
- ✓ Cylindrical outer races
- ✓ Yoke Rollers: Available upon request (custom quote)



### Stocked sizes:

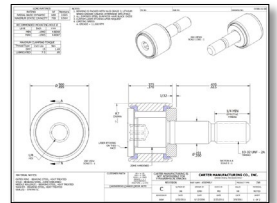
16mm 19mm 22mm 26mm 30mm 32mm  
35mm 40mm 47mm 52mm 62mm 72mm

## ONLINE RESOURCES



*CARTER Bearings website contains useful information!*

- ✓ Product Specifications like dimensional information and load ratings.
- ✓ Installation & Best Practices.
- ✓ Cross Reference Search.
- ✓ 3D Model downloads.
- ✓ PDF part drawing downloads.
- ✓ CARTER literature.
- ✓ ISO Certification Certificate.



## ALL LOCATED AT THE SAME FACILITY



Manufacturing Plant  
Product Inventory  
Quality Control  
Engineering Team  
Sales & Marketing Team  
Customer Service

## LASER ETCHING on any product for no additional cost



[carterbearings.com](http://carterbearings.com)

CARTER Manufacturing  
1725 Airpark Dr.  
Grand Haven, MI 49417

**SALES: 616.842.8760**

[sales@carterbearings.com](mailto:sales@carterbearings.com)



**Made in the USA**