



CARTER



Manufacturing
Grand Haven, Michigan

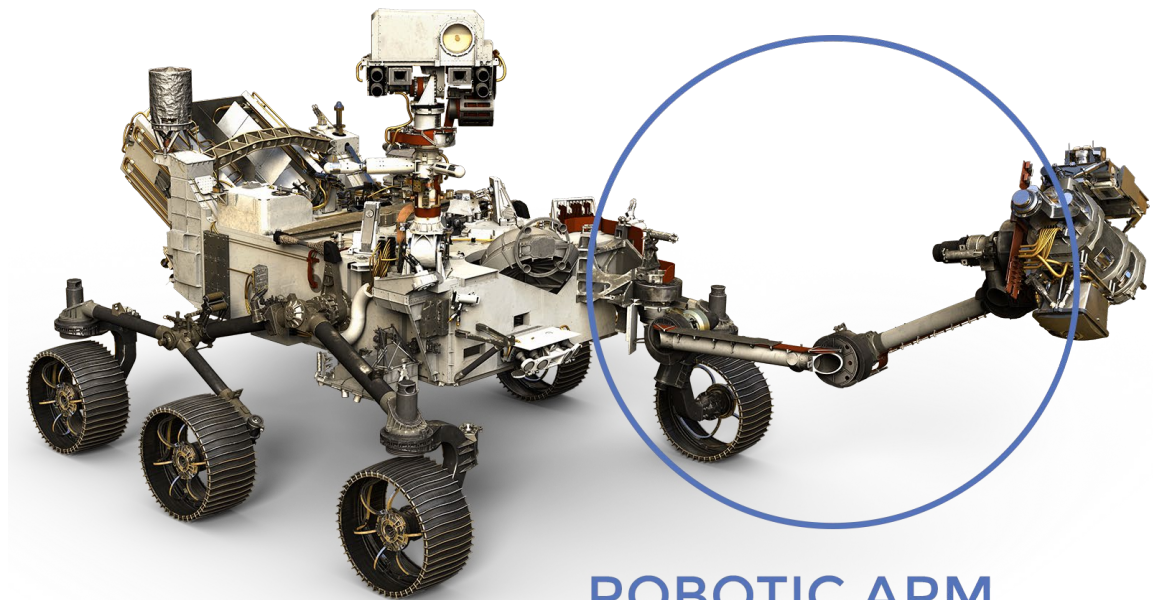
Bearings Are Our Business



CARTER Bearings are On Board!

On Feb 18, 2021, NASA successfully landed the Perseverance rover (nick name Percy) on Mars. Specifically, our bearings help assist Percy's robotic arm which is used mainly for analyzing the terrain and taking samples.

We at CARTER are proud to be part of this historic event. CARTER has been manufacturing exceptional quality custom bearings for over 50 years and it is no surprise to all of us here in Grand Haven that we are part of this remarkable mission.



ROBOTIC ARM



ALL LOCATED AT
THE SAME
FACILITY

Manufacturing Plant

Inventory

Quality control

Engineering Team

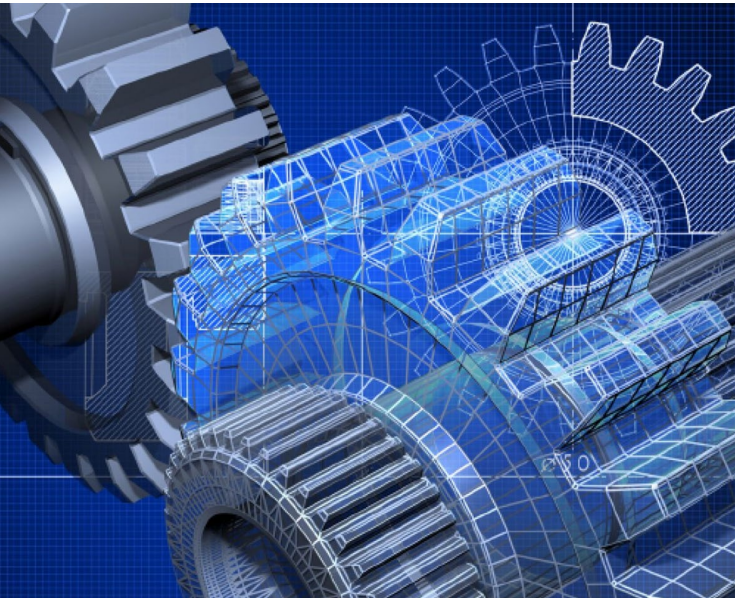
Sales & Marketing Team

Customer Service



ENGINEERING

CARTER'S engineers have a deep understanding of manufacturing processes and are constantly innovating to improve product quality and efficiency.



QUALITY CONTROL

At CARTER Manufacturing, we take quality seriously. From the moment an order is placed to the final delivery, we ensure that every step of the manufacturing process meets our high standards.



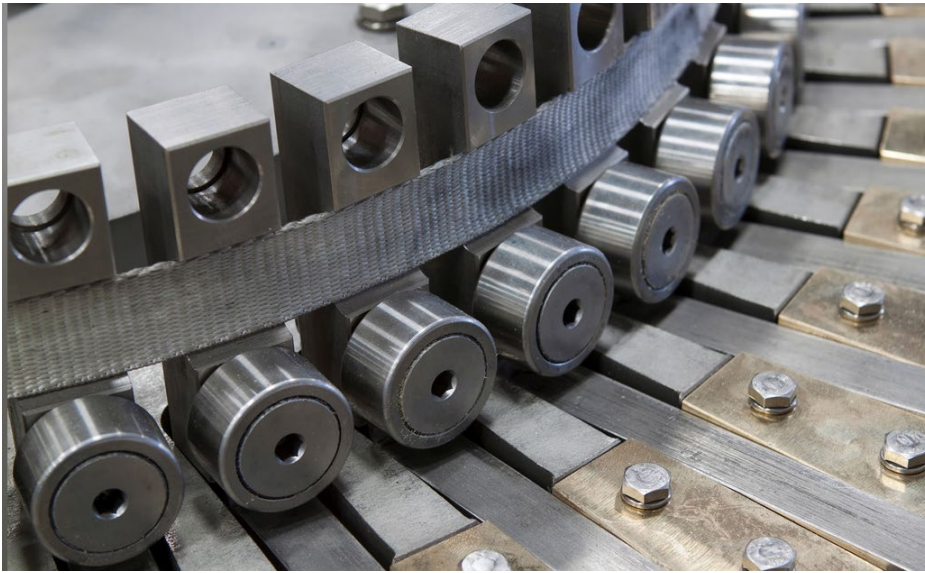
PRODUCTION

CARTER'S production team is made up of dedicated professionals who ensure that every product meets our high standards of excellence.



**Products Manufactured at Carter Manufacturing Co., Inc.
ISO 9001:2015 QMS Certified by Intertek.**

What does a cam follower do?



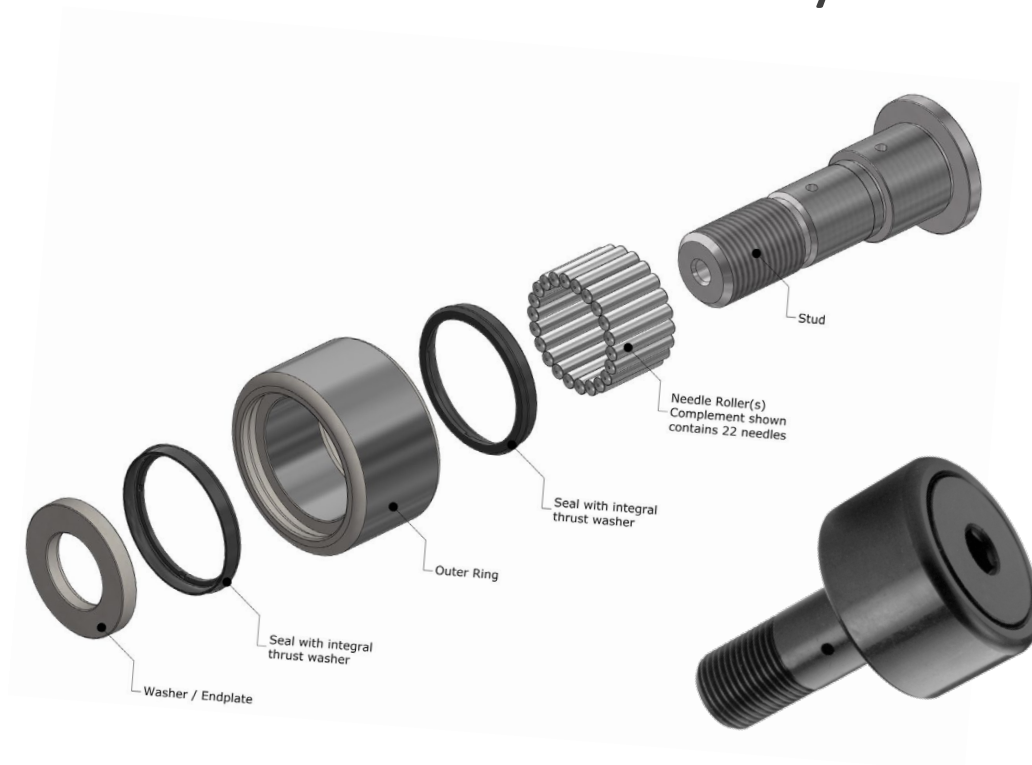
- Converts rotary motion to linear motion.
- Used for heavy radial load applications where shock loads may be present. *This bearing design can not handle medium to high thrust loads.*
- Reduces sliding friction and wear on a cam or a track to maintain precise load handling.

What does a cam follower do?



- Cam followers are power-transmission devices with a rotary bearing core that bears load while serving as the interface between independently moving machine sections.
- Cam followers also find use in assemblies that pair them with linear tracks and other engineered paths on customized assemblies.
- The outer diameter (OD) of the cam-follower bearing assembly is its working face — typically made of steel, nylon, urethane, polyamide, or other engineered material.

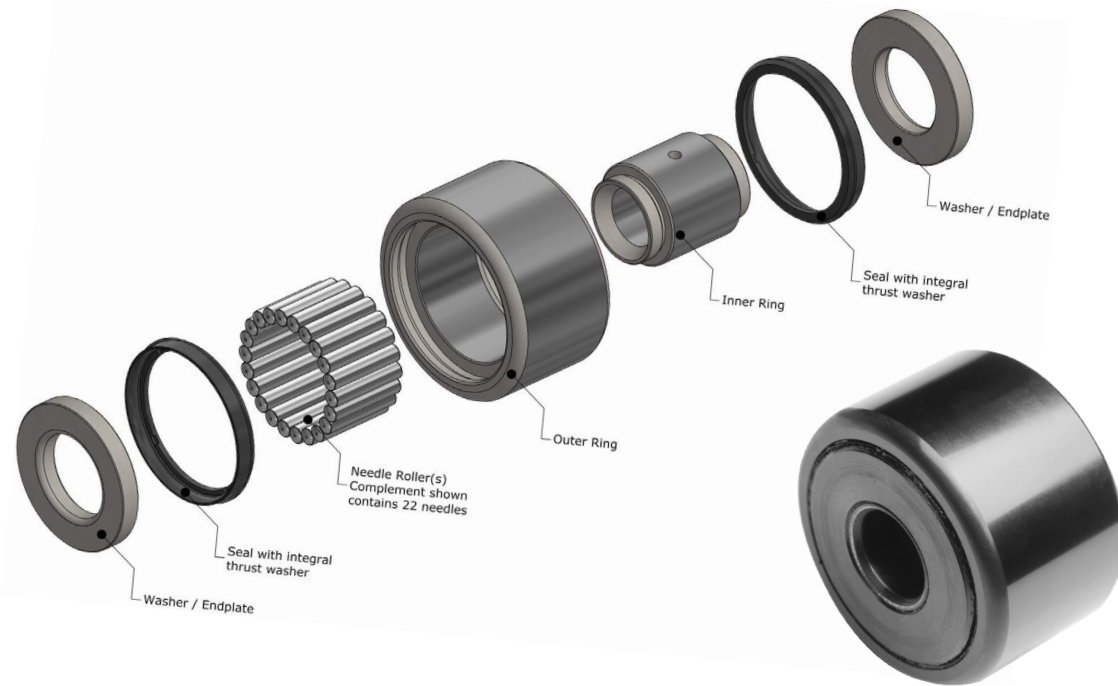
Cam followers assemble onto machines in one of two ways.



Stud-type cam followers include a partially threaded shaft fixed to the follower inner diameter (ID) for assembly onto a machine frame with a nut or similar fastening device.

stud cam followers are indispensable in an array of applications — including those that are subject to high loads.

Cam followers assemble onto machines in one of two ways.



Yoke cam-follower variations (identifiable by their open ID) often mate to machine frames via press fit at a hardened inner race usually held by the follower's end plates.

Because they're not a cantilevered design, yoke followers exhibit minimal deflection.

CARTER Product Line

- ✓ Standard Size Cam Followers and Yoke Rollers
- ✓ Metric – Same features a Standard Cam (16mm-72mm) and limited yoke followers
- ✓ Xtenda™ Stainless Steel Cam Followers and Yoke Rollers
- ✓ Chrome Plate Bearings
- ✓ Hi-Roller™ Idlers
- ✓ Polyurethane Coated Bearings
- ✓ Neverlube™ Cam and Yoke Rollers
- ✓ Xtreme™ Duty Stainless
- ✓ Heavy Cylindrical Roller Bearings



Applications for Standard Cam and Yoke Followers

- Track Followers – Material Handling
- Rotary Index Tables
- Turntable Conveyors
- Robotic Transfer Units – RTU's
- Fuel Pumps
- Hydraulic Systems
- Printing Machines
- Textile Machinery – stitching
- Automatic Lathes
- Transmissions
- Gear Cutting Machines
- Machine Feed Mechanisms
- Palletizers
- Baggage Handling
- Truck Bed Slides





Xtenda™ Stainless Steel

- 440C stainless steel
- Seal Tight design minimizes contamination
- Reduces machine shutdowns
- FDA approved rating for seals and food grade lubricants
- Precision manufactured for accuracy and bearing life
- Corrosion resistant requirements
- Standard and custom sizes

Applications



Food and Beverage

Bakery Proofer Ovens

Food Stackers

Can Seaming

Automatic Lubrication Machines

Can and bottle conveying

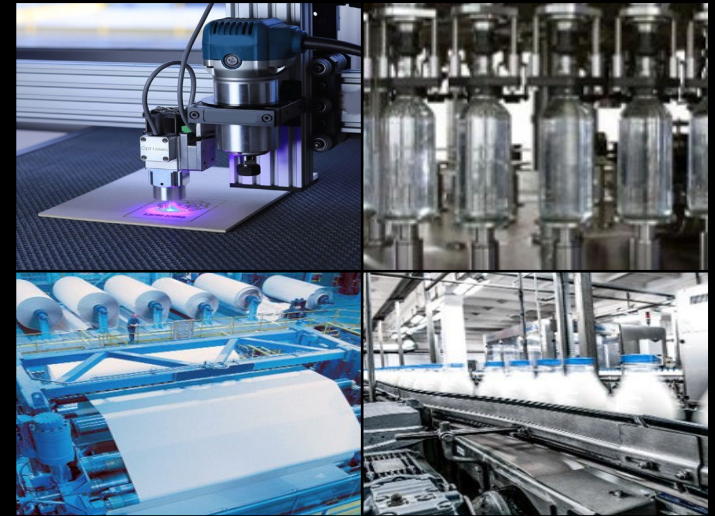
Pharmaceutical automation

Chrome Plated Cam Follower & Yoke Roller Bearings



- Manufactured from standard bearing steel – SBC
- Thin dense chrome plated with stainless steel rollers
- Higher corrosion protection than standard cam followers at a reasonable price
- Improves wear rating of bearing and maintains higher load rating than a 440C stainless steel bearing

Applications



Heavy load food conveying

Machine Tools

Pulp and Paper

Etching machines

Automatic Lubrication Machines

Dairy Machinery

Bottle Filling Machines

Soda Production Machines

Hi-Roller™- Track Roller Bearings



- Designed to handle both radial and thrust loading
- Deep Groove ball bearings (higher speeds) or tapered roller bearings (heavier loads)
- Available in stud & yoke configurations
- Plain, Flanged & V-Groove outer roller housing configurations.
- Standard configuration is tightly sealed for high dust and high moisture environments.

Applications



Heavy Load Industrial Conveying

Foundry material process and conveying

Lumber Conveying and Load Transfer

Mining Conveyors

Warehouse AS/RS Systems

Overhead Crane Conveyors

Beam type roller applications

Polyurethane Coated Bearings



- Reduces noise
- Reduces track wear
- Non-marking on track guides
- Improves load traction
- Food grade polyurethane available on stainless steel bearings
- Available in both cam and yoke follower configurations
- Prevents electrical grounding through roller contact.

Applications



Elevators

Medical Equipment

Conveyor Systems

Bakery Proofer Ovens

Clean-Room Applications

Robotics

Pin Insertion Machine

Applications

Neverlube™ Cam Followers



- Available in both stud & yoke configurations
- Sintered Bronze bushing design serves as lubricant reservoir
- Resist shock & impact, wear & corrosion
- Continuous self-lubrication
- Reduces maintenance and lowers cost
- Clean lubrication and self restoration
- Interchangeable with standard needle bearings



Food Processing Machinery

Farm Machinery

Construction Machinery

Machine Tools

Metalworking Machines

Packaging Machines

Pin Insertion Machine

Heavy Cylindrical Roller Bearings



- Heavy Cylindrical Roller Bearings have VB type lip seals that offer a better seal than a standard needle bearing CAM follower, preventing debris from entering the interior of the bearing.
- Heavy Cylindrical Roller Bearings are designed to keep the grease in until re-lube pressure is applied.
- Heavy Cylindrical Roller Bearings offer speeds that are more than double single row needle bearings.

Applications



Heavy Construction

Mining

Bulk Handling

Top Drives Oil/Gas

Lumber

Robotics and Automation

Special/Custom Bearings

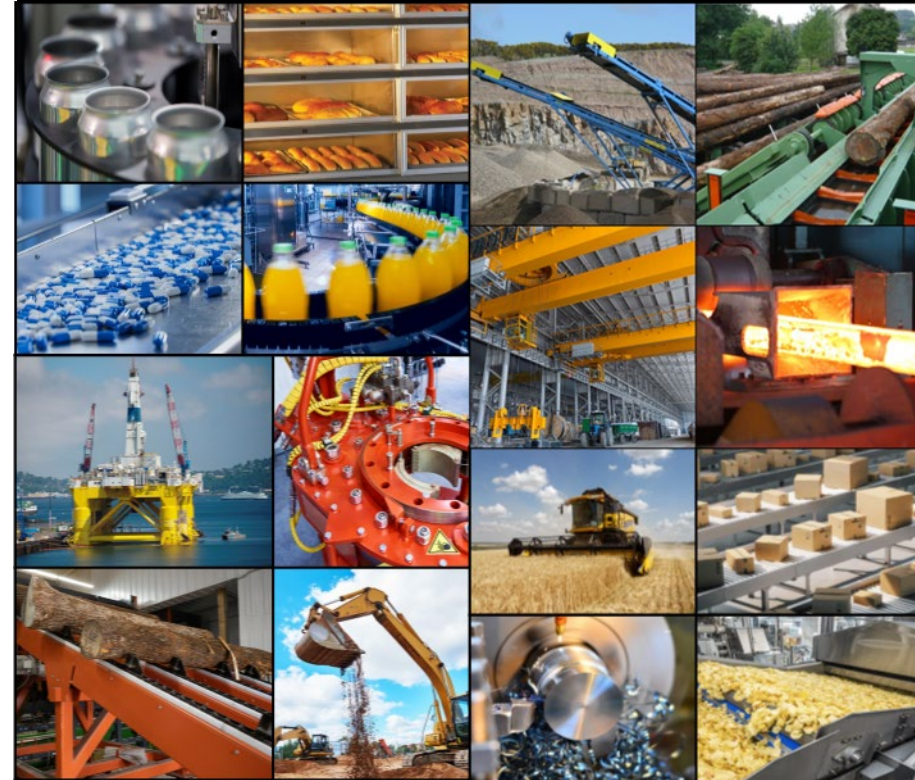


INNOVATIVE

Manufacturing Solutions

- At CARTER, we pride ourselves on our ability to provide innovative manufacturing solutions that meet the needs of our clients.
- Our team of experts is constantly pushing the boundaries of what's possible in order to deliver solutions that are both cutting-edge and effective.
- Whether you need custom bearings, seals, or other components, we have the knowledge and resources to create the perfect solution for your needs.

Applications



Applications that generally use standard bearings also benefit from using a custom or modified bearing.

CARTER *Manufacturing*

Your Solution for discontinued and obsolete bearings.

Over time bearing manufactures phase out some of their bearing lines. At Carter we can be your next supplier of bearings that are still needed in your industry, but no longer available through your previous supplier.

Ask your CARTER Sales Rep for details on what CARTER needs in order to create a competitors discontinued or obsolete part.



LASER ETCHING

*on any product for no
additional cost*

CARTER
Manufacturing



Partnering with
CARTER

Partnering with CARTER Manufacturing can provide numerous benefits for your business. CARTER understands that every customer has unique manufacturing goals, utilize our expertise and resources to streamline your manufacturing processes and improve your bottom line!